

A vibrant beach scene with many people sunbathing and swimming. In the foreground, a person is sitting on a pink towel on the pebbly beach. To the right, a wooden boat is partially visible. The background shows a clear blue sky and the sea.

# MB4 Production in Torino

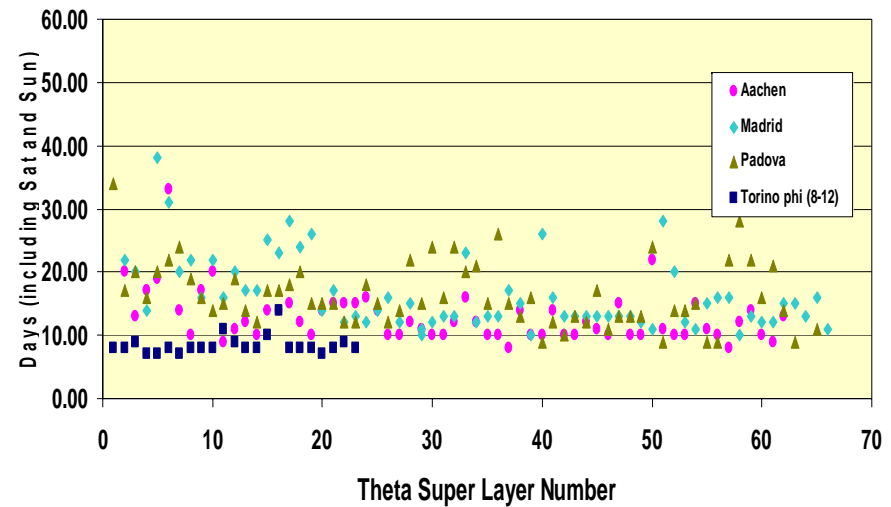
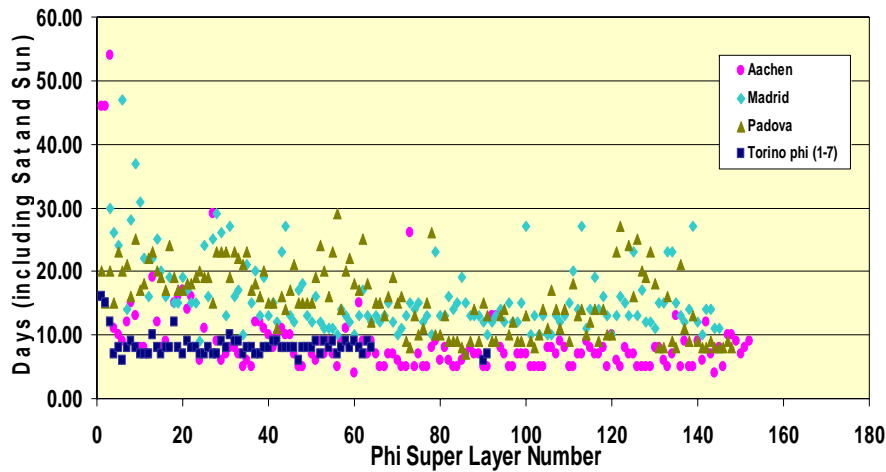
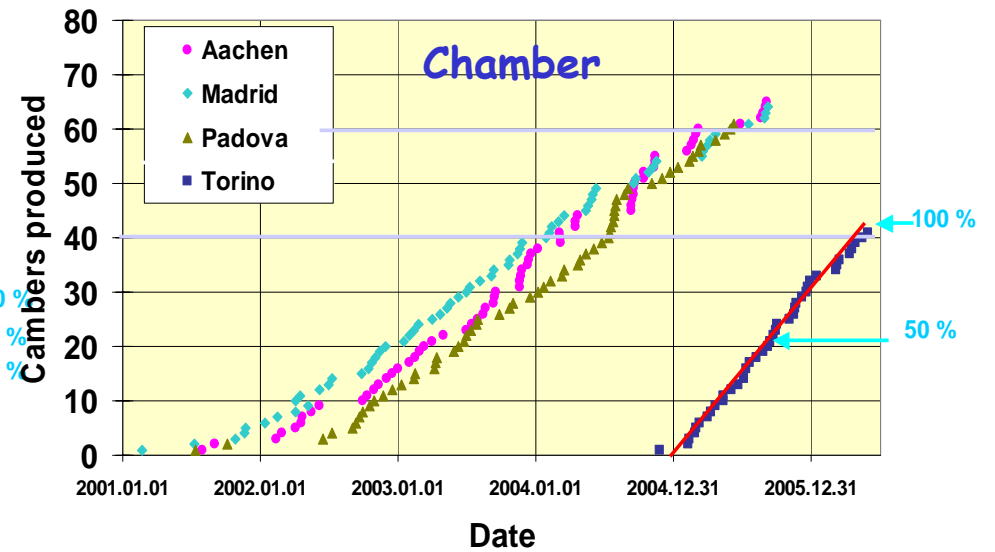
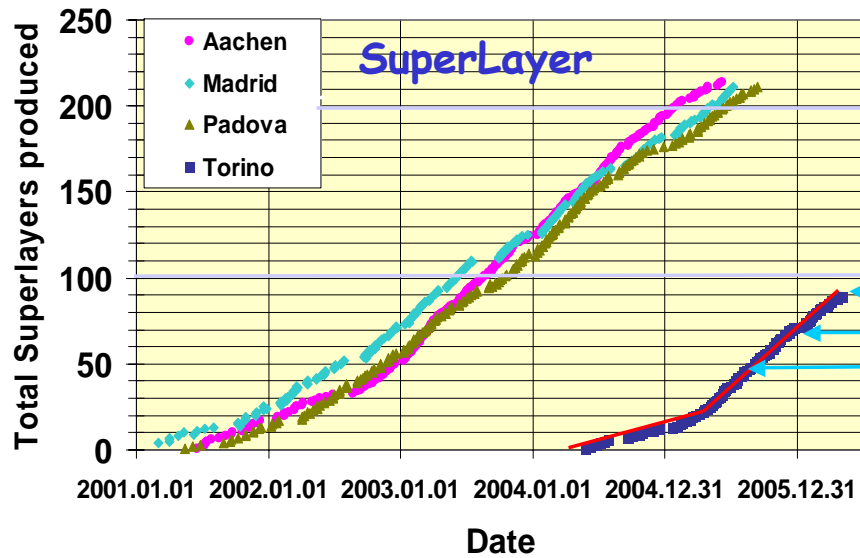
## Final Report

# Milestones

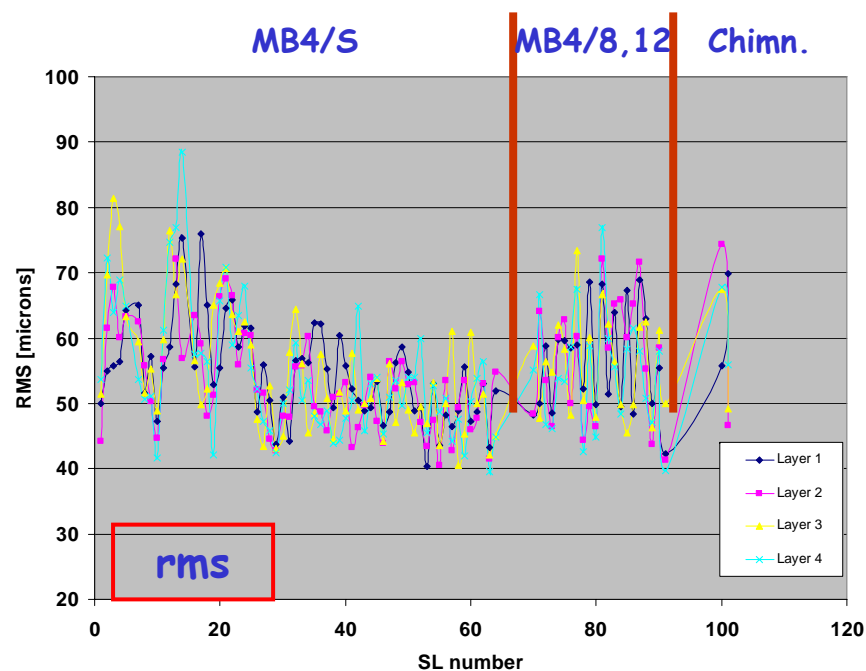
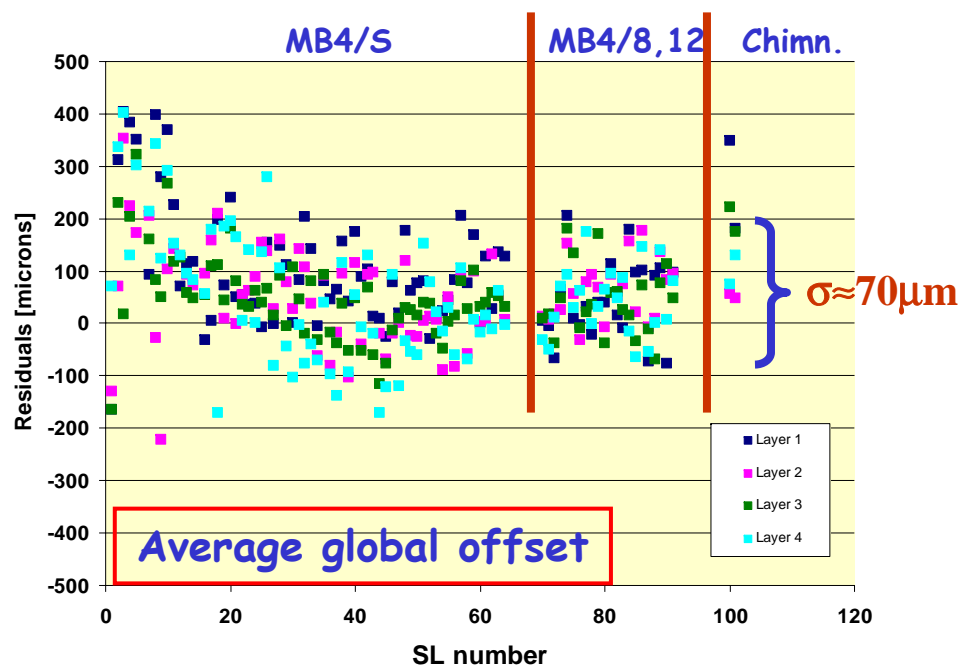
Summer 2002	Al plate production line moved to Dubna
4-May-2004	1 <sup>st</sup> MB4/s layer on table 1
9-Dec-2004	1 <sup>st</sup> MB4/8,12 layer
4-Feb-2005	1 <sup>st</sup> chamber
15-Feb-2005	1 <sup>st</sup> delivery of chambers at CERN
2-May-2005	Start SL assembly on 2 <sup>nd</sup> table
12-June-2006	Last chamber
15-June-2006	Last delivery of chambers at CERN

Production in Torino:	29 MB4/s + 2 spare
	10 MB4/8,12 + 1 spare
	1 MB4/Chimney
<b>Total:</b>	<b>43 chambers done !</b>

# Rate production plots

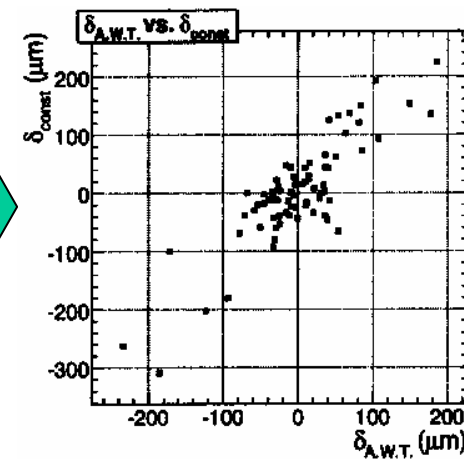
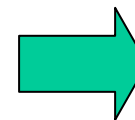


# Wire positions

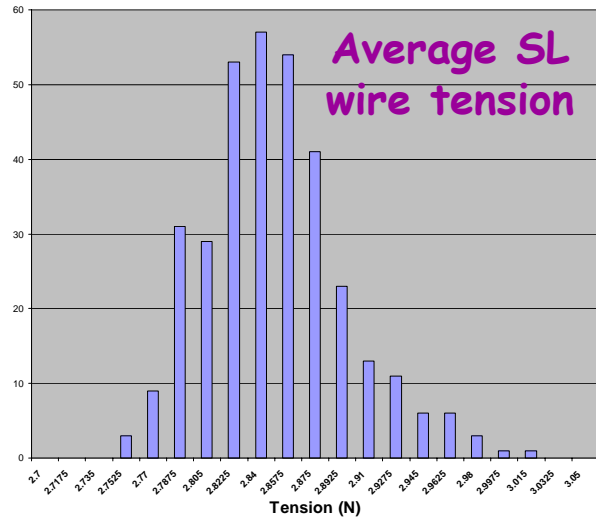


## CCD measurements validated by track alignment

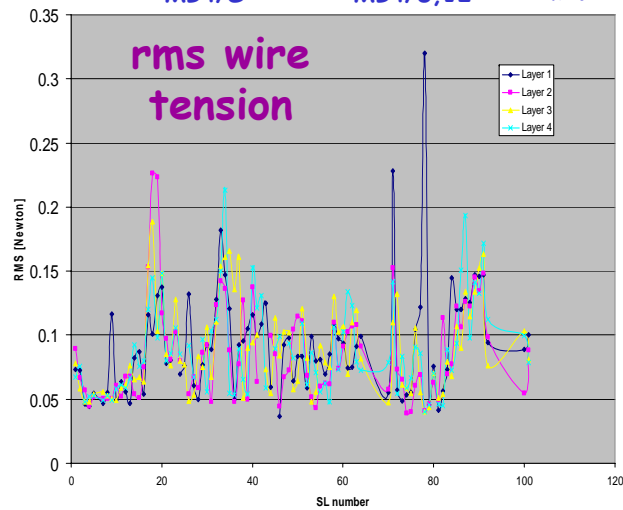
(prel. results from F.Matorras and P Martinez using 9 MB4 installed chambers)



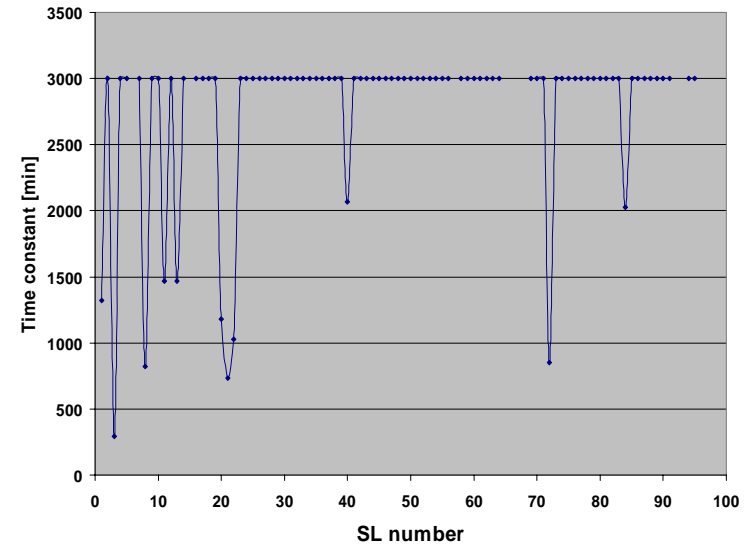
## Wire tension



MB4/S MB4/8,12 Chimn.



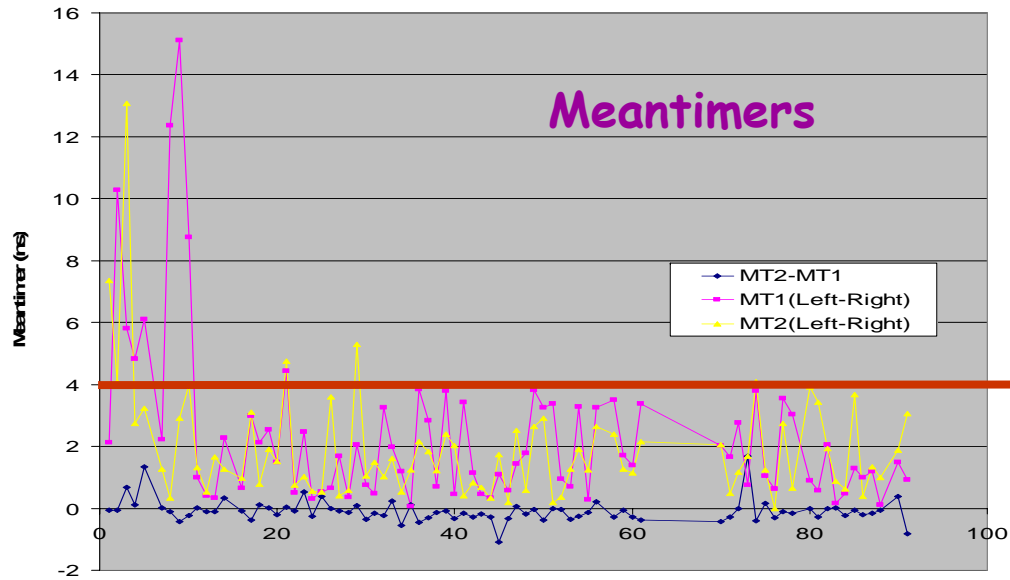
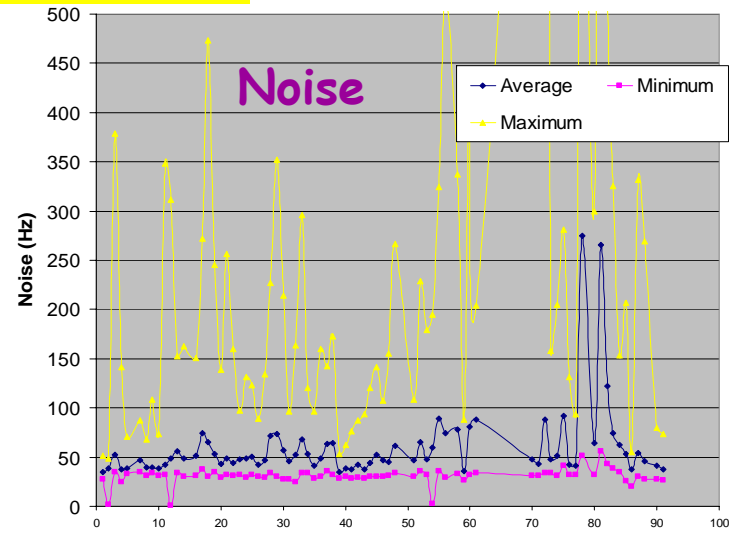
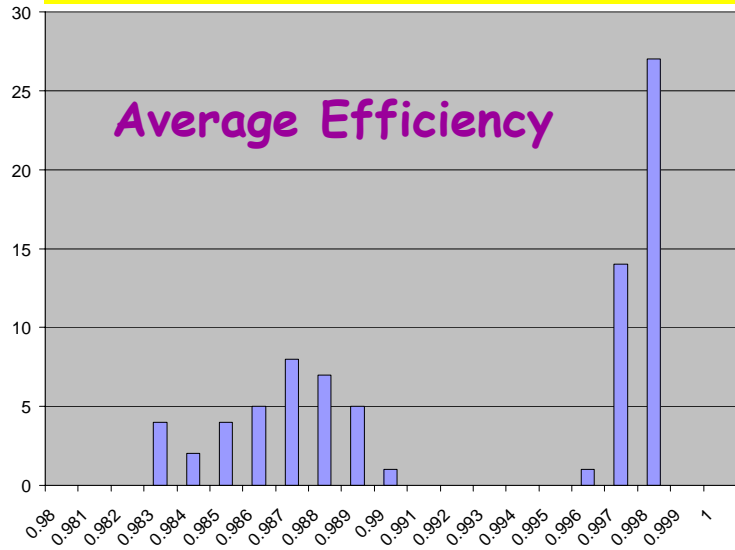
## Gas tightness



**Note:** total number of disconnected cells = **13** !  
out of 31900 cells

→ 0,04%

# SL Performance: a quick look



MT (Left-Right) < 4ns

# Conclusions

- Finished !!!!
- No major problems during production  $\Rightarrow$  able to meet deadlines
- Mechanical construction within design tolerances
- First look ad data  $\Rightarrow$  performance meets design goals
- Party already made (see below)

