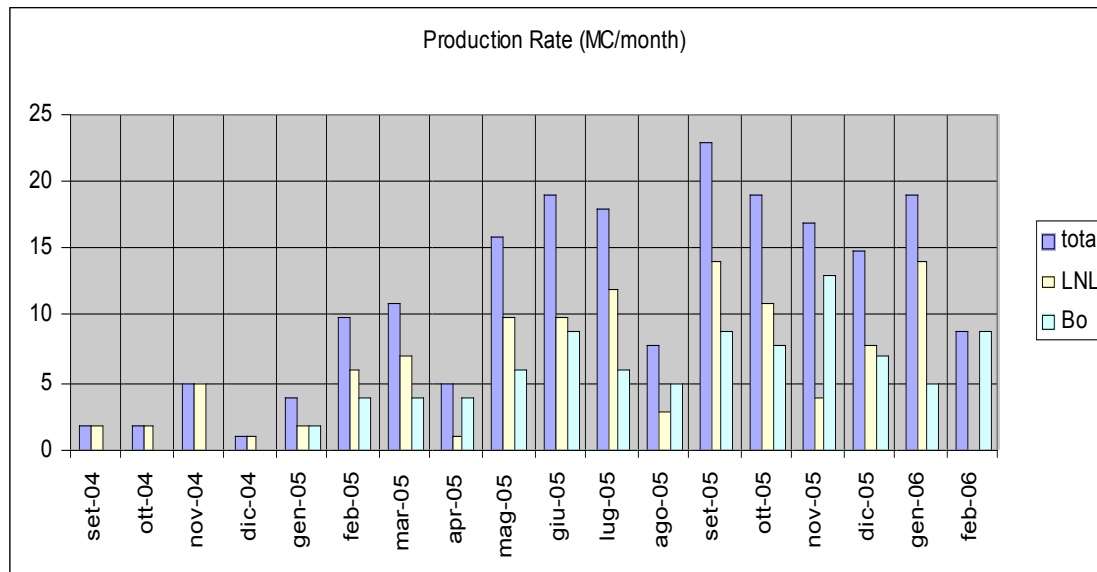
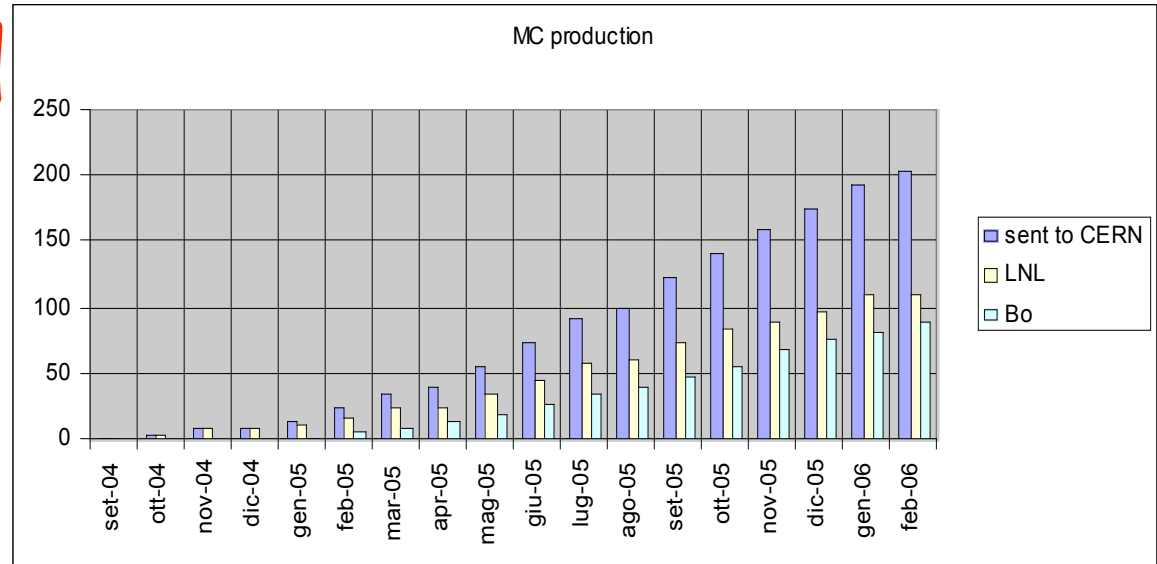


MiniCrates Status

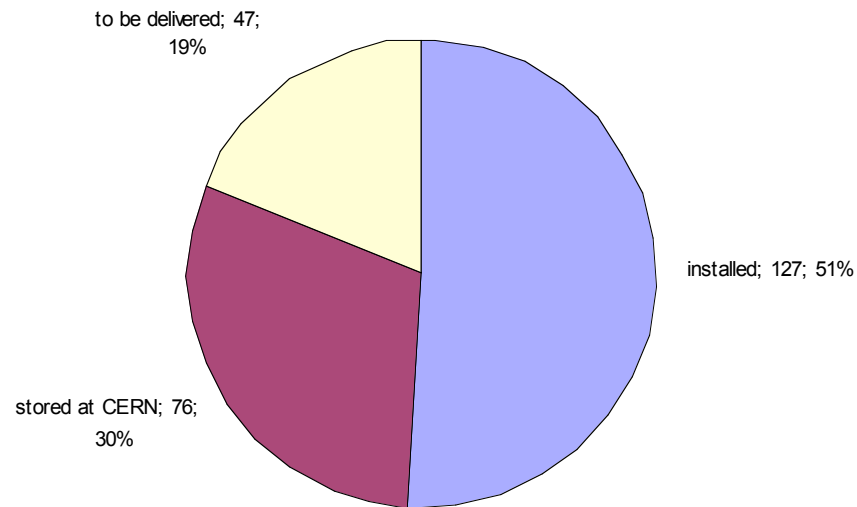
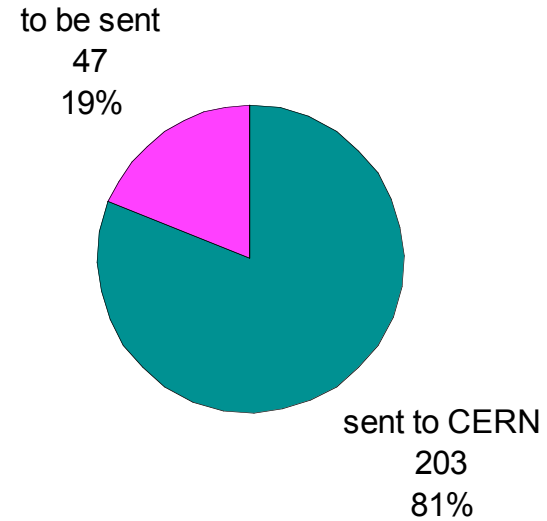
- MC production.
- Components Status (TRB).
- Production Schedule.

MC produced & Production Rate



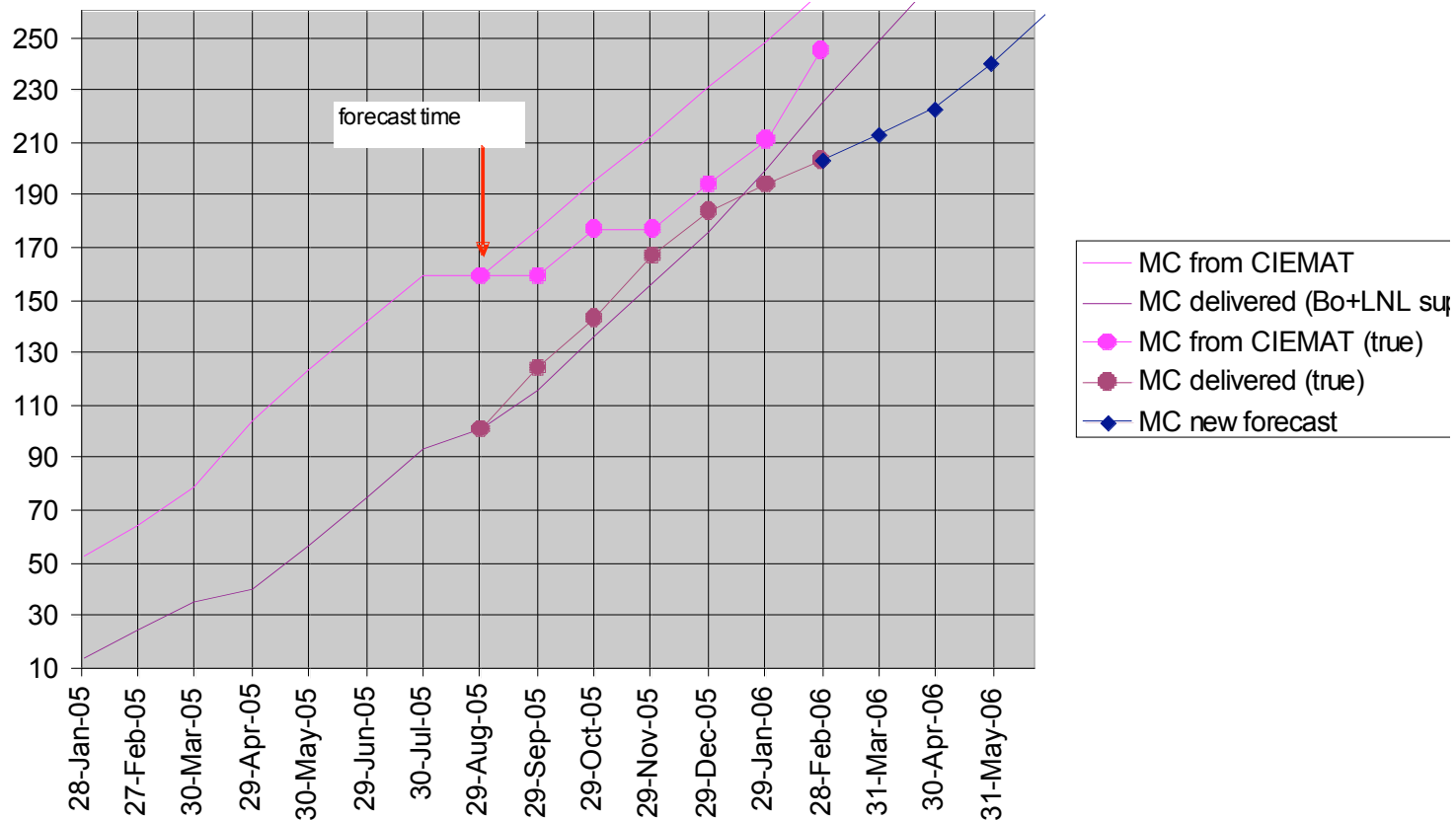
- 203 MC delivered
 - 112 by Legnaro
 - 91 by Bologna
- 47 to be delivered

MC produced



- 203 MC delivered
 - 127 installed
 - 76 at CERN waiting for installation
- 47 to be delivered.

production forecast

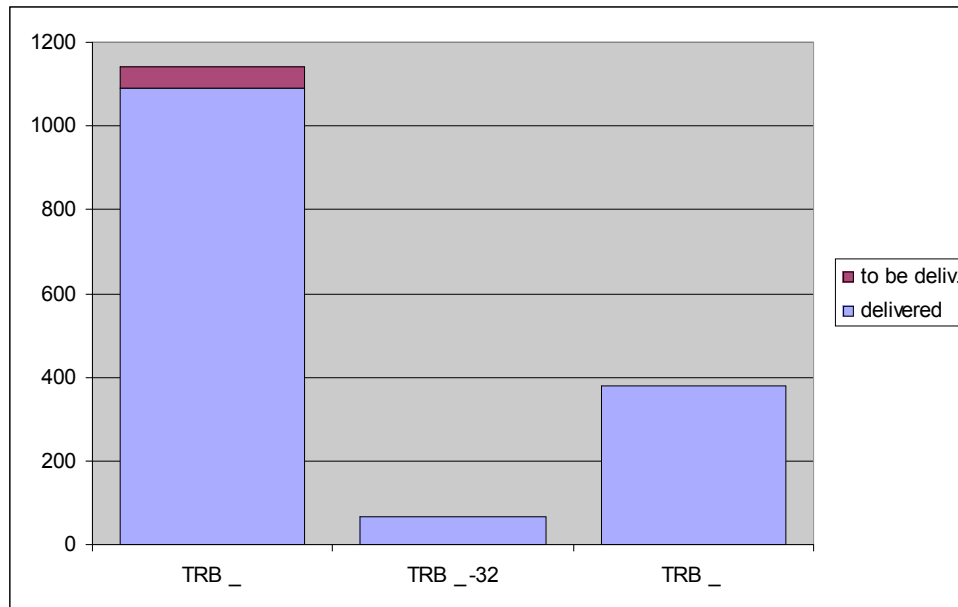
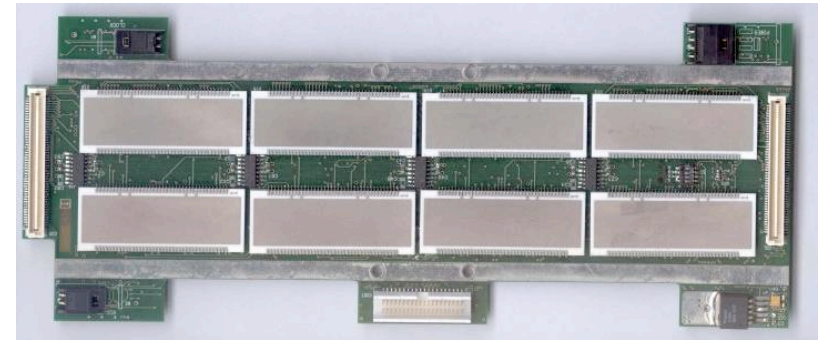


- Significant delay on the MC delivery plan; due to:
 - TRB shortage (the production queue collects all the faulty devices)
 - Some cables and small components shortage.
- Normal production rate foreseen within 40 - 60 days.

TRB

Production finished:

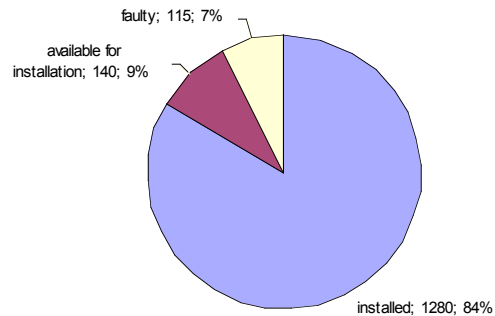
- TRB ϕ : 1091/1140 delivered/ordered
- TRB ϕ 32: 65/65
- TRB θ : 379/380



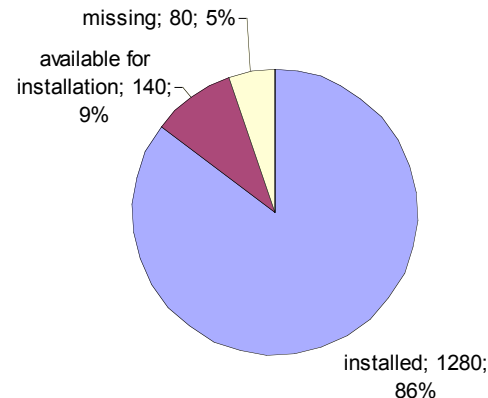
- 50 boards not delivered for unrecoverable faults
- An extra production of 55 TRB ϕ + 5 TRB θ is in progress. It needs a couple of months.

TRB statistics

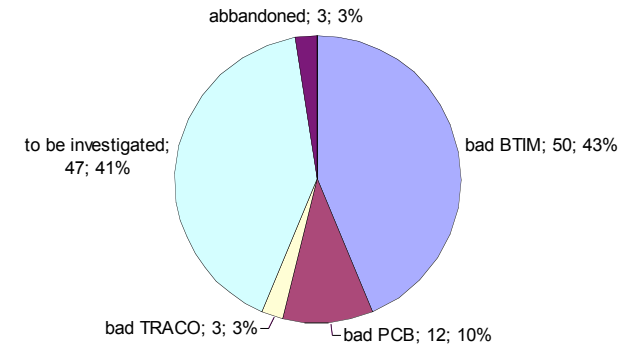
TRB delivered (1535)



TRB required (1500)



Bad TRB (115)



- 115 bad boards / 1535 delivered (7%).
- 80 of them are required to complete the nominal production (250 MC)
- Analysis and faults fixing proceeds slowly (few boards/day) and with low confidence: recovery rate about 70-80%
- Probably, but not surely, we will recover enough boards for the nominal production: the new 60 TRB will be used for spare MC.

Conclusions

- We should be able to have enough TRB for the nominal production.
- The amount of spare TRB will be very limited ($\leq 5\%$ limited by BTIM shortage).
- The minicrate production will continue at low speed for 40 - 60 days (~ 10 mc/month), due to TRB and cables shortage.
- The end of production is now foreseen at the mid of June.