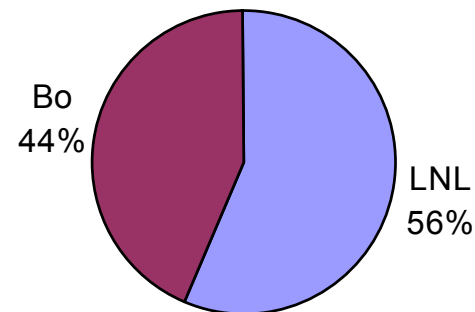
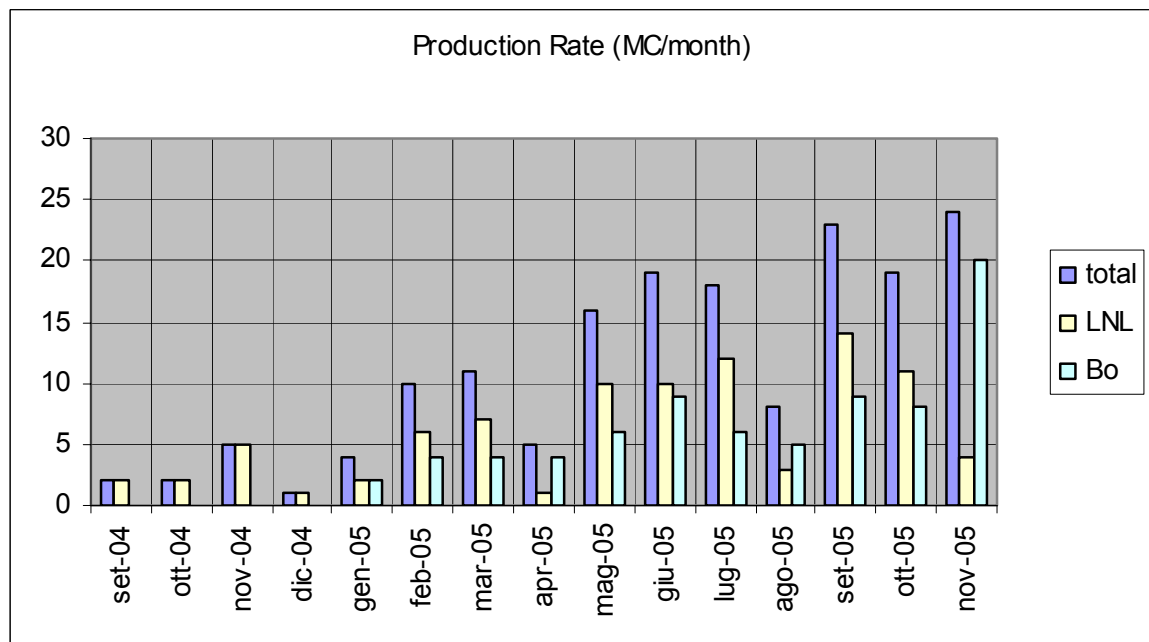
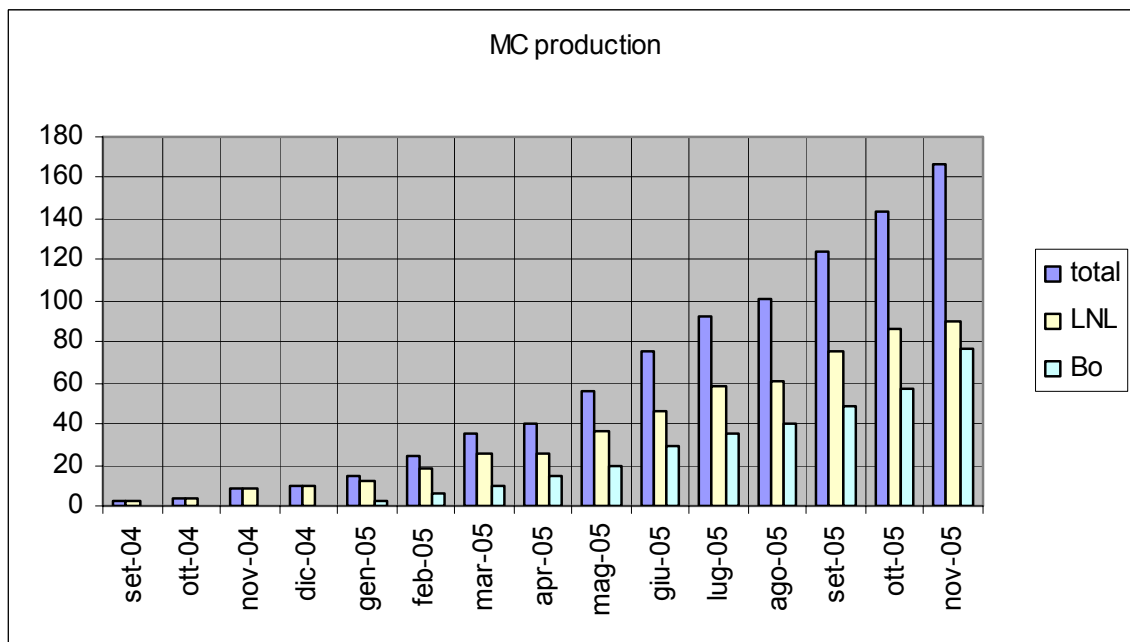


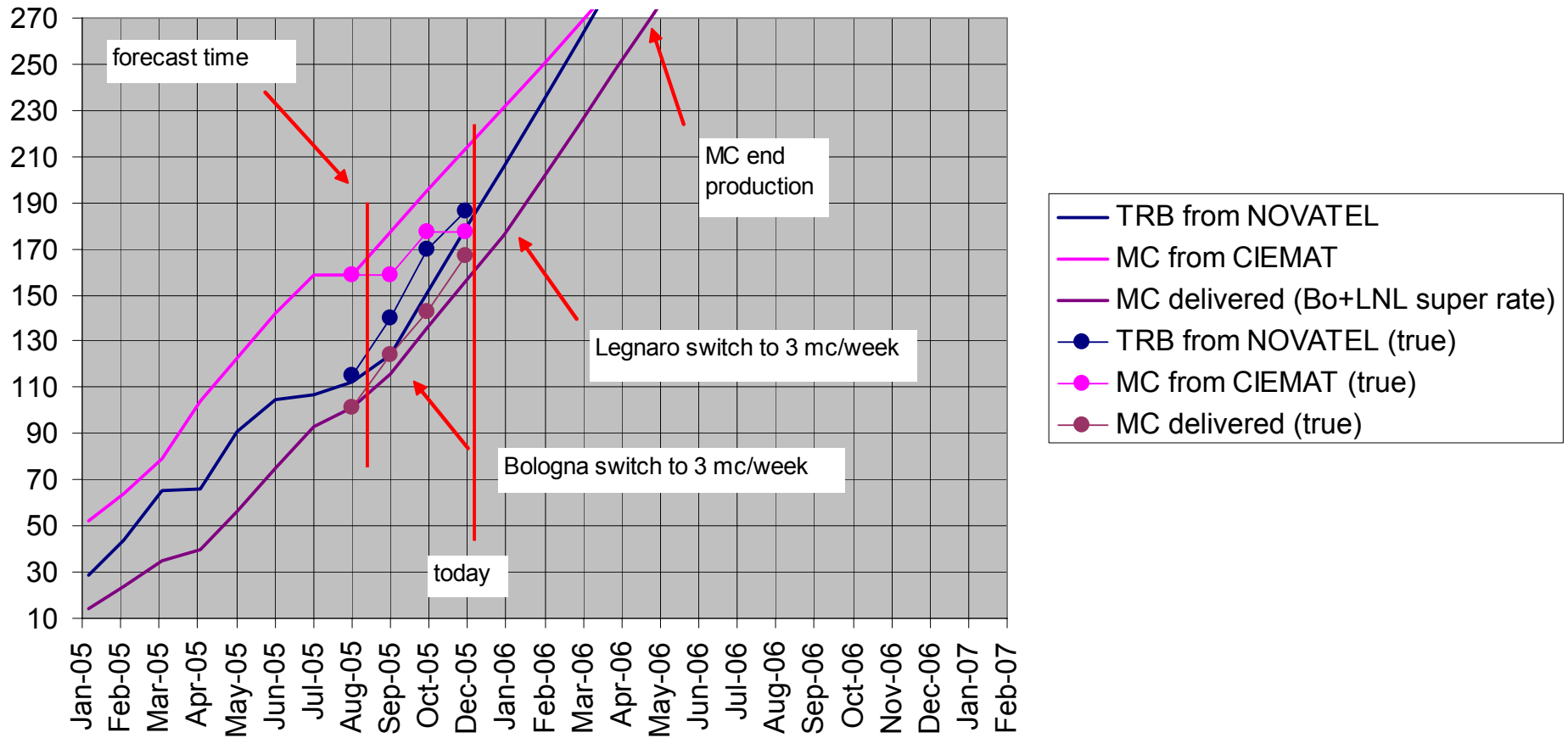
# MC produced & Production Rate



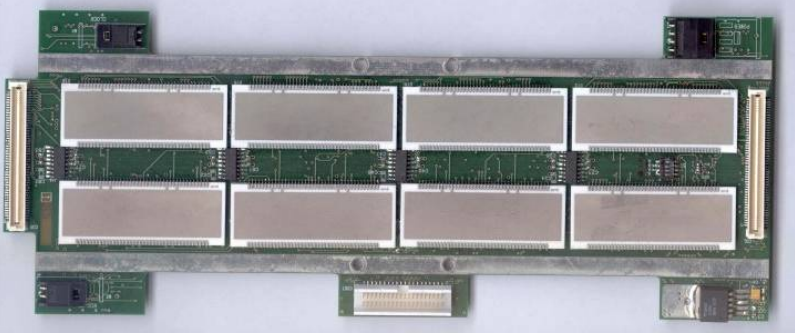
# MC installation priority

w+2	s1	s2	s3	s4	s5	s6	s7	s8	s9	s10	s11	s12				done at 30/11	
MB1		set-04	nov-04	feb-05	feb-05	nov-04	nov-05	ott-04	feb-05	feb-05	feb-05	nov-04	priority	installed		80	
MB2	ott-05	nov-04	feb-05	feb-05	dic-04	ott-04	ott-05	feb-05	feb-05	feb-05	feb-05	mar-05	10	November 05		20	100%
MB3	nov-05	set-04	mar-05	feb-05	mar-05	nov-04		mar-05	mar-05	mar-05	mar-05	mar-05	20	December 05		11	100%
MB4	ott-05	mag-05	mag-05	gen-05	mag-05	giu-05	nov-05	giu-05	giu-05	mar-05	giu-05	giu-05	30	January 06		14	100%
				gen-05						mar-05			40			9	69%
													50			9	100%
w+1	s1	s2	s3	s4	s5	s6	s7	s8	s9	s10	s11	s12	60			8	80%
MB1	nov-05	mag-05	mag-05	mag-05	mag-05	mag-05	nov-05	giu-05	giu-05	giu-05	giu-05	giu-05	70			4	40%
MB2	ott-05	mag-05	mag-05	mag-05	mag-05	giu-05		apr-05	apr-05	apr-05	apr-05	mag-05	80			1	10%
MB3		apr-05	mag-05	mag-05	mag-05	giu-05		giu-05	giu-05	giu-05	giu-05	giu-05	90			3	13%
MB4	ott-05	lug-05	lug-05	lug-05	lug-05	lug-05		lug-05		ago-05		lug-05	100			0	0%
				lug-05						ago-05			110			1	10%
													120			0	0%
w0	s1	s2	s3	s4	s5	s6	s7	s8	s9	s10	s11	s12				160	64%
MB1	nov-05	set-05	set-05	ott-05	nov-05	ott-05		lug-05	ago-05	giu-05	lug-05	ago-05		date=delivery to CERN			
MB2		set-05	set-05	nov-05	nov-05	set-05		lug-05	ago-05	giu-05	lug-05	set-05					
MB3		set-05	set-05	nov-05	nov-05	mar-05		lug-05	set-05	lug-05	lug-05	set-05					
MB4		ott-05	set-05	set-05	ott-05	ott-05		lug-05		lug-05		ott-05					
				ott-05						lug-05							
w-1	s1	s2	s3	s4	s5	s6	s7	s8	s9	s10	s11	s12					
MB1		nov-05		nov-05	nov-05					ago-05	ago-05						
MB2								set-05	set-05	set-05	set-05	ott-05					
MB3								set-05	set-05	set-05	set-05	ott-05					
MB4									ott-05	set-05							
										ago-05							
w-2	s1	s2	s3	s4	s5	s6	s7	s8	s9	s10	s11	s12					
MB1										set-05	set-05						
MB2										nov-05	nov-05						
MB3										ott-05	ott-05						
MB4			nov-05							ott-05							
										ott-05							

# production vs forecasting



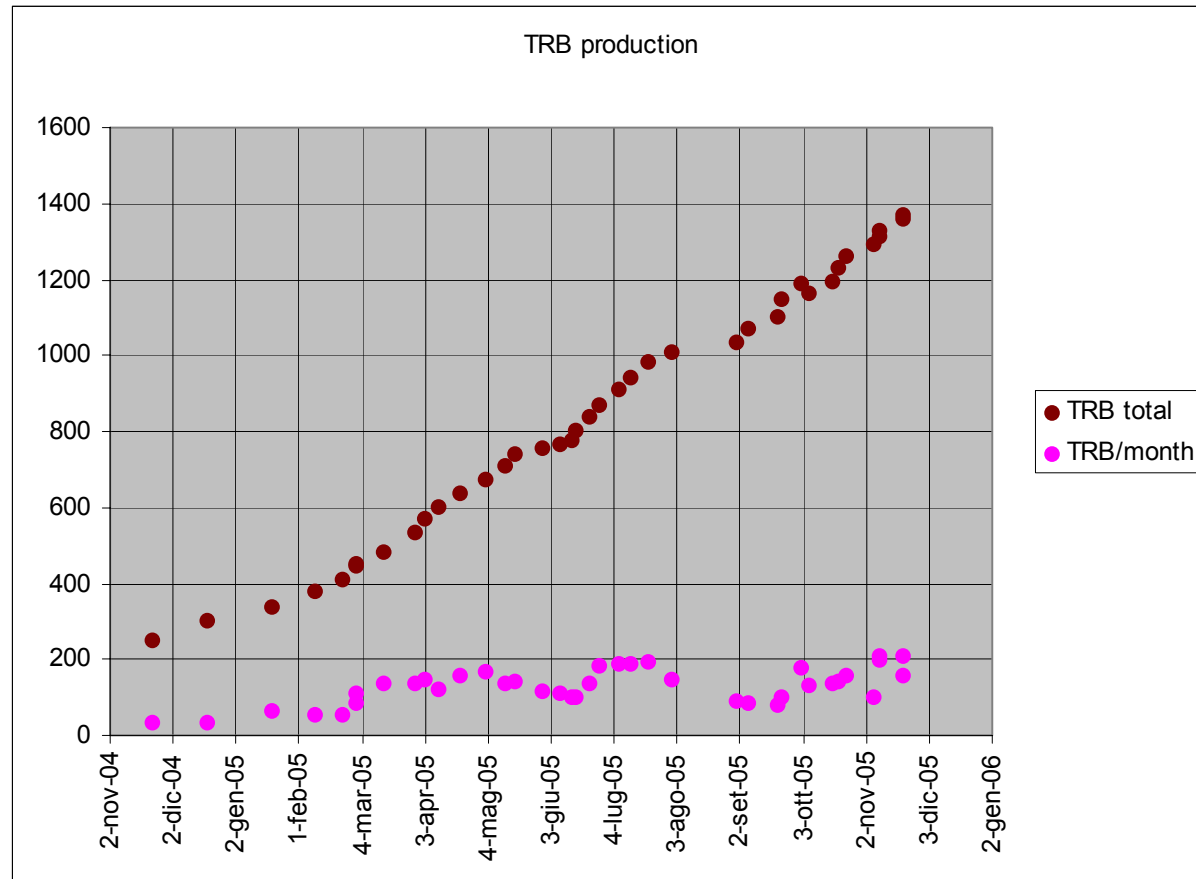
- MC production is a little earlier than forecast.
- TRB production recovered the delay
- Limiting factor: manpower testing TRB



# TRB

Produced up to now:

- 957 TRB  $\Phi$  (84 %)
- 333 TRB  $\Theta$  (88 %)
- 65 TRB  $\Phi 32$  (100 %)



# TRB statistics and problems

	TRB $\Phi$		TRB $\Phi$ -32		TRB $\Theta$	
ordered	1140		65		380	
delivered	957	84%	65	100%	333	88%
tested	847	89%	65	100%	333	100%
installed	705	74%	41	63%	252	76%
faulty boards	124	13%	9	14%	19	6%

- The amount of faulty boards is relatively high.
- The TRB production is near to end. Now we have to quantify the amount of an extra production, so testing carefully the faulty boards is mandatory (up to now they were simply left aside).
- **Manpower conflict between people testing TRB and people testing and installing MC. This limit the amount of TRB actually available for MC assembling.**