

Installation Plans for 2006

Mu Barrel Technical Board
CMS week December 6th 2005

A. Benvenuti
INFN Bologna

MT Schedule (Oral Version)

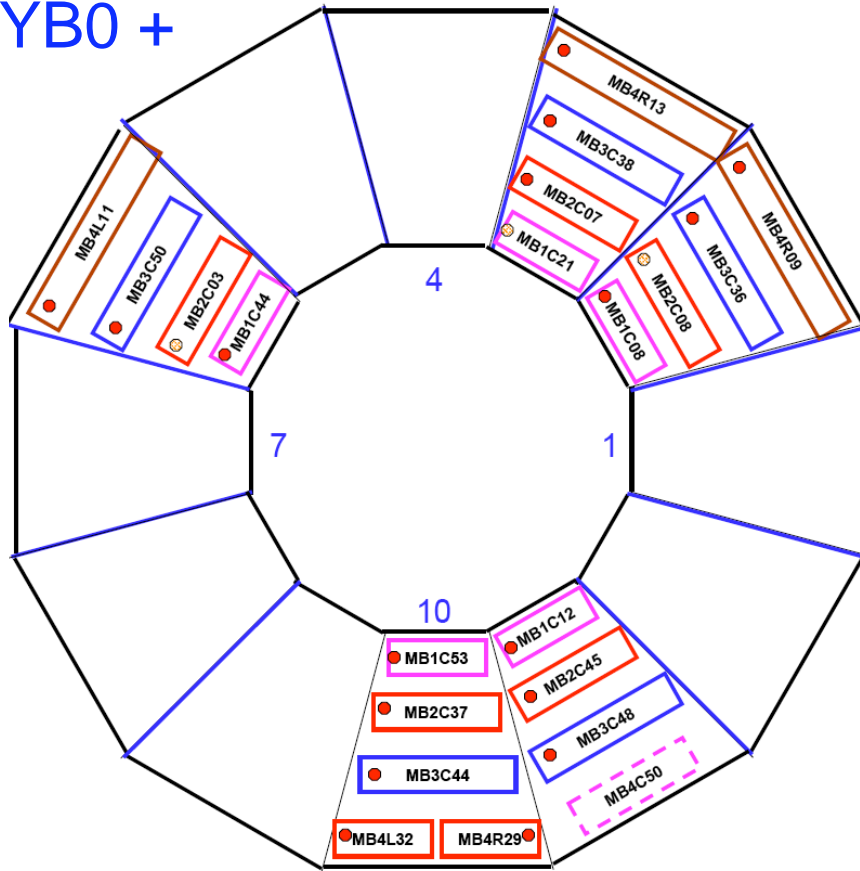
Activity Name	Start Date	Finish Date	Jan 06				Feb 06				Mar 06				Apr 06				May 06				Jun 06				Jul 06				Aug 06
			1	8	15	22	29	5	12	19	26	5	12	19	26	2	9	16	23	30	7	14	21	28	4	11	18	25	2	9	16
Cryo Welding	12/5/05	1/23/06																													
Install BMU, HB+,HB-, 2EB+SM, Tracker, Cabling	1/24/06	3/24/06																													
Close - Side	3/27/06	3/30/06									⊠																				
Close + Side	4/3/06	4/7/06									⊠																				
Coil Commissioning (6 weeks)	4/10/06	5/19/06																													
Open, Remove Tracker , ECAL , cables, insert field mapper, Close	5/22/06	6/23/06																													
Field Mapping (4 + 2 weeks)	6/26/06	8/4/06																													

- HB+ moves from alcove 25/01/07
- YB+1 over solenoid after YB0+ installation
- Scaffolding erected between YB+1 and YB0+ (may hinder YB0 work)

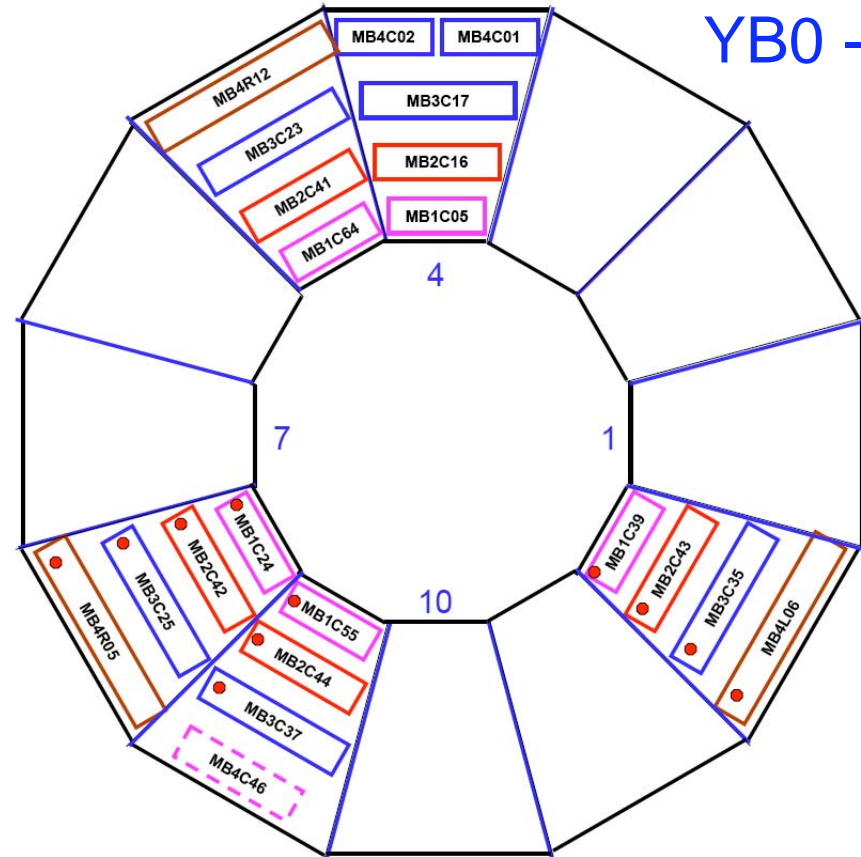
- YB-1 over solenoid after YB0- installation
- YB0 access for ancillary work possible during opening before field mapping

YB0 Installation Schedule

YB0 +



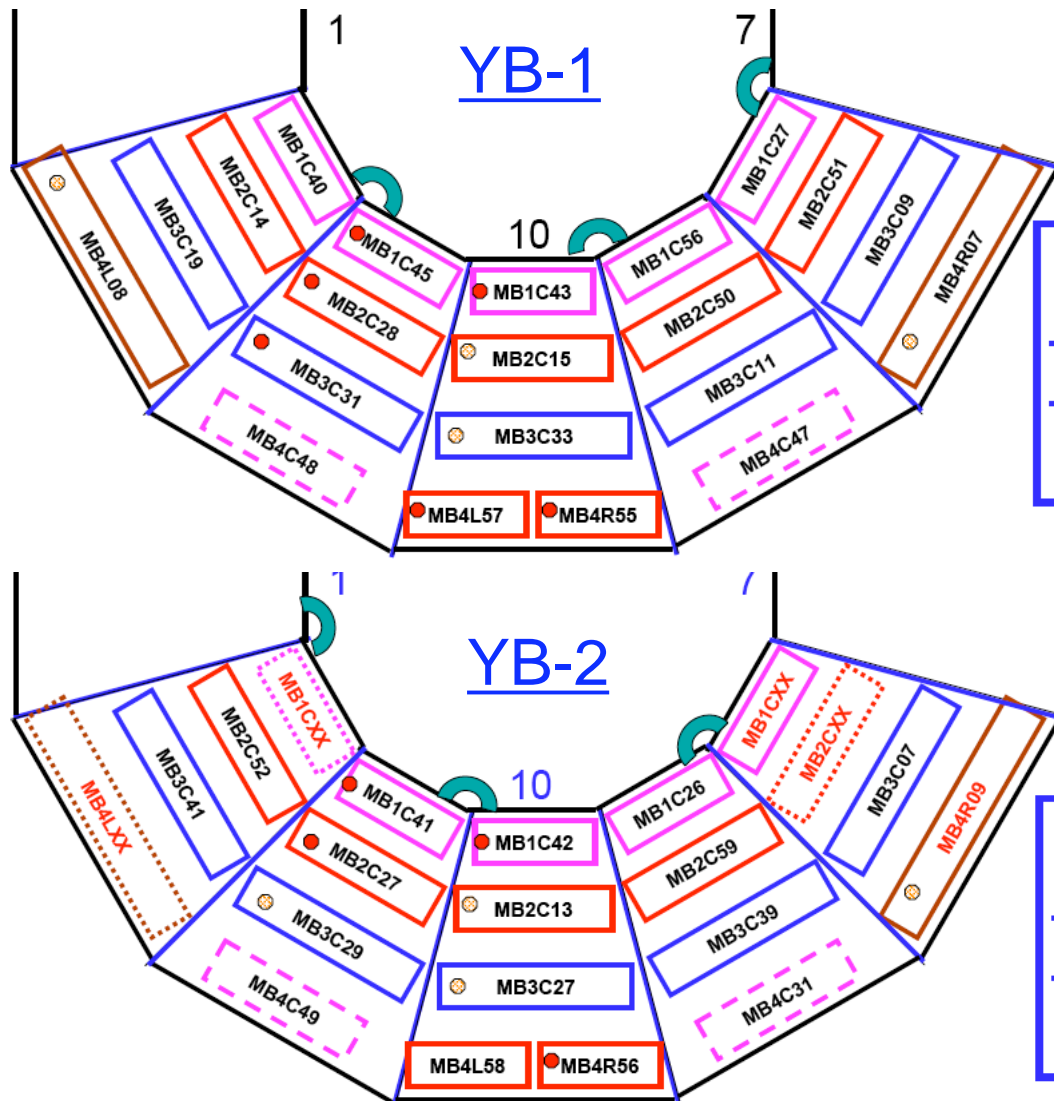
YB0 -



Install all sectors but YB0- S04 and S05:
YB0+ bottom, YB0+ top, YB0- bottom

Position of HO RBX still to be finalized. Holes to be drilled before MB1 Installation

YB- Installation



➤ Installation window= 2 weeks:
starts 1 week after YB-0

➤ YB-1 moved over cryostat

➤ Install YB-1 from front-end side, YB-2 from HV side

• Install S10, S11 in YB-1 and YB-2 (**16 chambers**)

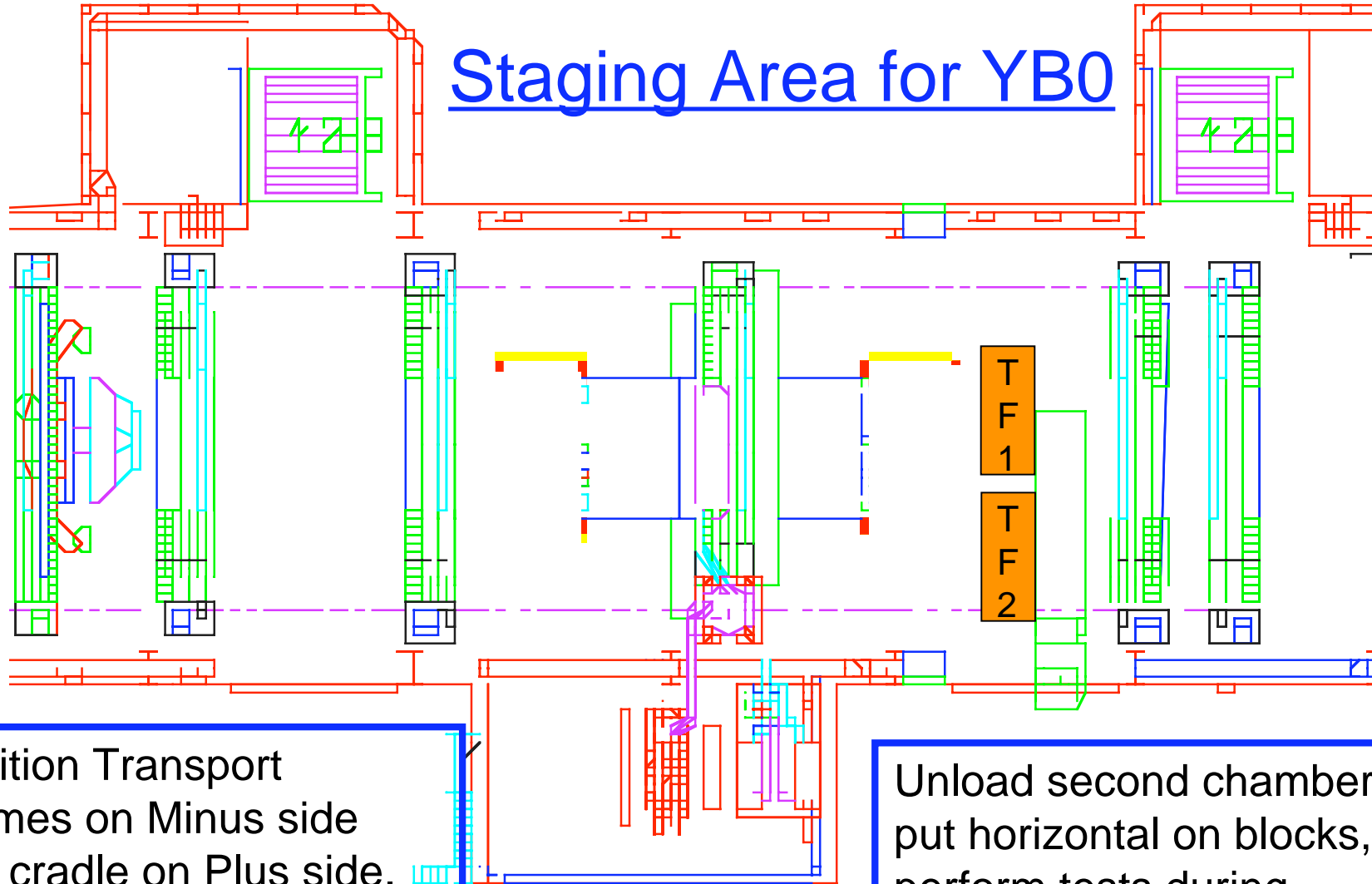
• Install additional MB4 (**5 ch**):

YB-1: S08, S12, S02

YB-2: S03, S08

• 2 RPCs still to be built ???

Staging Area for YB0



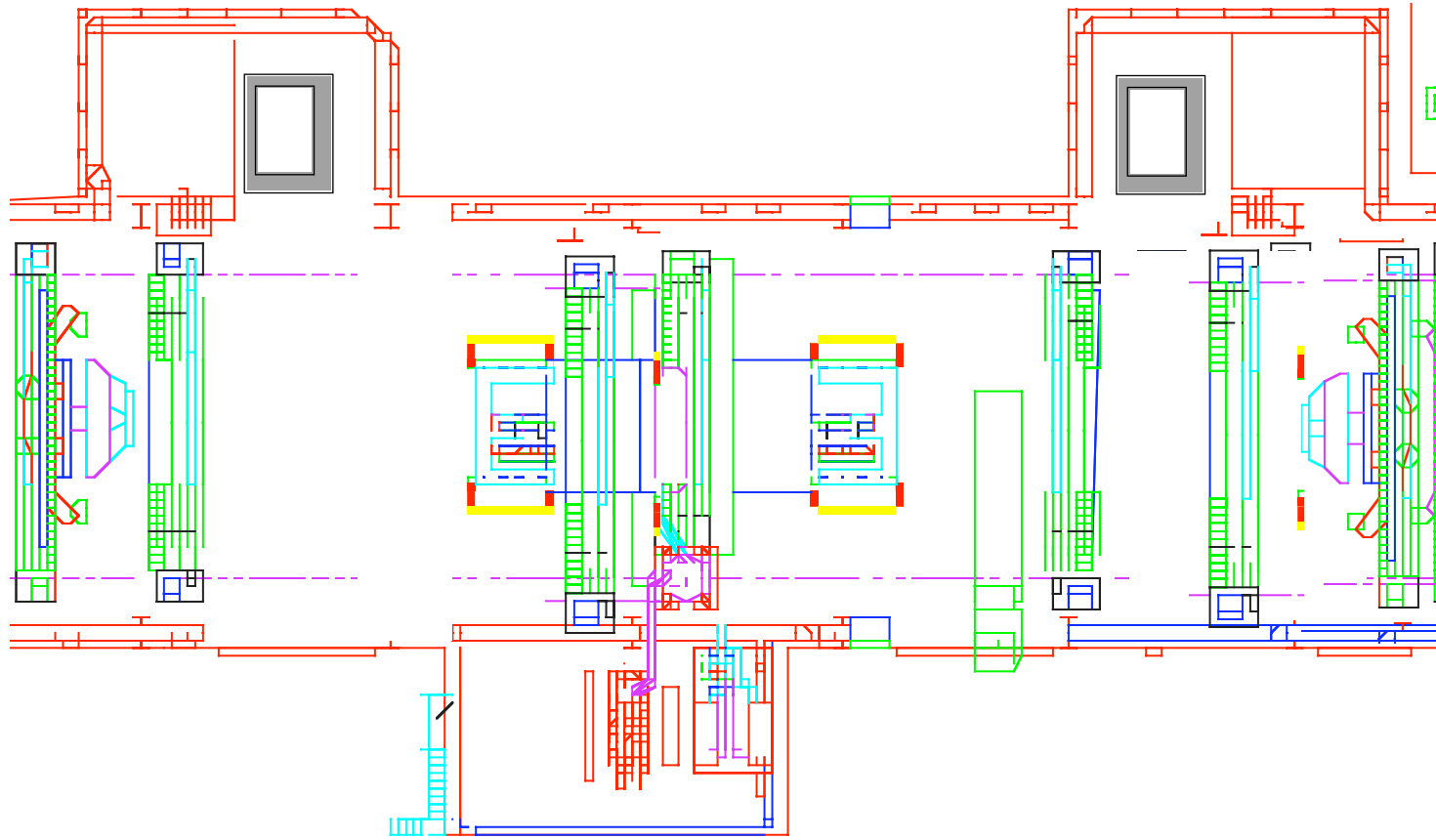
Position Transport
Frames on Minus side
and cradle on Plus side.

Unload chamber, put on
table, HV, MC tests and
move table to plus side
under cryostat "far" side.

Unload second chamber
put horizontal on blocks,
perform tests during
chamber 1 installation.

Requires additional set of
forks and lifting pieces
built by Aachen.

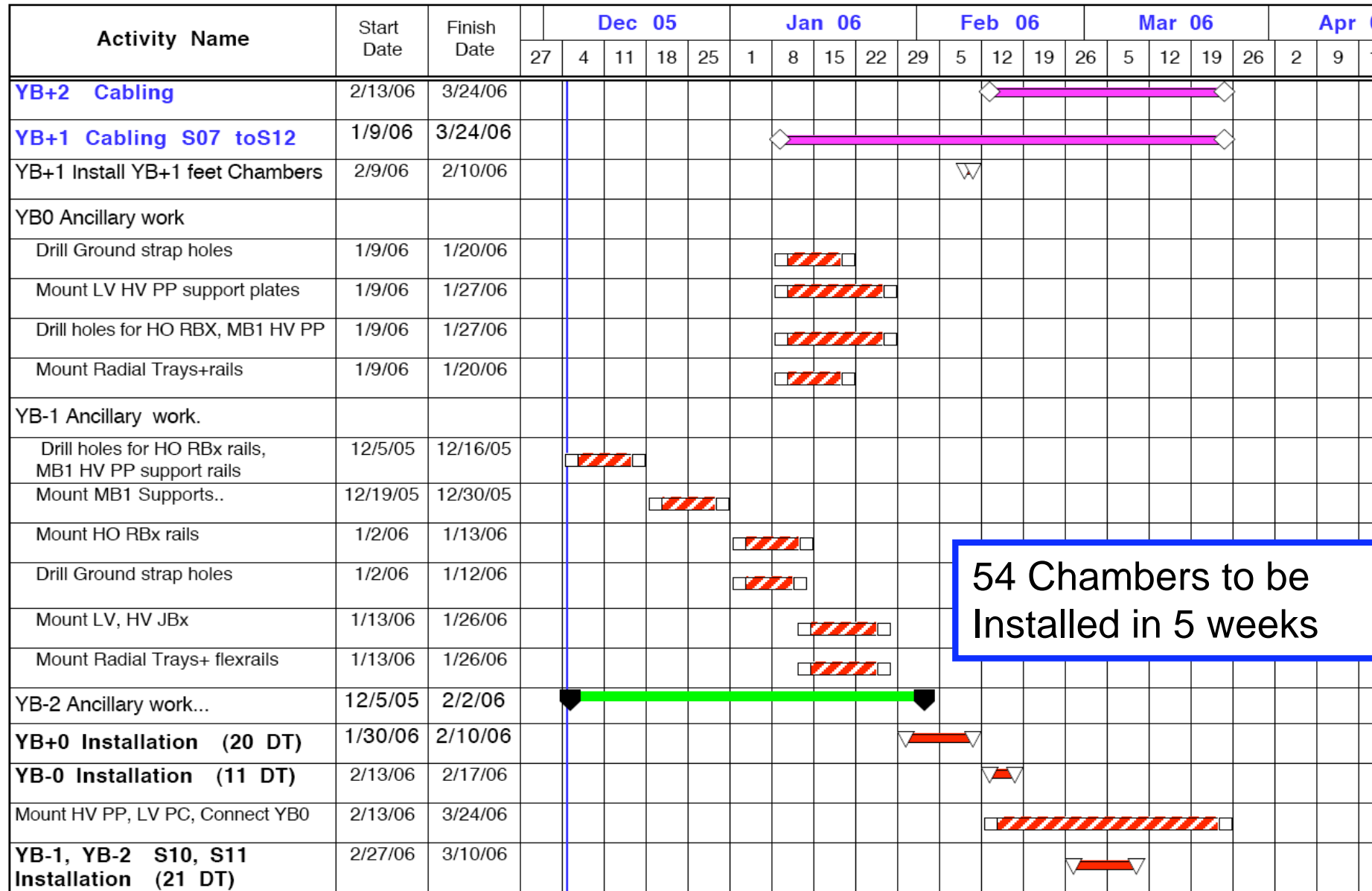
Access to YB+1 and YB+0



Scaffold on Plus side of YB+1 needed for cabling

Scaffold between YB+1 and YB+0 may be an hindrance during chamber connections to gas HV..

SX5 Main Activities up to MT



54 Chambers to be Installed in 5 weeks

- YB+1 cabling scheduled for January 9th with new team from Russia
- At least bottom sectors must be ready for cabling by December 21st .
- DT commissioning must be completed by December 16th at latest to leave time for tiding up chambers.
- Connections to final gas system to be started (Gerd) next week.
- RPC commissioning will be completed ?
- Request two scissor lifts or set priorities for YB+1 work (DT, RPC, HO?) up to end of year.

Installation After the Magnet Test

Preferred Installation Sequence:

- 1) YB-0 S04, S05: 9 +2 chambers
- 2) YB-1 ~8 Sectors: 29 +2 chambers
- 3) YB+2, YB+1 S01, S07: 16 chambers (UX installation)
- 4) YB-2 ~8 Sectors: 30 +2 chambers
- 5) YB0, YB-1, YB-2 S01, S07: 24 chambers (UX installation)

The chambers for the first 3 points (58) must be ready by the end of the Magnet Test.

Access time to YB0 can be minimized by commissioning (and cabling) YB+0 and YB-0 in parallel with two dedicated teams.

