

MC PRODUCTION

C. Fernández and F. Dal Corso

PRODUCTION STATUS

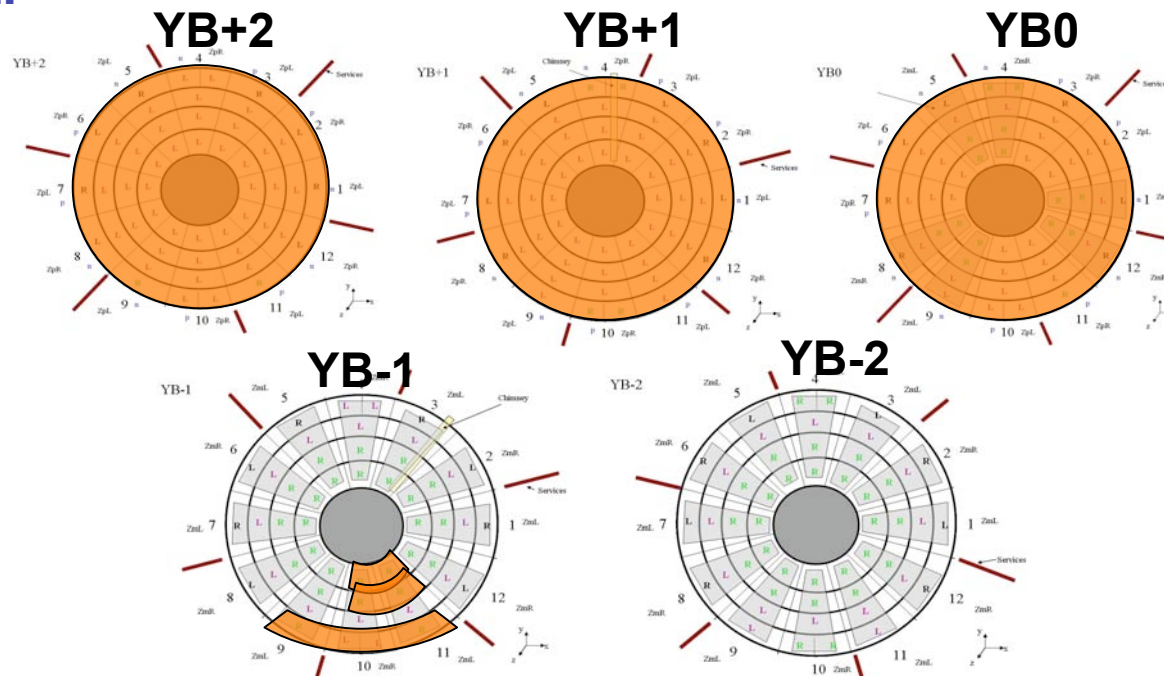
Up to **160 MCs** have already been delivered to Legnaro.

We have sent enough MCs to **complete YB+2, YB+1 and YB0**. MCs for YB-1 are being assembled now.

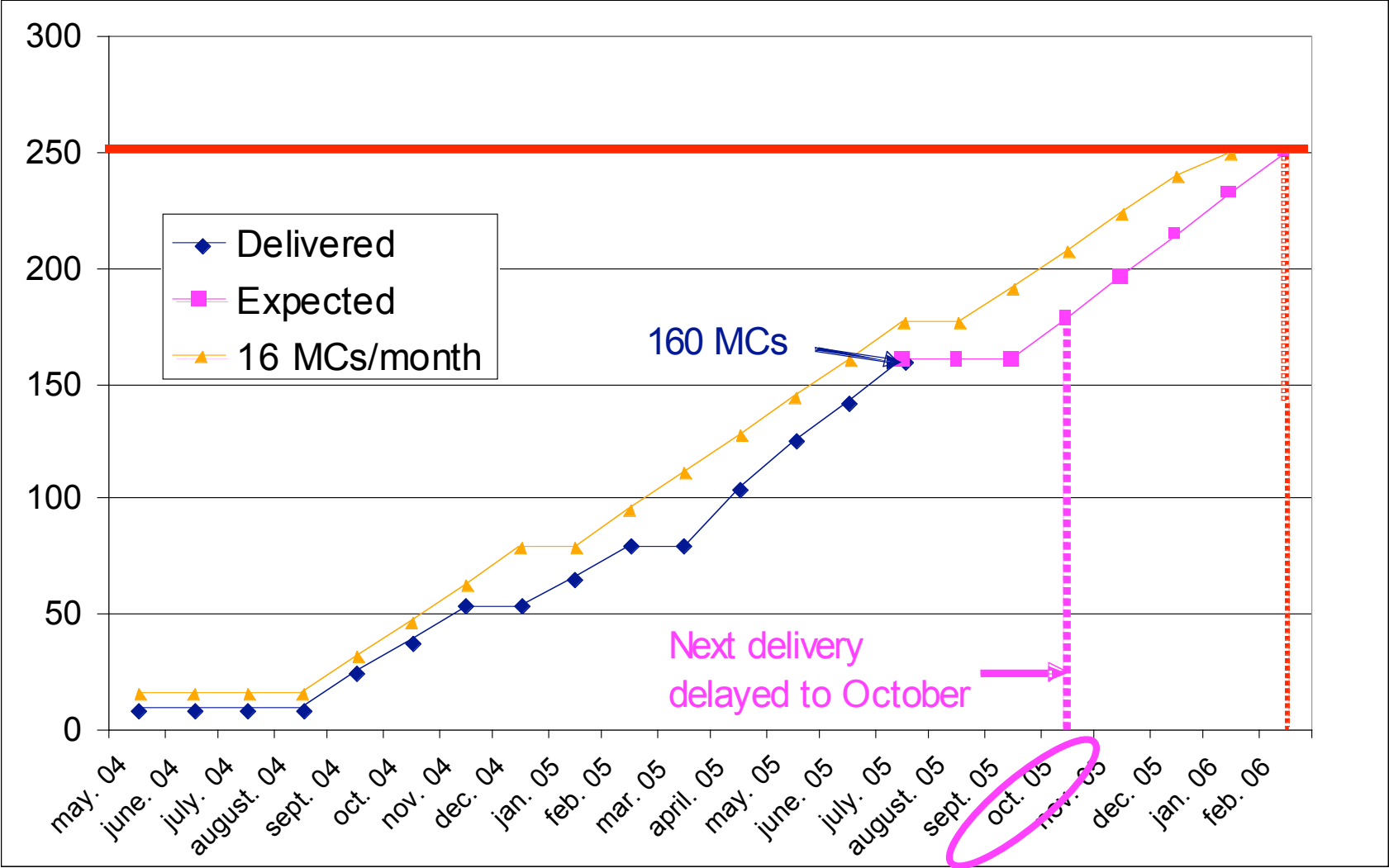
We will try to keep from now on the **rate of 18 MCs/month**.

Next delivery will wait until October due interference with ROS tests.

The **250 MCs will be finished by February 2006**, and then the spares will be assembled.



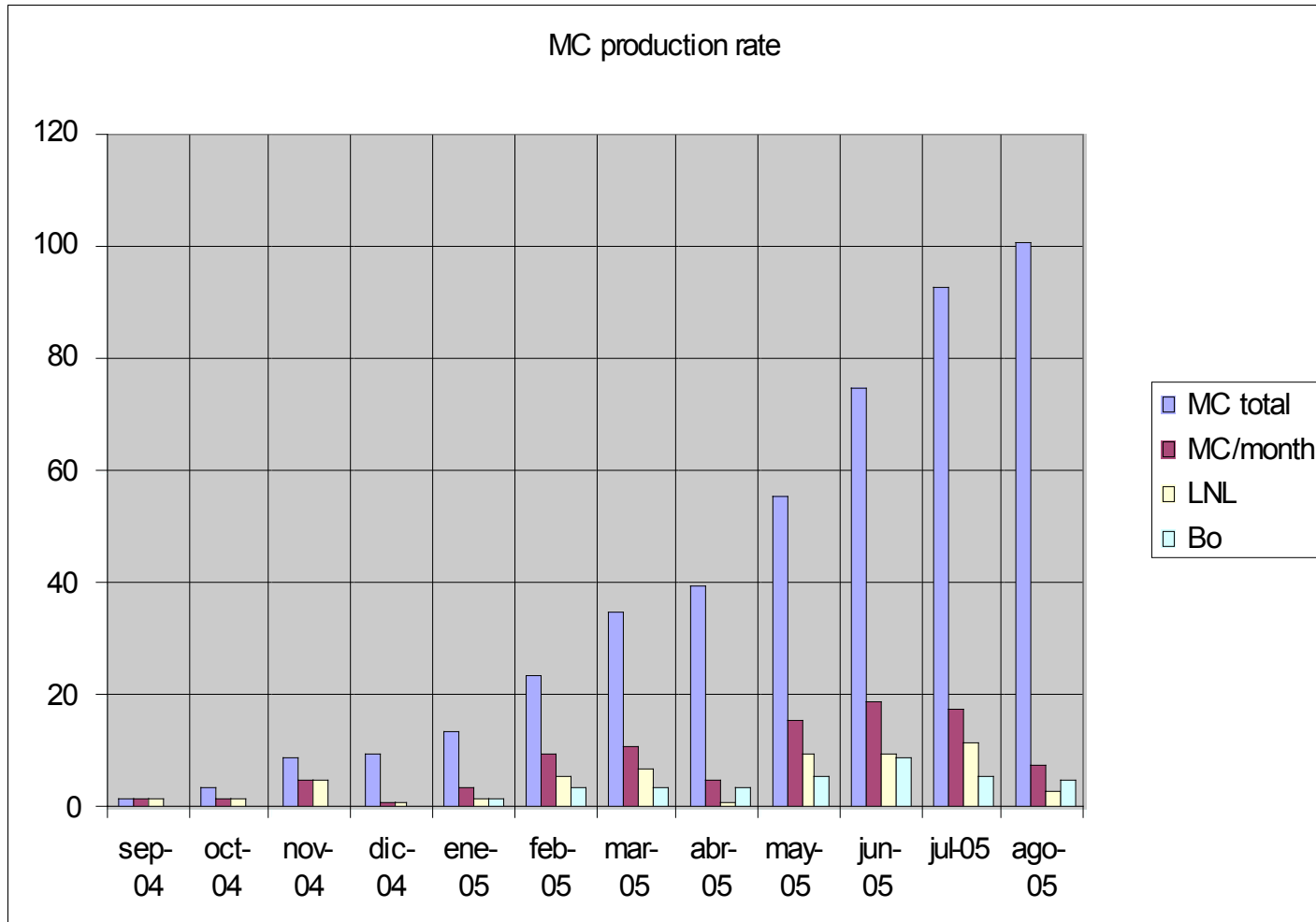
RO Minicrates



MC production in Italy

- **MC delivery up to now: 104. 71 already installed; 9 for the September installation (100% of the chambers to be installed), 21 for the November-January installation (45% of the chambers to be installed).**
- **In August we produced 11 MC. Not so bad, taking into account the holiday period.**
- **TRB delivery from Novatel stopped during August. Now we have some suffering from TRB-phi, as we have buffers only for about 30 MC (but about 20 is the number of MC already assembled –not tested-). Anyway I believe that the situation will improve soon.**

MC Production: Italy



MC Production: Italy

MC Schedule

Wheel	Station	Sector	MC type Label	MC type barcode	Padova/Bologna	12-sep	19-sep	26-sep	03-oct	10-oct	17-oct	24-oct	31-oct	07-nov
0	2	12	MB2-R/S-	212	Bo									
-1	2	11	MB2-R/S-	212	Bo									
-1	2	10	MB2-R/S-	212	Bo									
-1	2	9	MB2-R/S-	212	Bo									
-1	2	8	MB2-R/S-	212	Bo									
-2	1	11	MB1-R/S+	111	Bo									
-2	3	11	MB3-L/S0	300	Bo									
-2	3	10	MB3-L/S0	300	Bo									
0	1	6	MB1-L/S-	102	LNL									
0	1	3	MB1-L/S-	102	LNL									
0	1	2	MB1-L/S-	102	LNL									
0	2	6	MB2-L/S+	201	LNL									
0	2	3	MB2-L/S+	201	LNL									
0	2	2	MB2-L/S+	201	LNL									
0	3	12	MB3-L/S0	300	LNL									
0	3	9	MB3-L/S0	300	LNL									
-1	2	12	MB2-R/S-	212	LNL									
-1	3	12	MB3-L/S0	300	LNL									
-1	3	11	MB3-L/S0	300	LNL									
-1	3	10	MB3-L/S0	300	LNL									
-1	3	9	MB3-L/S0	300	LNL									
-1	3	8	MB3-L/S0	300	LNL									
-1	4	10,1	MB4(10)-L/S-	802	LNL									
-2	4	10,2	MB4(4)-R/S0	510	LNL									
-2	4	10,1	MB4(4)-R/S0	510	LNL									
-2	2	11	MB2-R/S-	212	NA									
-2	2	10	MB2-R/S-	212	NA									

MC Production: Italy

