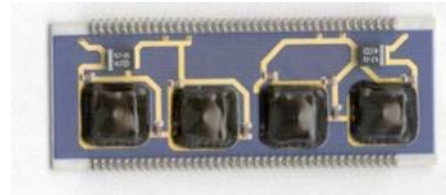


MiniCrates Status

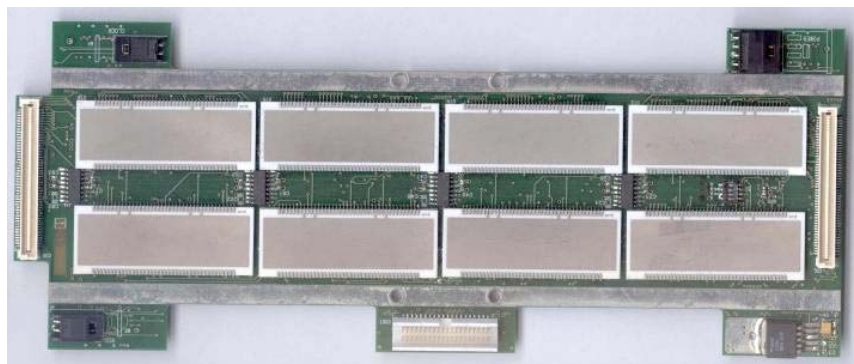
- Components Status (BTIM, TRB, CCB, SB)
- MC production: quantity and rate
- Schedule for near future

BTIM

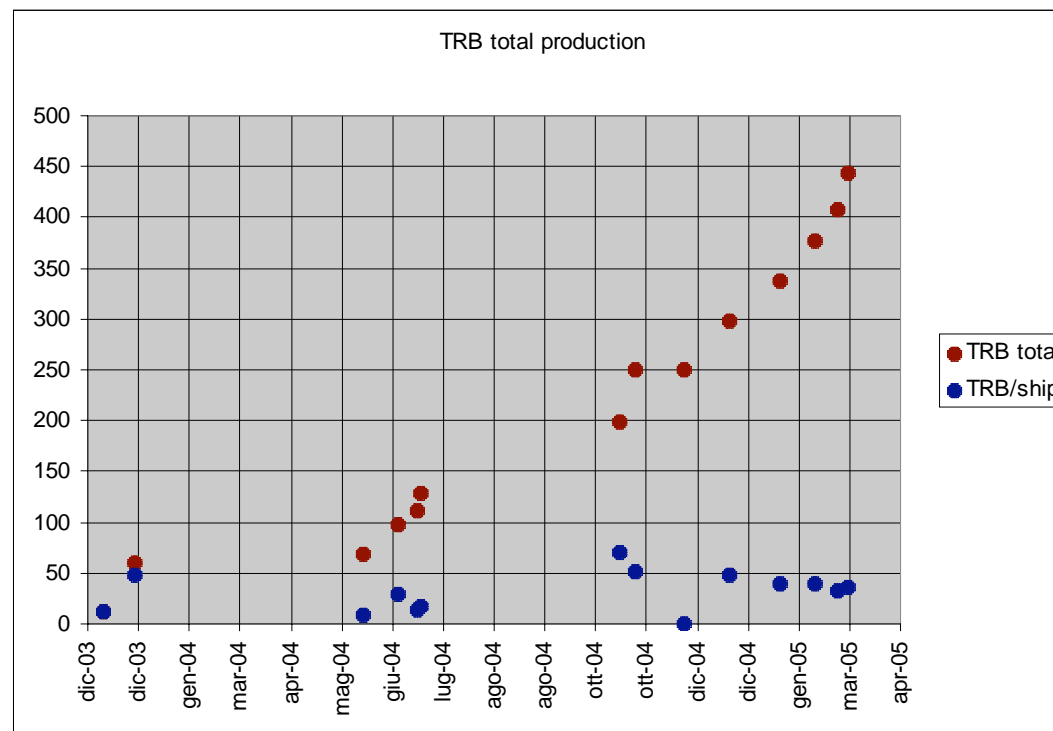


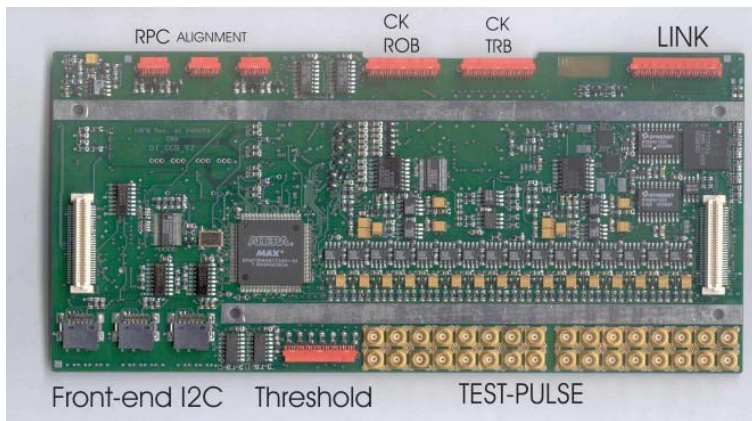
- Production near to the end.
- ~10,200/12,500 modules delivered by Metallux
- Limited amount of spares (over the 12500 foreseen). To be verified.

TRB



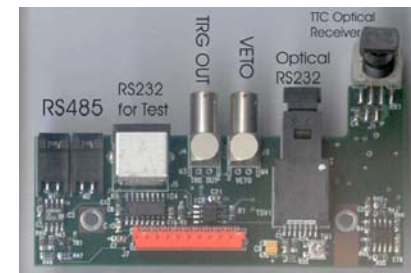
- Produced up to now:
 - 275 TRB Φ
 - 155 TRB θ
 - 14 TRB $\Phi 32$
- Production rate still too slow





CCB

CCB link

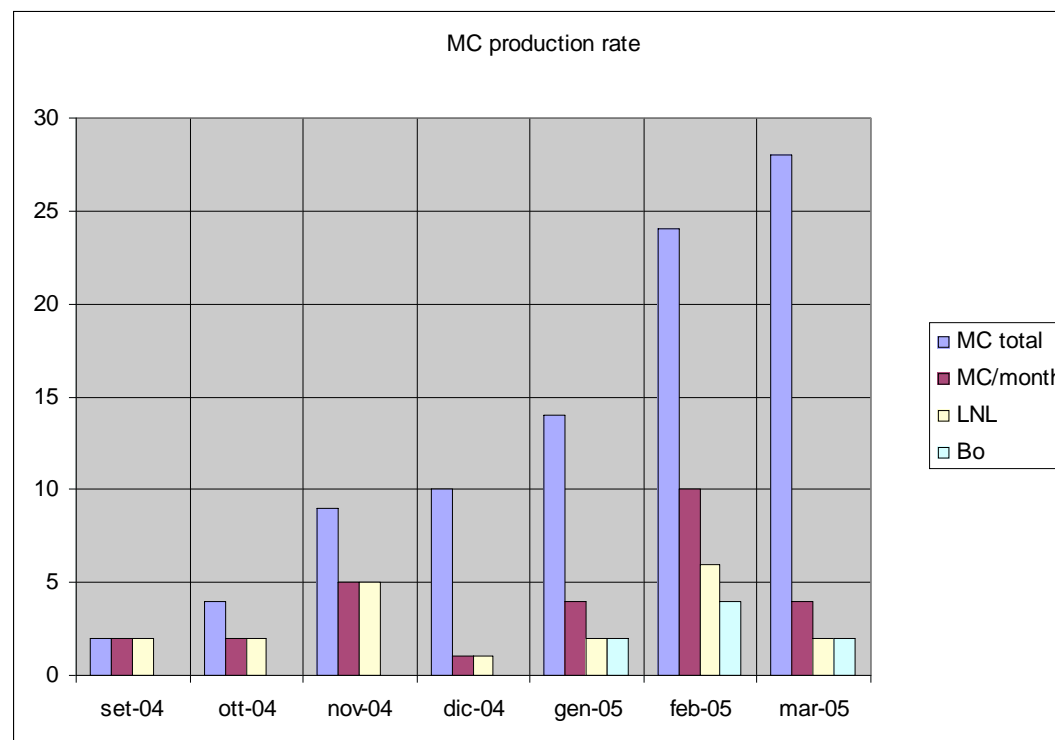


SB

Production completed (290 sets).

MC production

	A	B	C	D	E	F
1	MC type Label	MC type barcode	spediti da CIEMAT	presenti a PD	presenti a BO	spediti al CERN
2	MB1-L /S-	102	28	12	6	10
3	MB1-R /S+	111				
4	MB1-L Ch./S-	122				
5	MB1-R Ch./S+	131				
6	MB2-L /S+	201	13	3	1	9
7	MB2-R /S-	212				
8	MB2-L Ch./S+	221				
9	MB2-R Ch./S-	232				
10	MB3-L /S0	300	14	8	1	5
11	MB3-L Ch./S0	320				
12	MB4(s)-L /S+	401	3	3		
13	MB4(s)-L /S-	402				
14	MB4(s)-R /S+	411				
15	MB4(s)-R /S-	412				
16	MB4(s)-R Ch./S-	432				
17	MB4(4)-L /S0	500	2			2
18	MB4(4)-R /S0	510				
19	MB4(4)-R Ch./S0	530				
20	MB4(8-12)-L /S+	601				
21	MB4(8-12)-L /S-	602				
22	MB4(8-12)-R /S+	611				
23	MB4(8-12)-R /S-	612				
24	MB4(9-11)-L /S0	700	3	1	2	
25	MB4(9-11)-R /S0	710				
26	MB4(10)-L /S+	801				1
27	MB4(10)-L /S-	802	2			1
28	MB4(10)-R /S+	811				
29	MB4(10)-R /S-	812				
30			65	27	10	28
31						



MC production

Production rate still too slow.

Constraints:

- Limited man power
- Limited TRB availability
- Assembling very complex
- Test rather puzzling

The near future

- 6 MC still required for the YB+2 completion.
- ~15 MC already received from CIEMAT for the YB+1.
- A test stand for the pre-screening of TRBs is under development. This will cause a temporary reduction of the production rate, but it is a good investment for the future.