



Status of Torino-Dubna Production



Aluminum Plates production:

- Torino: all plates (3703) cut and sent to Dubna, Torino part production finished and cut table hibernated.
- Pechiney: contract F340/EP closed.

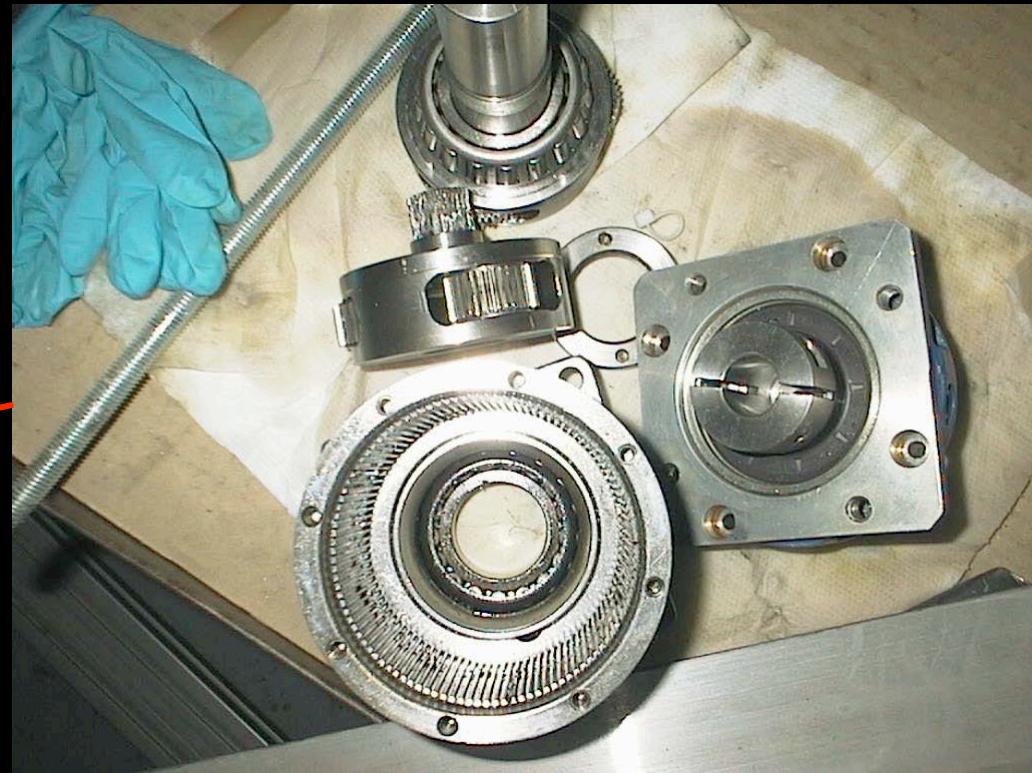


Status of Torino-Dubna Production



Field Strip production:

- Dubna: 1 week lost due to crane problem, 3 weeks lost due a mechanical failure (one motor reductor replaced), delay impact to Leones





Status of Torino-Dubna Production



Plates for n.chambers

	completed	to do
MB1-S	<u>60</u>	6
MB4(9,11)	<u>11</u>	0
MB2-S	<u>62</u>	4
MB4(10)	6	5
MB3-S	59	7
MB4(4)	8	3
MB4(8,12)	8	3
MB4-S	21	13

Completion in may 2005.



MB4 assembly status



One problem found on I-beam tool01, leak of compressed air in the ALCOA machined plates - honeycomb interphase. Will be fixed with extra long screws and an external collector to inflating pipes (one technician for 2 weeks).

0





MB4 assembly status



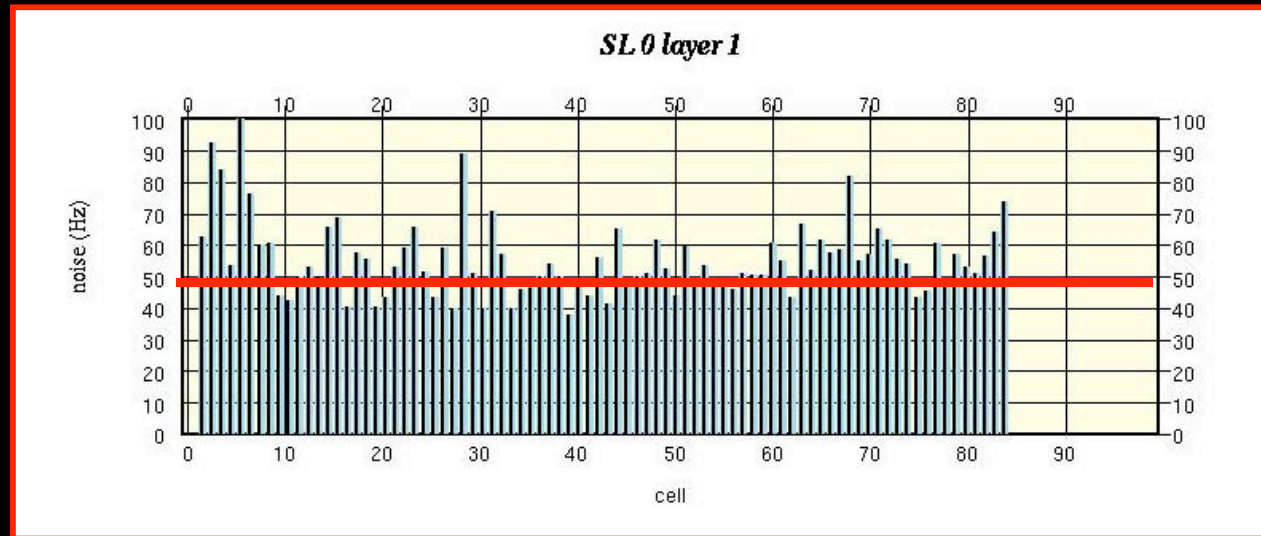
SL Produced:

- 1 Under mechanical assembly
- 11 mechanically assembled
- 9 Gas tested (1 failure on SL006)
- 7 HV tested in air (2 channel disconnected, 2 channels with high current)
- 5 HV tested in gas
- 3 Noise and Test Pulse tested
- 2 under Cosmic Test

S
L
0
0
1

Recent improvements:

- relative SL alignment with external comparators (<0.1mm, see Silvia QC talk)
- full debugging of the SL and cosmic test





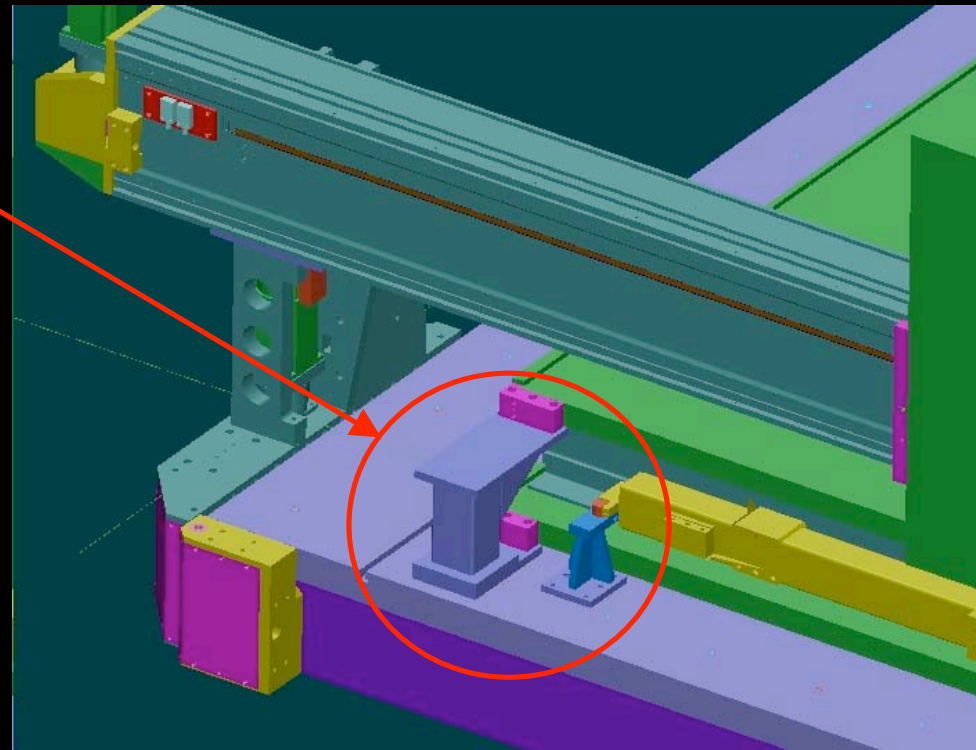
MB4 assembly status



What we miss to build a chamber:

1. SL and hc alignment blocks.
Status: executive drawings delivered to firm, expected by the end of the year (Mimmo).
2. Balanced beam to handle and rotate chamber
Status: executive drawings delivered to firm, expected by the end of the year (Paolo).
3. RPC interface plate positioner. Status: 3D completed, executive by the end of next week (P. M)

S
L





Material Procurement



Torino Material Check - November 2004 (Borsato)

	Received	Total including spares	Missing	Comment
HVB16		2068	2068	
HVB8		44	44	
HV contacts strips FE side	30500	35500	5300	
HV contacts strips HV side	32500	35500	3000	
HV contacts cathods FE side	29000	35500	6500	
HV contacts cathodes HV side	33000	35500	2800	
HVC16	1916	2090	174	
DC4(w)	7550	8360	810	
DC4(y)	7200	8008	808	
DC5(y)	320	352	32	
JL7(w)	1820	2024	204	
JL7(y)	1820	2024	204	
JL8(w)	80	88	8	
JL8(y)	80	88	8	
Ground HV side	25	88	63	urgent
Interlock	25	88	63	urgent
HV bundles MB4(1-7) 1A	28	33	5	
HV bundles MB4(1-7) 2A	28	33	5	
HV bundles MB4(1-7) 1B	28	33	5	
HV bundles MB4(1-7) 2B	28	33	5	
HV bundles MB4(8-12) 1A	10	11	1	
HV bundles MB4(8-12) 2A	10	11	1	
HV bundles MB4(8-12) 1B	10	11	1	
HV bundles MB4(8-12) 2B	10	11	1	



Material Procurement



Torino Material Check - November 2004 (Madrid)

	Received	Total including spares	Missing	Comment
HV cover MB4(1-7)	57	66	9	
HV cover MB4(8-12)	22	22	1	1 was damaged
HV connectors male	156	176	20	
FE cover MB4(1-7)	64	66	2	
FE cover MB4(8-12)	22	22	0	
L profiles MB4(1-7)	264	264	4	SL006 will probably be discarded so we need additional 4 profiles
L profiles MB4(8-12)	88	88	0	
Ibeam endplug plastic	52000	71000	19000	
Wire endplug plastic	65000	71000	6000	
Covers wire endplug	65000	71000	6000	
HV Ibeam protection plastic	55000	71000	16000	
Low Voltage connector	80	88	8	
Gas stoppers	160	176	16	



Material Procurement



Torino Material Check - November 2004 (Pegoraro)

	Received	Total including spares	Missing	Comment
FE16	1900	2090	242	40 boards to be repaired, ship to Padova
Slow control Internal bus25	60	66	6	
Slow control internal bus 24	20	22	2	
Predecode bus 3.9	60	66	6	
Predecode bus 3.7	20	22	2	
TP3	22	22	0	
TP4	458	506	48	
Slow control feed through	80	88	8	
Slow control shield	80	88	8	
16ch Internal signal cable	900	2090	1196	6 bad cables
16ch feed through	2000	2110	120	30 bad connectors, ship to Padova
BeCu contacts	3700	4180	480	100 contacts used to train soldering