



Padova – Legnaro report

Contents

- **Production status**
- **Analysis summary**
- **Future Production**
- **Conclusions**



Legnaro production status*

Summary (26/04/04)

43 CHAMBERS completed :

	MB3+	MB3-	MB4/4	MB3c	MB4/4c
# Assembled Chambers	24	15	4	0	0
(tested with cosmic rays)	24	13	4	0	0
# Chambers sent to CERN	24	10+3	2+2	0	0
					⤴ (2 eq. with HVB-I)

138 SuperLayers

(**93 phi**, **45 theta**) (3 more chambers ready to be assembled)

560 Layers

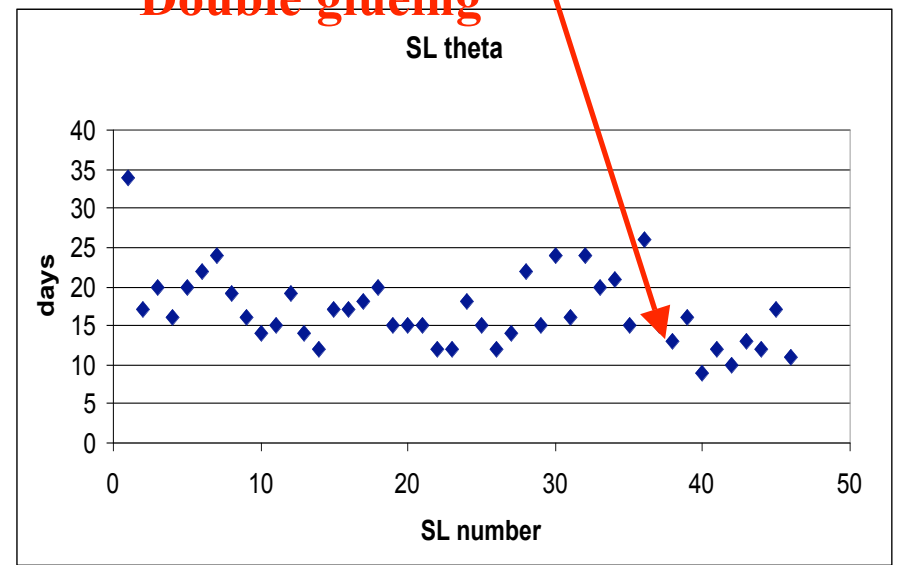
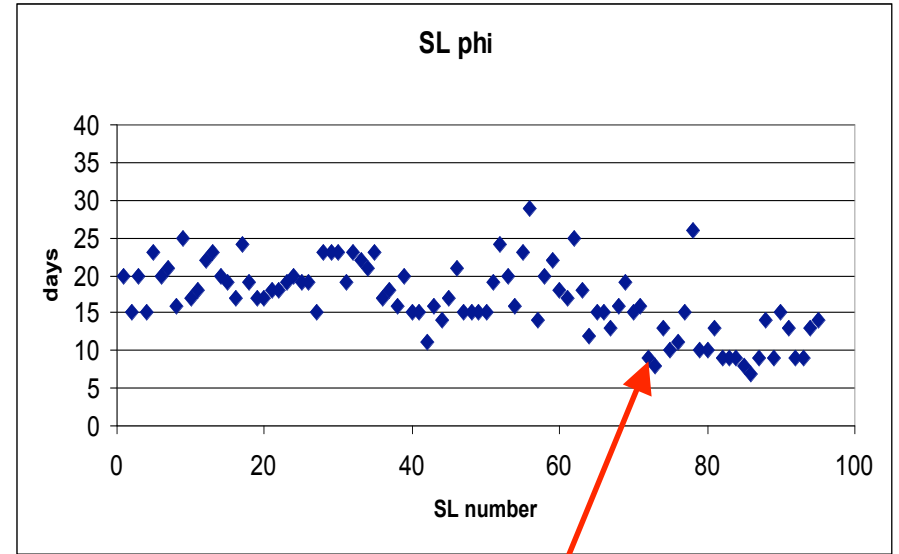
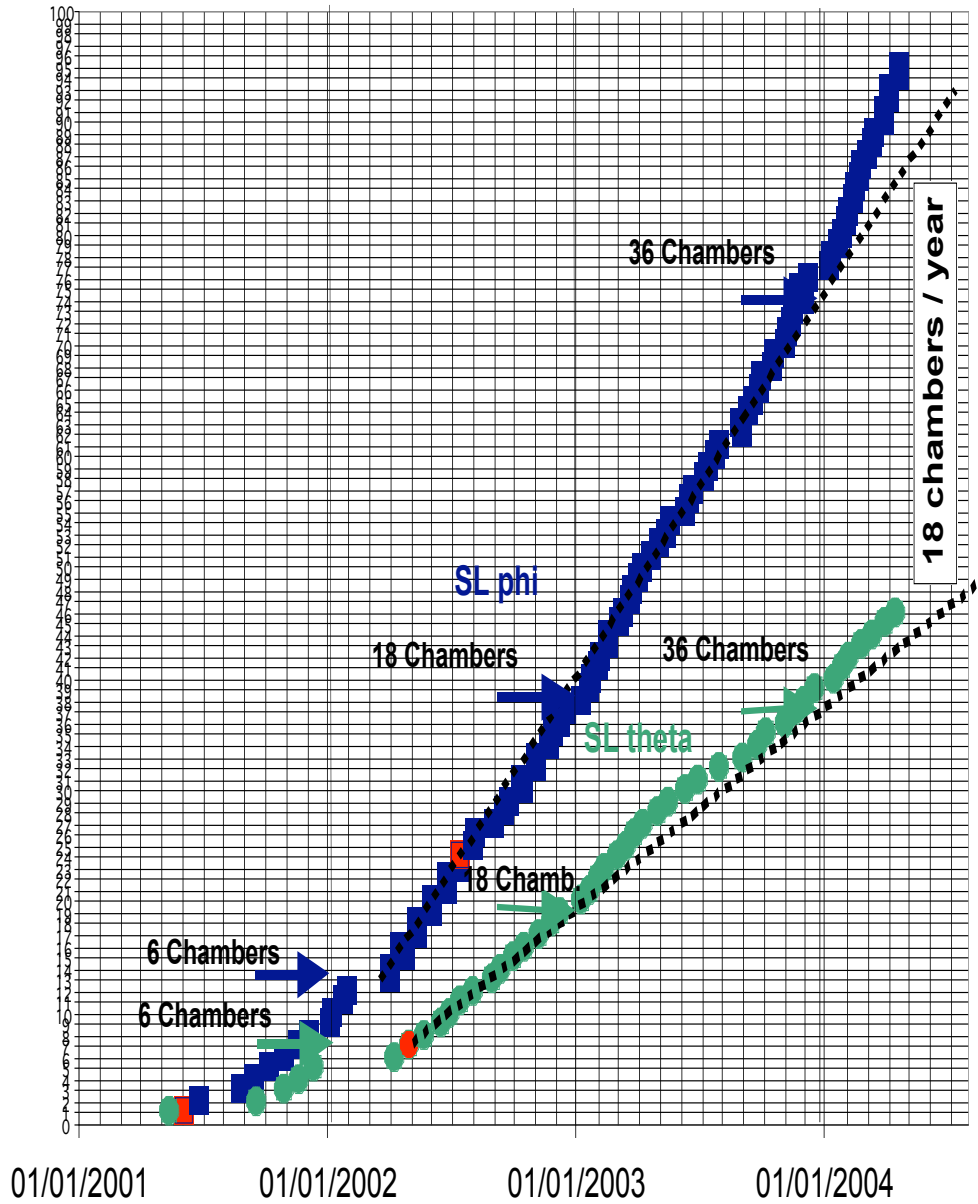
*P.C., E. Torassa.....

28/04/2004

Paolo Checchia DT Session

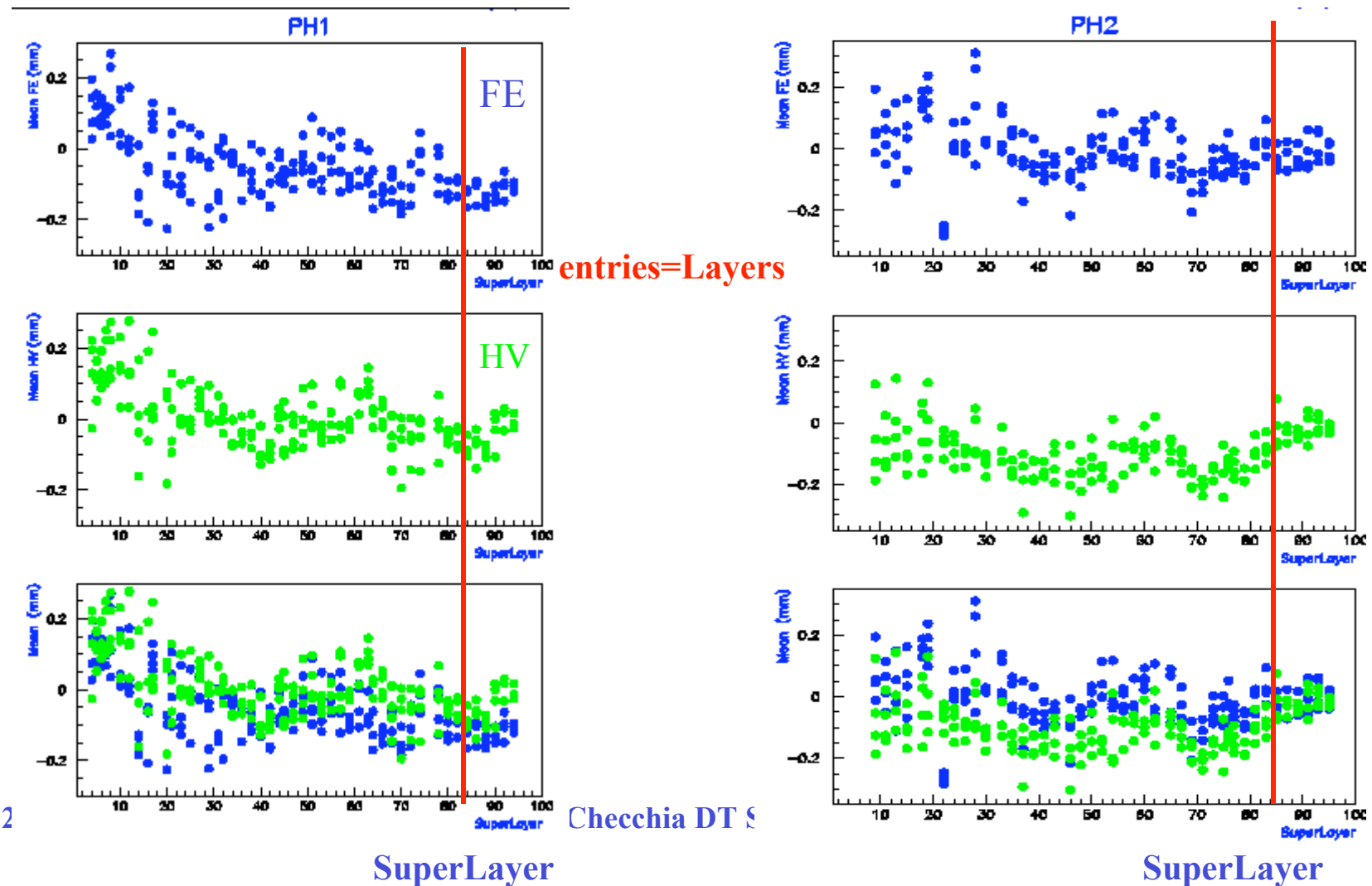
2

~2.5 chamber/month



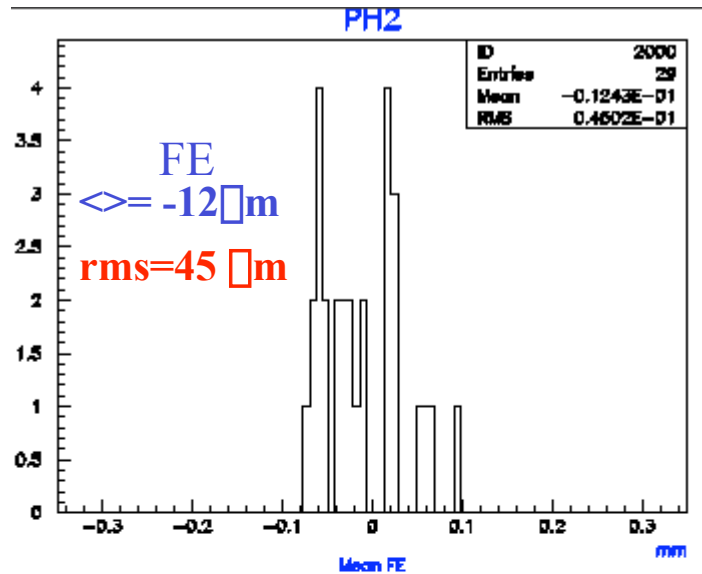
Analysis Summary (wire position)

new reference system for wire positioning



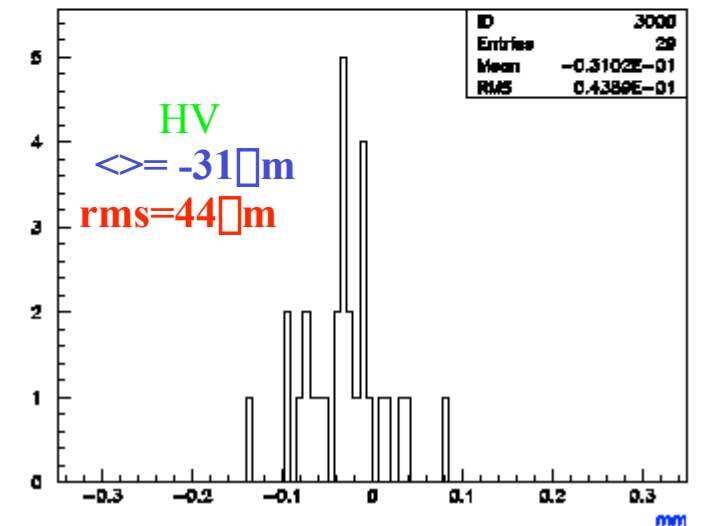
Analysis Summary (wire position)

new reference system for wire positioning



entries=Layers

It was about 90!



It was about 80!

Future Production

Chimney chambers:

- Running out of standard **th** plates (1 SL more)



- Plan to modify **th** table for the chimney production (in 2 weeks)

- **phi** table(s)

continue the production with 2 tables and switch for the chimney production **ONLY** one table when necessary (avoiding to come back to standard production for that table)

Wires:

ready for massive wire production for Torino

Discharges inside cells

SL □45 under study

Wire-cathode discharges found in one layer

Rate: 1 discharge/day Current: 200 nA Shot_{TIME}: < 10 sec

all slabs correctly inserted

First test

gas flow 1000 cc/min □ 250 cc/min

O₂ 30 ppm □ 100 ppm

no any more discharges

Conclusions

- **2/3** of the total production
- Production **rate** stable at **~ 2.5 chamber/month**
- Quality Analysis shows reasonable results
- Recall: Survey measurements confirmed by Legnaro table measurements (no relevant news w.r.t. CMS week)
- Tools and tables ready to be modified for Chimney chambers, production plan under study.