



Short Summary on DTs



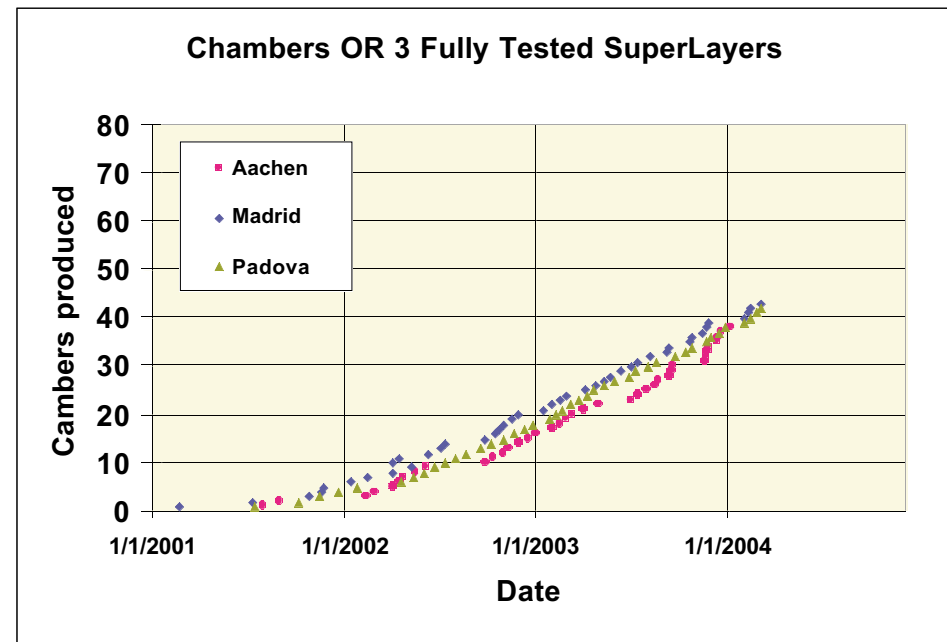
Report from the DT Session

Hans Reithler

DT assembly:

- Reached 50% of DT production at Aachen, Madrid, Padova (Legnaro) - including test.
- Terminating pre-production of Main large components:
Al plates
Cathodes
Honeycomb panels.
- Fourth assembly site starting at Torino: achieved milestone of gluing first layer. Ready to start assembly.

50% of 250 DTs

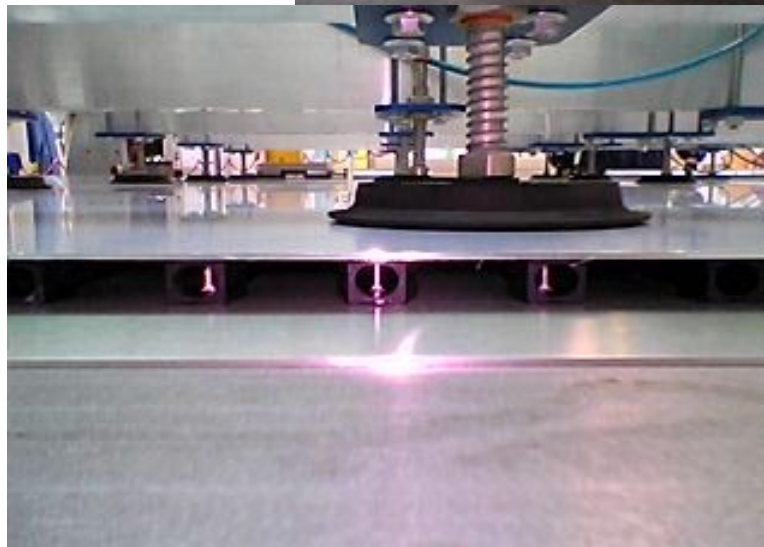
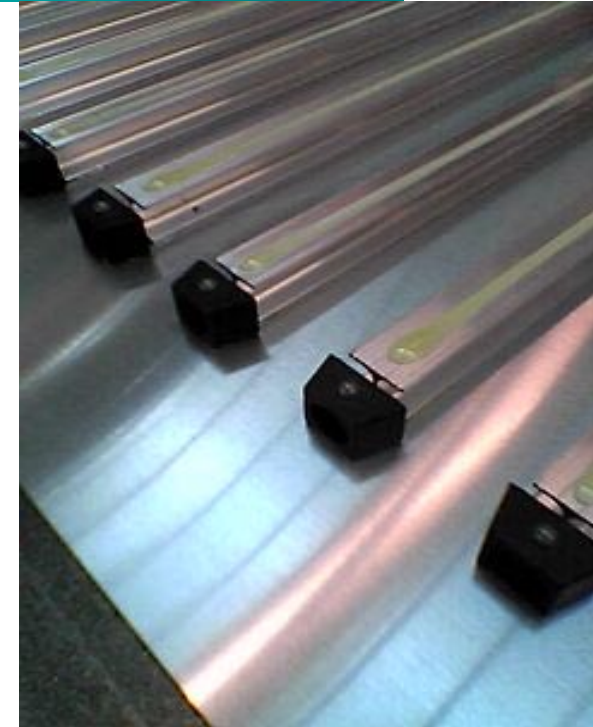
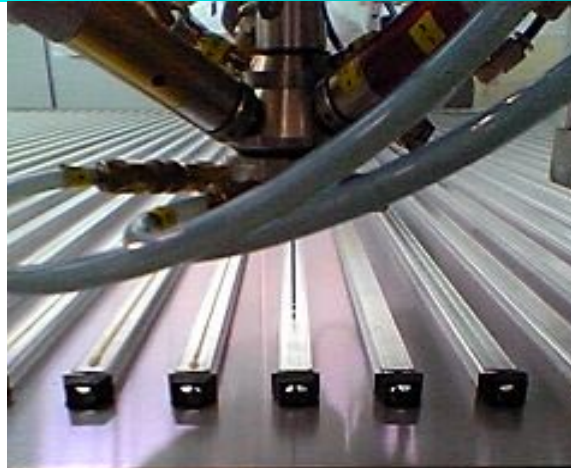




Status of Torino MB4 Production Line



Glueing of 2nd plate





Status of Torino MB4 Production Line



HVB Failures Since November 2003

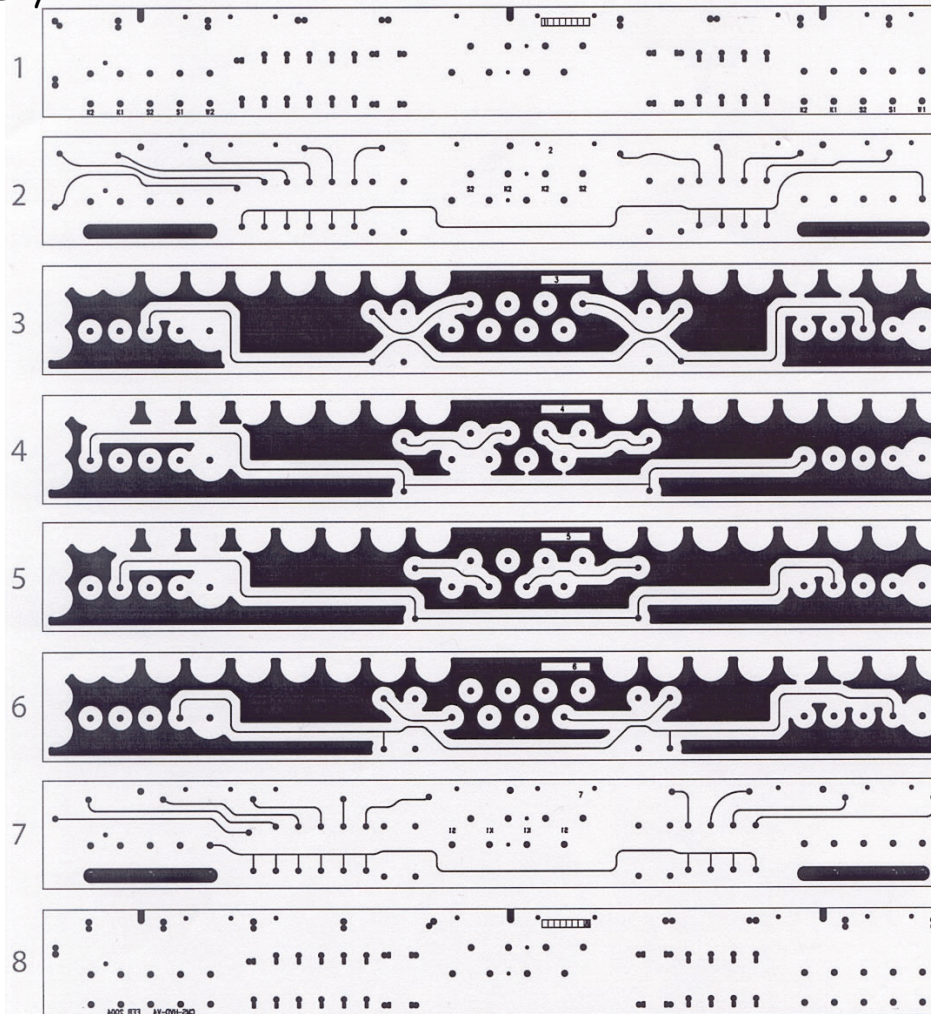
Date	Chamber	HVB	HV-time	Last on HV
28/11/03	MB3C14 Phi2 A	W1e(865)	2490	03/07/2003
28/11/03	MB3C12 Phi2 B	?(617)	2444	26/06/2003
05/12/03	MB3C04 Theta B	W1b(2329)	2513	26/06/2003
14/01/04	MB3C04 Theta A	W2b(2330)	~ 3000	18/12/2003
15/01/04	MB3C24 Theta B	W2g	>2000	18/12/2003
16/01/04	MB3C02 Phi1 B	W1d	2600	04/07/2003
16/01/04	MB3C06 Theta B	W2d	2090	22/04/2003
20/01/04	MB3C09 Theta B	W1c	2590	26/04/2003

We did not have any additional HVB failures

The decision was taken to replace the HVB for the YB2+ bottom with HVB_I (enlarged distance wire/ground) and produce a new HVB for the remaining chambers.

Overview of all 8 layers of the HVB_v5:

Layer: 040219 P. Zatti + E. Borsato



Pads + components

Wires

Strips

Cathodes

Cathodes

Strips

Wires

Pads + components

HVB_v5:

Layers 2-7 same as for HVB_v4; both ensure max. spacing and >1.5 mm/kV.

- Layers for wires now as inner layers, for safer prepreg adhesion.

- On outer layers have only pads and components (max. spacing).

- HV protection on outer layers: mainly by glue (safer than prepreg "no flow").

- Some minor tuning in progress.

- No cost increase w.r.t. HVB_v4, producer claims (offer).

- THIS VERSION CHOSEN FOR FUTURE at recent DTIC meeting.

DT long-term tests: Accident after > 3 month test: some HV distribution PCB “HVB” failing. Will substitute ~80%, to reduce risk of failure in installed chambers. New HVB production and substitution has impact on installation schedule.

Survey of DTs, for alignment: Running smoothly - also serving as QC of chambers...

Piping on wheels: Second wheel being finished.

First installation of DT+RPC: Scheduled for May.