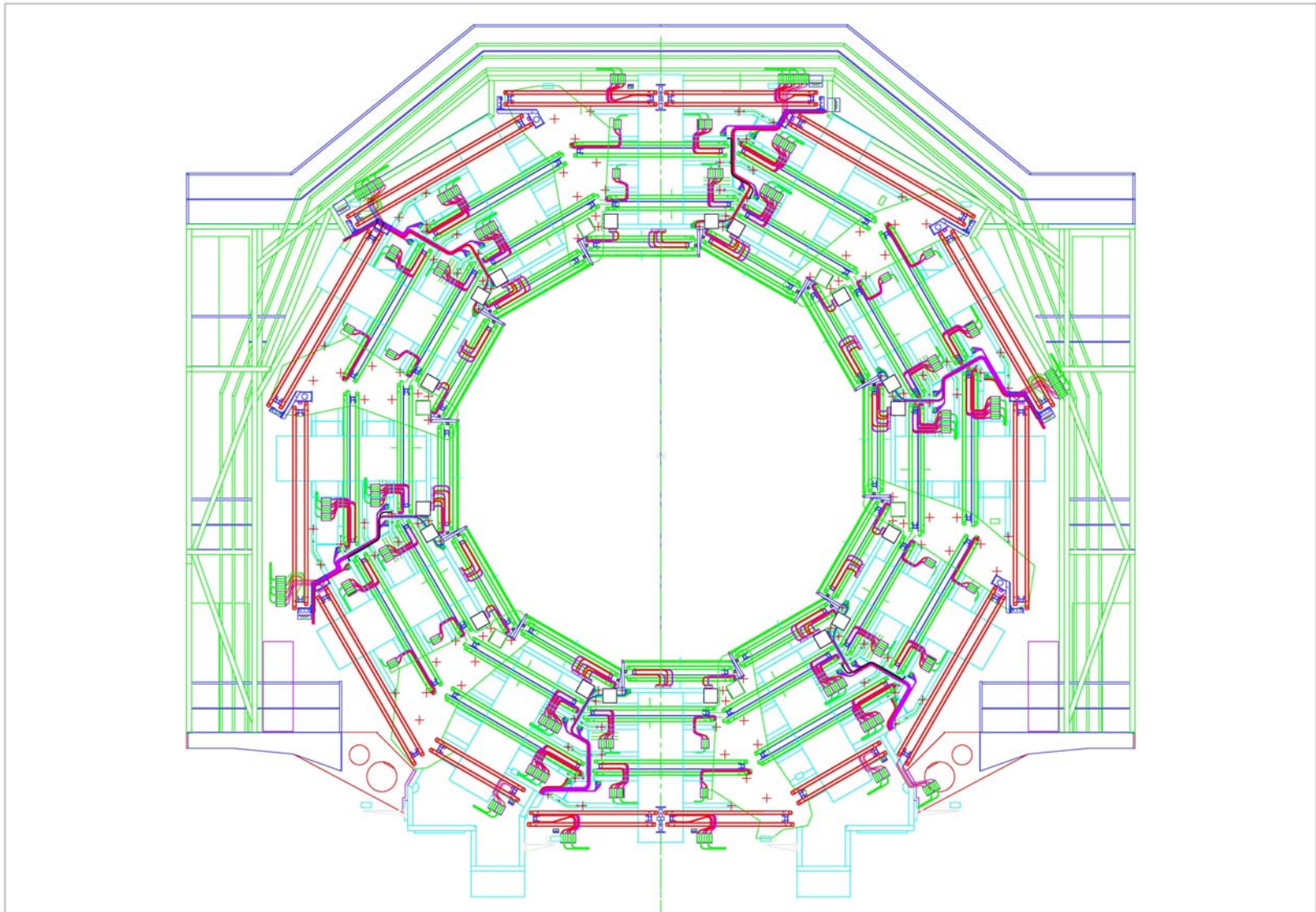


1. RADIAL CABLE TRAY

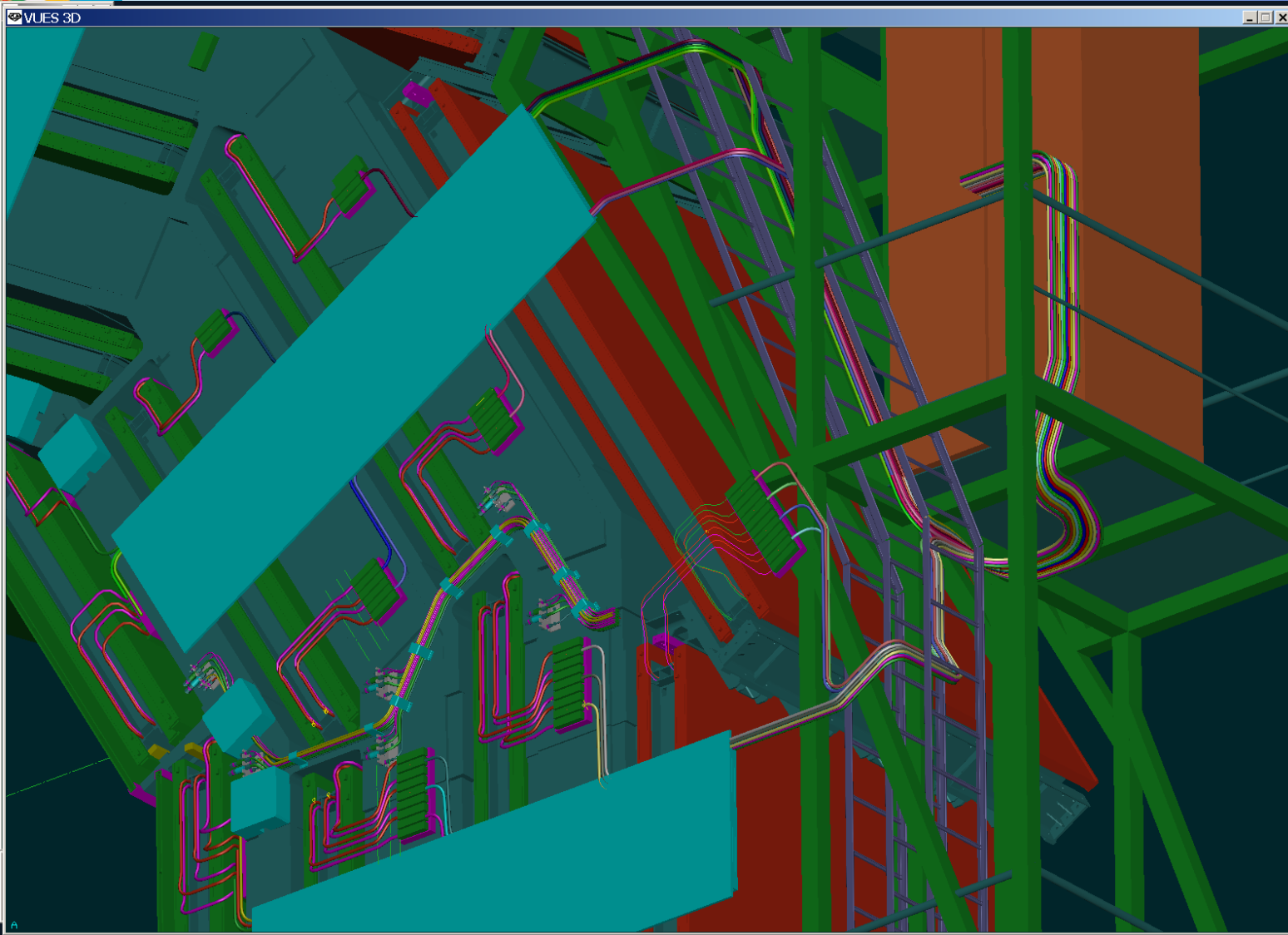
- Fixing of Radial Cable Path.
- Radial Cable tray Cooling Cover.

2. MB1 Supports Production

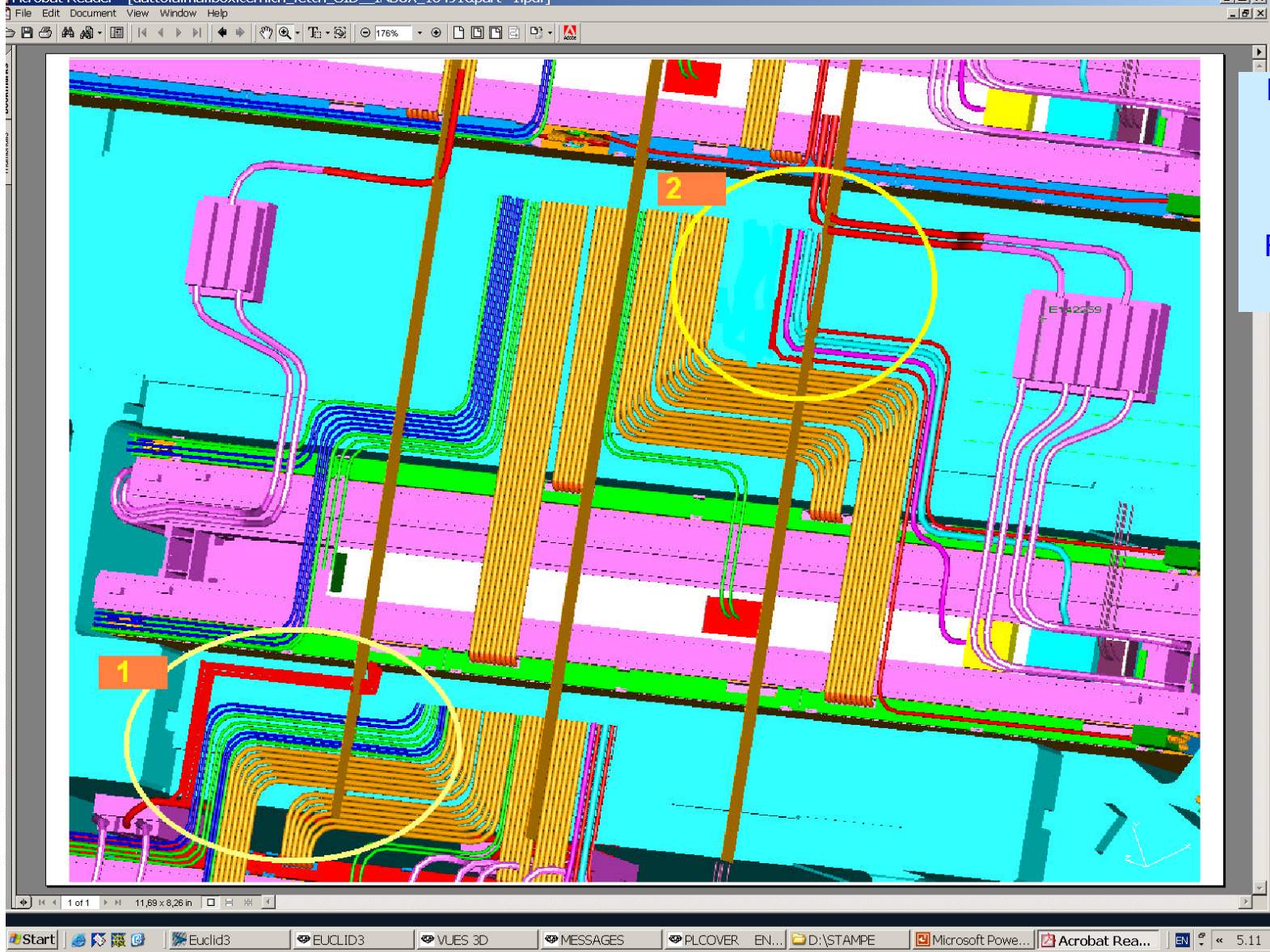
MB Services on wheel 1



HVg layout. Wheel 1, Balcony 1. (I)

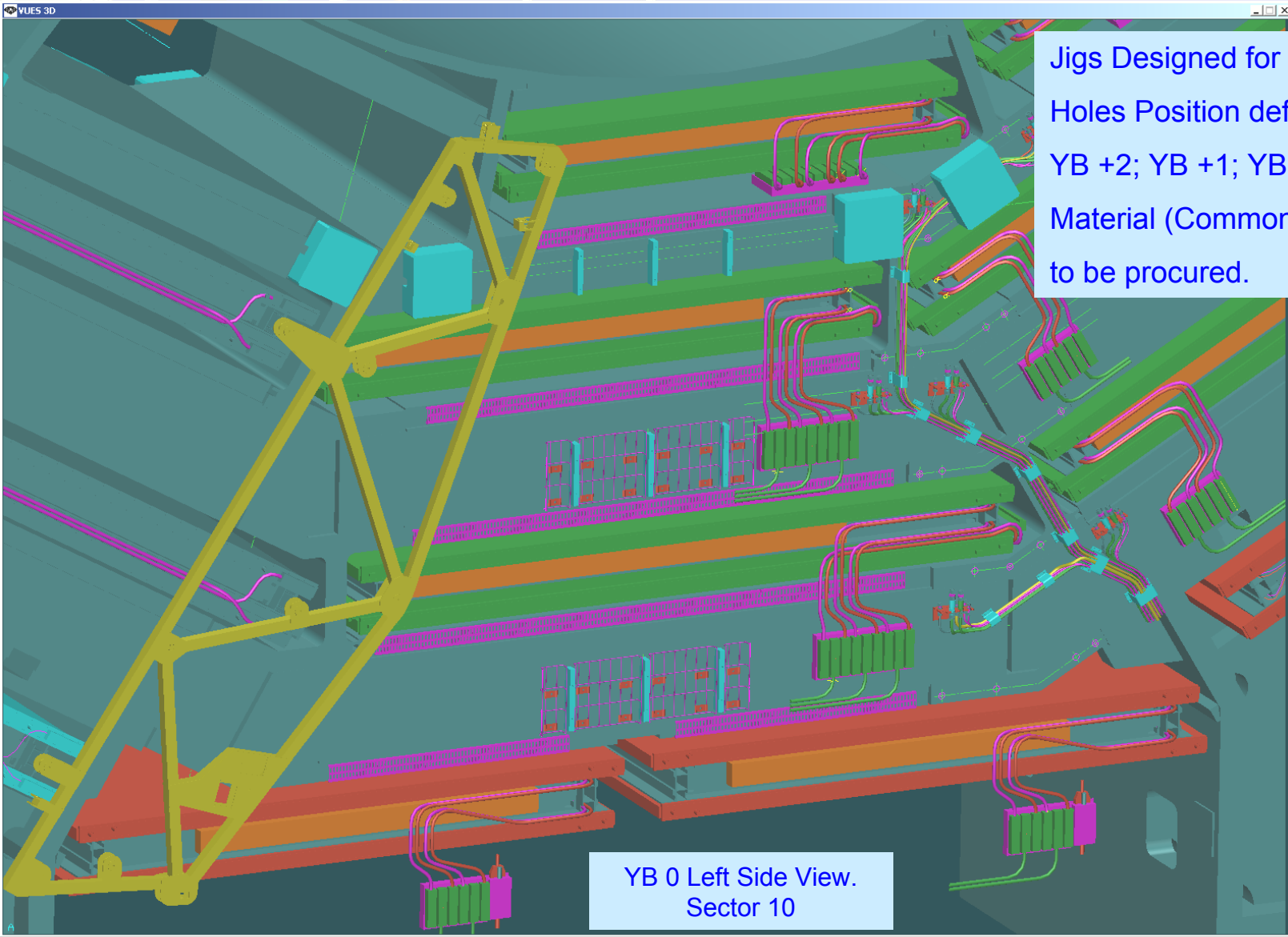


DT-RPC CABLING.



DT-RPC Cabling.
(In Progress)
L. Roscilli
(INFN_Na)
F. Montecassiano
D. Dattola

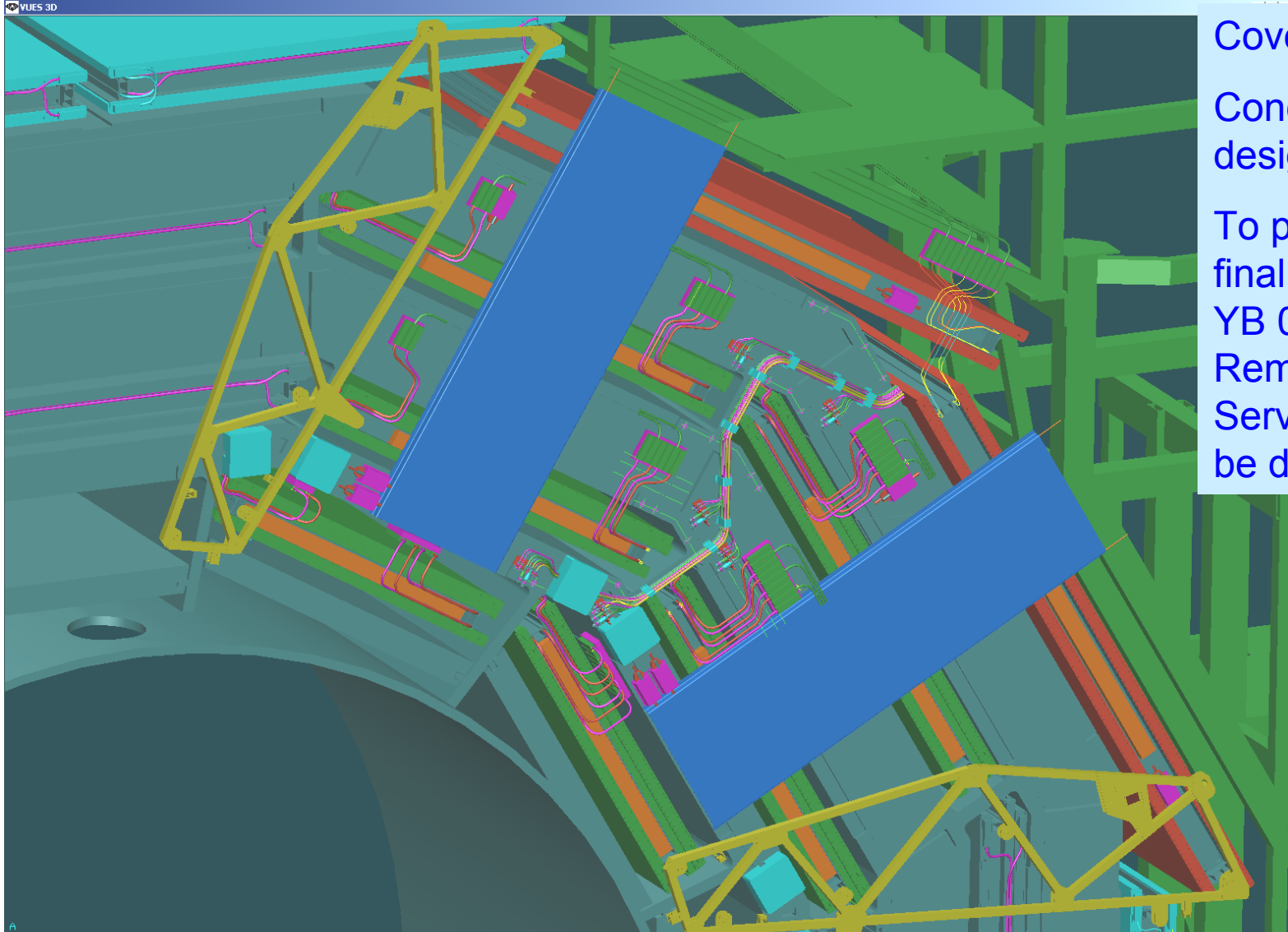
Fixing of Radial Cable Path



Jigs Designed for all the YB.
Holes Position defined for:
YB +2; YB +1; YB 0.
Material (Common Steel ?)
to be procured.

YB 0 Left Side View.
Sector 10

Radial Cable Tray Cooling Cover.

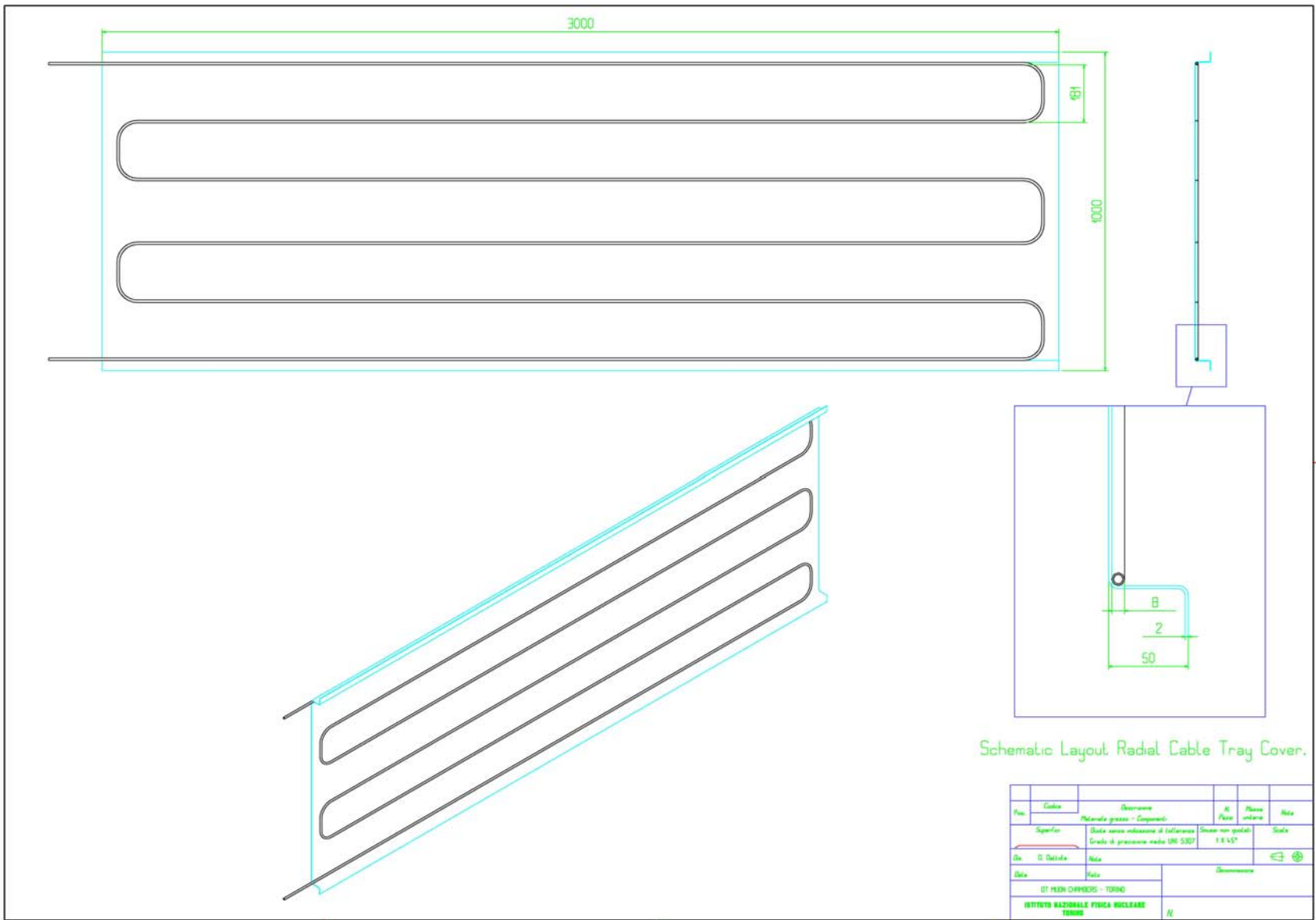


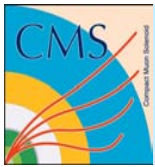
Cover design.

Conceptual design stage.

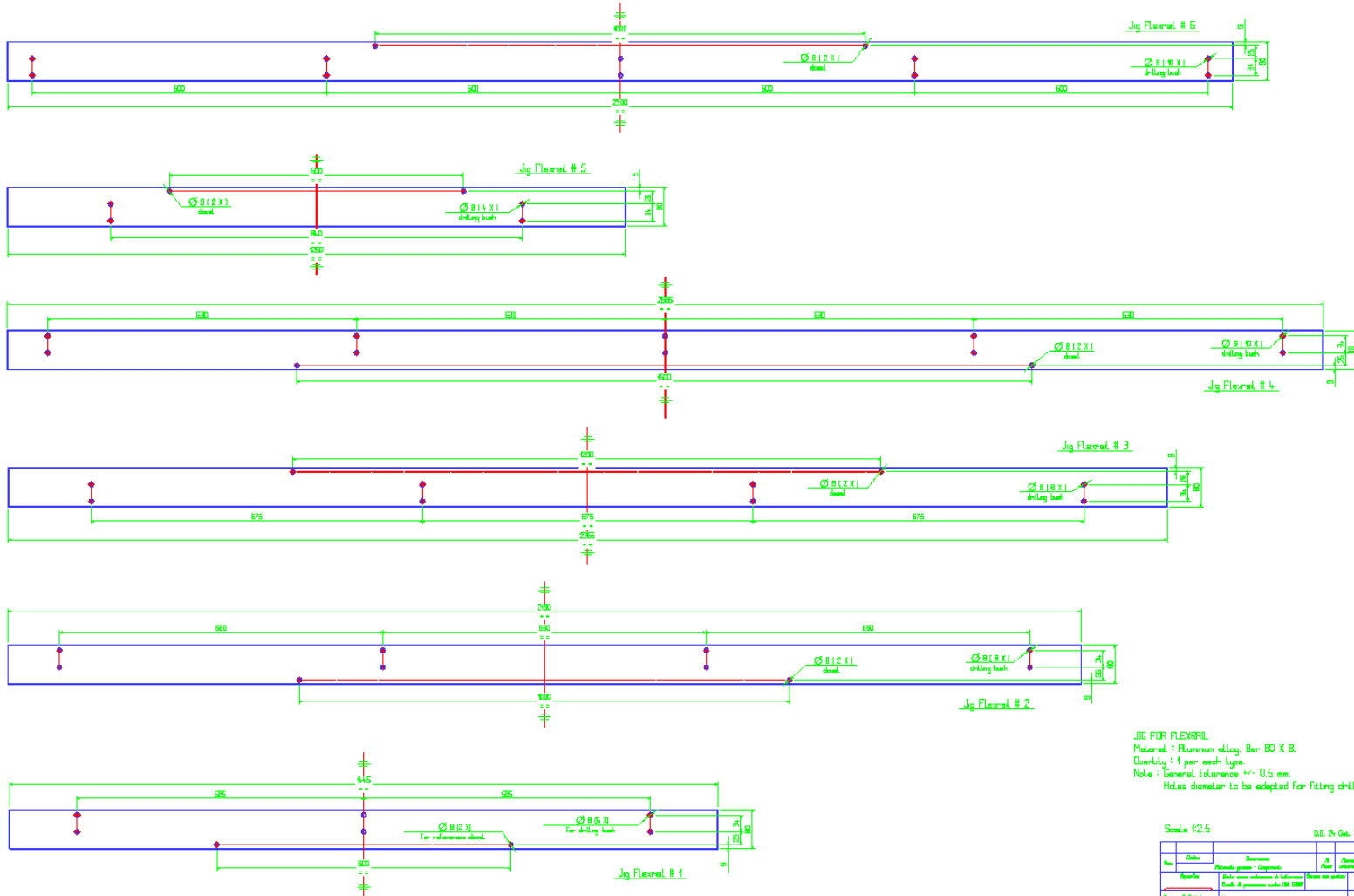
To proceed with final design, for YB 0, layout of Removable Services should be defined.

Radial Cable Tray Cooling Cover Drawing





Flexrails Jig



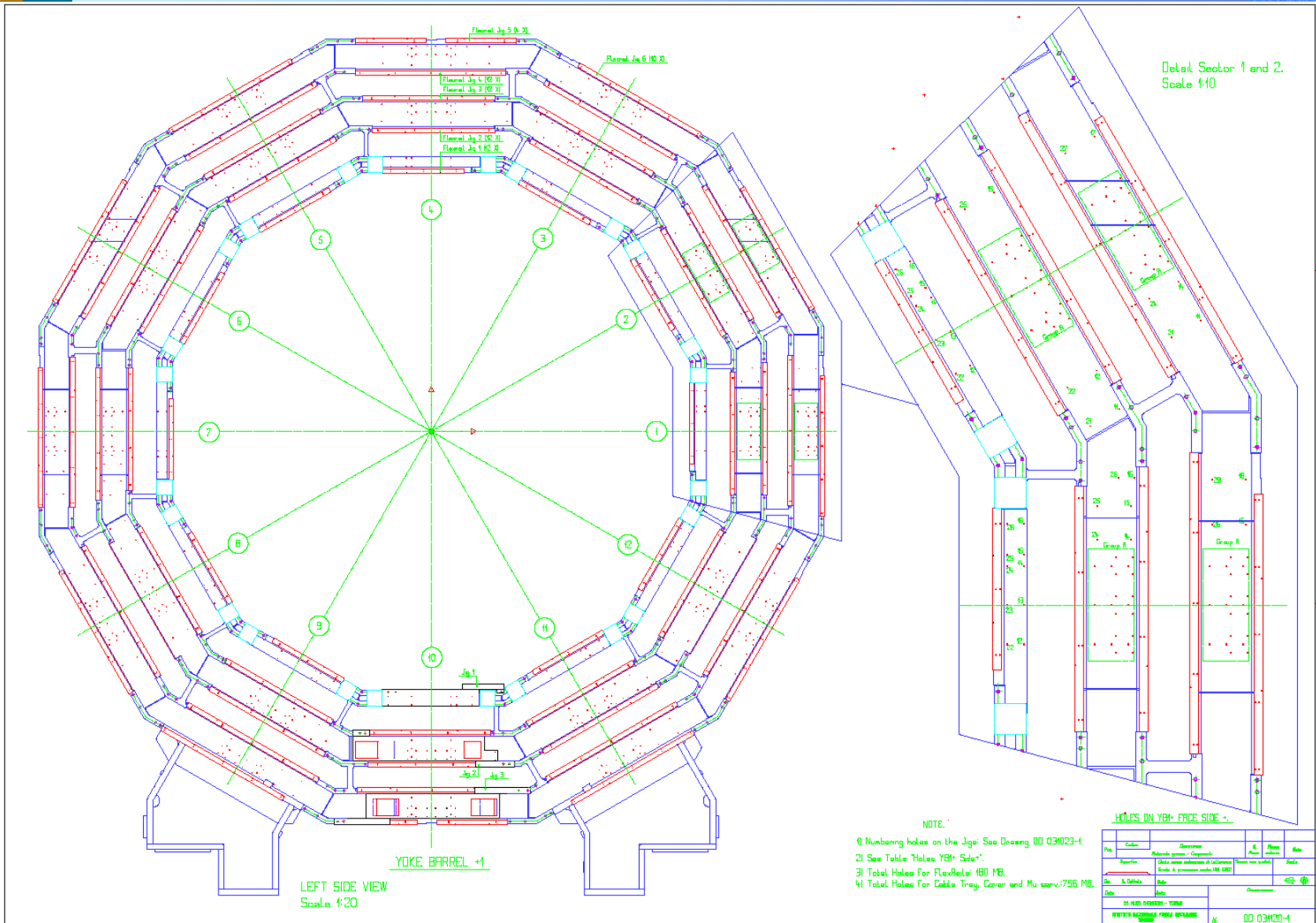
JIG FOR FLEXRAIL
 Material : Aluminum alloy, Bar 80 X 8.
 Quantity : 1 per each type.
 Note : General tolerance +/- 0.5 mm.
 Hole diameter to be adopted for fitting drilling bush.

Scale: 1:2.5

D.D. N. 003

Rev.	Order	Description	Quantity	Material	Notes
01	001	Aluminum alloy - 80x8	1	Al 80x8	
02	002	Drilling bush	1	Al 80x8	
03	003	Drilling bush	1	Al 80x8	
04	004	Drilling bush	1	Al 80x8	
05	005	Drilling bush	1	Al 80x8	
06	006	Drilling bush	1	Al 80x8	
07	007	Drilling bush	1	Al 80x8	
08	008	Drilling bush	1	Al 80x8	
09	009	Drilling bush	1	Al 80x8	
10	010	Drilling bush	1	Al 80x8	
11	011	Drilling bush	1	Al 80x8	
12	012	Drilling bush	1	Al 80x8	
13	013	Drilling bush	1	Al 80x8	
14	014	Drilling bush	1	Al 80x8	
15	015	Drilling bush	1	Al 80x8	
16	016	Drilling bush	1	Al 80x8	
17	017	Drilling bush	1	Al 80x8	
18	018	Drilling bush	1	Al 80x8	
19	019	Drilling bush	1	Al 80x8	
20	020	Drilling bush	1	Al 80x8	
21	021	Drilling bush	1	Al 80x8	
22	022	Drilling bush	1	Al 80x8	
23	023	Drilling bush	1	Al 80x8	
24	024	Drilling bush	1	Al 80x8	
25	025	Drilling bush	1	Al 80x8	
26	026	Drilling bush	1	Al 80x8	
27	027	Drilling bush	1	Al 80x8	
28	028	Drilling bush	1	Al 80x8	
29	029	Drilling bush	1	Al 80x8	
30	030	Drilling bush	1	Al 80x8	
31	031	Drilling bush	1	Al 80x8	
32	032	Drilling bush	1	Al 80x8	
33	033	Drilling bush	1	Al 80x8	
34	034	Drilling bush	1	Al 80x8	
35	035	Drilling bush	1	Al 80x8	
36	036	Drilling bush	1	Al 80x8	
37	037	Drilling bush	1	Al 80x8	
38	038	Drilling bush	1	Al 80x8	
39	039	Drilling bush	1	Al 80x8	
40	040	Drilling bush	1	Al 80x8	
41	041	Drilling bush	1	Al 80x8	
42	042	Drilling bush	1	Al 80x8	
43	043	Drilling bush	1	Al 80x8	
44	044	Drilling bush	1	Al 80x8	
45	045	Drilling bush	1	Al 80x8	
46	046	Drilling bush	1	Al 80x8	
47	047	Drilling bush	1	Al 80x8	
48	048	Drilling bush	1	Al 80x8	
49	049	Drilling bush	1	Al 80x8	
50	050	Drilling bush	1	Al 80x8	
51	051	Drilling bush	1	Al 80x8	
52	052	Drilling bush	1	Al 80x8	
53	053	Drilling bush	1	Al 80x8	
54	054	Drilling bush	1	Al 80x8	
55	055	Drilling bush	1	Al 80x8	
56	056	Drilling bush	1	Al 80x8	
57	057	Drilling bush	1	Al 80x8	
58	058	Drilling bush	1	Al 80x8	
59	059	Drilling bush	1	Al 80x8	
60	060	Drilling bush	1	Al 80x8	
61	061	Drilling bush	1	Al 80x8	
62	062	Drilling bush	1	Al 80x8	
63	063	Drilling bush	1	Al 80x8	
64	064	Drilling bush	1	Al 80x8	
65	065	Drilling bush	1	Al 80x8	
66	066	Drilling bush	1	Al 80x8	
67	067	Drilling bush	1	Al 80x8	
68	068	Drilling bush	1	Al 80x8	
69	069	Drilling bush	1	Al 80x8	
70	070	Drilling bush	1	Al 80x8	
71	071	Drilling bush	1	Al 80x8	
72	072	Drilling bush	1	Al 80x8	
73	073	Drilling bush	1	Al 80x8	
74	074	Drilling bush	1	Al 80x8	
75	075	Drilling bush	1	Al 80x8	
76	076	Drilling bush	1	Al 80x8	
77	077	Drilling bush	1	Al 80x8	
78	078	Drilling bush	1	Al 80x8	
79	079	Drilling bush	1	Al 80x8	
80	080	Drilling bush	1	Al 80x8	
81	081	Drilling bush	1	Al 80x8	
82	082	Drilling bush	1	Al 80x8	
83	083	Drilling bush	1	Al 80x8	
84	084	Drilling bush	1	Al 80x8	
85	085	Drilling bush	1	Al 80x8	
86	086	Drilling bush	1	Al 80x8	
87	087	Drilling bush	1	Al 80x8	
88	088	Drilling bush	1	Al 80x8	
89	089	Drilling bush	1	Al 80x8	
90	090	Drilling bush	1	Al 80x8	
91	091	Drilling bush	1	Al 80x8	
92	092	Drilling bush	1	Al 80x8	
93	093	Drilling bush	1	Al 80x8	
94	094	Drilling bush	1	Al 80x8	
95	095	Drilling bush	1	Al 80x8	
96	096	Drilling bush	1	Al 80x8	
97	097	Drilling bush	1	Al 80x8	
98	098	Drilling bush	1	Al 80x8	
99	099	Drilling bush	1	Al 80x8	
100	100	Drilling bush	1	Al 80x8	

Holes on YB1



- NOTE:
- 1) Numbering holes on the Jigs: See Drawing DD 031023-1.
 - 2) See Table "Holes YB1+ Side".
 - 3) Total Holes For Flexfield: 180 MB.
 - 4) Total Holes For Cable Tray, Cover and Mu serv.: 756 MB.

Holes on YB1+ FADE SIDE ->

Pos.	Code	Descrizione	Al.	Area	Area
Spazio		Alcune zone sono di competenza			
Str.	in Definito	Chiedi prima autorizzazione di intervento			
Stato		Chiedi la permesso scritto dal SAEI			
DI NERI DIVISIONE - TORINO IDENTITÀ ACCERTATA PRIMA INCARICARE DD 031023-1					