



- ◆ The new, local data repository
- ◆ Data Analysis of QC steps during mechanical production
 - Wire Position, sigma distribution
 - Wire Tension, sigma distribution
- ◆ Oxygen measurement
- ◆ Cosmics data taking & Noise



Data Storage in Aachen



Netscape: Index of /~dbac/

File Edit View Go Communicator Help

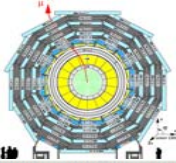
Bookmarks Netsite: <http://www.physik.rwth-aachen.de/~dbac/> What's Related

SL_ph1_001/	29-May-02 22:21	2K
SL_ph1_004/	16-May-02 16:49	1K
SL_ph2_003/	29-May-02 22:20	1K
SL_ph2_006/	16-May-02 16:50	1K
SL_ph1_007/	30-May-02 19:56	2K
SL_ph1_010/	06-Jun-02 18:55	3K
SL_ph1_013/	06-Jun-02 18:56	2K
SL_ph1_016/	05-Jun-02 22:24	2K
SL_ph1_019/	06-Jun-02 18:56	3K
SL_ph1_022/	05-Jun-02 22:26	3K
SL_ph1_025/	05-Jun-02 22:26	4K
SL_ph1_028/	07-Jun-02 17:04	2K
SL_phii_008/	30-May-02 19:56	1K
SL_phii_011/	06-Jun-02 10:45	3K
SL_phii_015/	05-Jun-02 22:28	3K
SL_phii_018/	06-Jun-02 18:56	3K
SL_phii_021/	06-Jun-02 10:47	3K
SL_phii_024/	05-Jun-02 22:29	2K
SL_phii_027/	05-Jun-02 22:30	2K
SL_th_002/	29-May-02 22:22	1K
SL_th_005/	16-May-02 16:49	1K
SL_th_009/	05-Jun-02 22:33	3K
SL_th_012/	05-Jun-02 22:30	3K
SL_th_014/	05-Jun-02 22:30	2K
SL_th_017/	06-Jun-02 16:53	3K
SL_th_020/	06-Jun-02 18:56	3K
SL_th_023/	05-Jun-02 22:32	2K

Local Data Repository at Aachen containing raw data from production and QC

One Directory per SL:

- SL_phi_XXX
- SL_phii_XXX
- SL_th_XXX



Directory Content



Netscape: Index of /~dbac/SL_phi_010/

File Edit View Go Communicator

Bookmarks Netsite: http://www.physik.rwth-aachen.de/~dbac/SL_phi_010/

Index of /~dbac/SL_phi_010/

Name	Last modified	Size	Description
Parent Directory			
SL010 Report 001.pdf	31-May-02 18:16	85K	
SL010 Report 001.txt	31-May-02 18:16	10K	
SL010 Report 001.xls	06-Jun-02 16:53	40K	
SLPHI10_L1_010911aMEAS+	28-May-02 22:46	0K	
SLPHI10_L1_010911aSET+	15-May-02 17:52	1K	
SLPHI10_L2_010917aMEAS+	28-May-02 22:39	1K	
SLPHI10_L2_010917aSET+	28-May-02 22:39	1K	
SLPHI10_L3_010919aMEAS+	28-May-02 22:39	1K	
SLPHI10_L3_010919aSET+	28-May-02 22:39	1K	
SLPHI10_L4_010921aMEAS+	28-May-02 22:39	1K	
SLPHI10_L4_010921aSET+	28-May-02 22:39	1K	
SLPHI_10_L1_frontWire+	06-Jun-02 20:19	24K	
SLPHI_10_L1_rearWireP+	06-Jun-02 20:19	23K	
SLPHI_10_L2_frontWire+	06-Jun-02 20:19	22K	
SLPHI_10_L2_rearWireP+	06-Jun-02 20:19	21K	
SLPHI_10_L3_frontWire+	06-Jun-02 20:19	23K	
SLPHI_10_L3_rearWireP+	06-Jun-02 20:19	23K	
SLPHI_10_L4_frontWire+	06-Jun-02 20:19	23K	
SLPHI_10_L4_rearWireP+	05-Jun-02 22:23	23K	
SLPHI_10_summary.txt	06-Jun-02 20:19	1K	
chamber00_SL_10_layer+	16-May-02 16:21	1K	
chamber00_SL_10_layer+	16-May-02 16:21	1K	

Kind of files in every SL directory:

- SL010_Report_xxx.PDF Noise data summary sheet
- SL010_Report_xxx.txt Noise data plain text (no header, no summary)
- SL010_Report_xxx.xls Excel table + plot
- SLPHI10_L1_010911aMEAS.dat Raw data Wire tension
- SLPHI10_L1_010911aSET.dat Wire tension settings
- reso_SLPhi_10_L_1_010911.ps Wire tension sigma plot (only sigma)
- tens_SLPhi_10_L_1_010911.ps Wire tension summary plot (tensions + sigma)
- tens_histo_SLPhi_10_L_1_010911.ps Wire tension plot (only tensions)
- chamber00_SL%2010_layer03_diodes_before_010911_102611.dat
- chamber00_SL%2010_layer03_diodes_after_010911_102611.dat
- Raw data diode measurement
- chamber00_SL010_layer01_front_010911_102611.dat
- chamber00_SL010_layer01_rear_010911_102611.dat
- Raw data wire positions incl. replaced single wires and calibration
- SLPHI_10_L1_frontWirePos.ps Wire position plot
- SLPHI_10_L1_rearWirePos.ps Wire position plot

still coming: planarity, gastightness

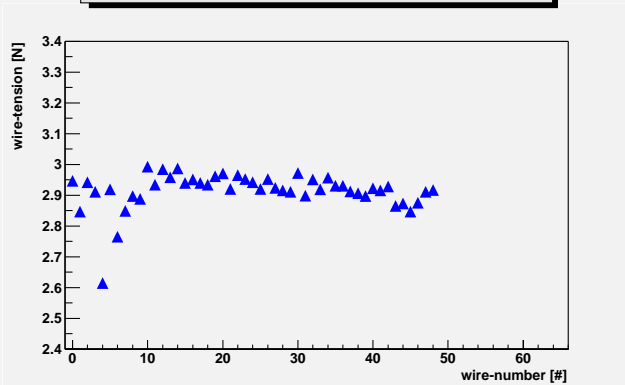
with e.g. 010911 = date 11.09.2001
 102611 = time 11:26:10
 L1 - L4 = layer number
 xxx = version number



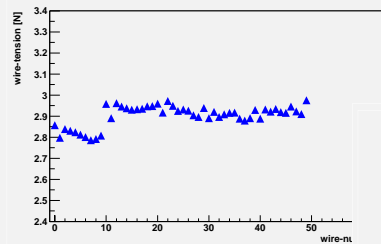
Final Plots from WTM Analysis



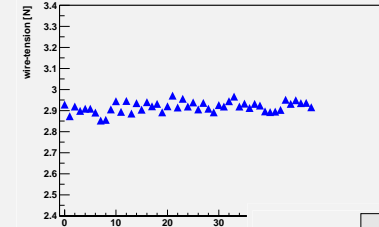
wire-tension-measurement SL Phi 16 L 1



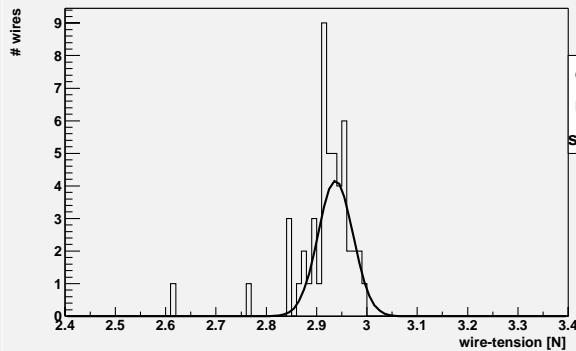
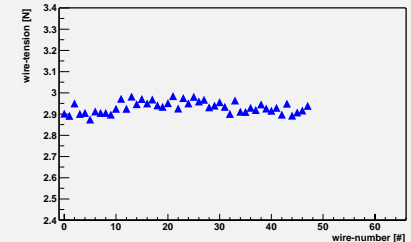
wire-tension-measurement SL Phi 16 L 2



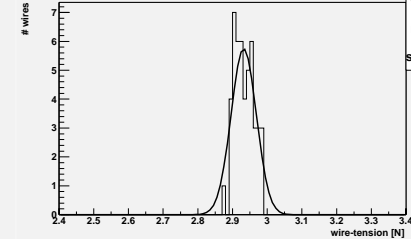
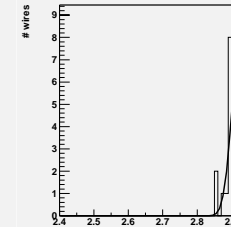
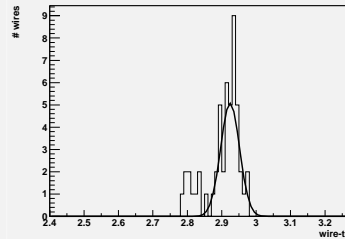
wire-tension-measurement SL Phi 16 L 3



wire-tension-measurement SL Phi 16 L 4



chi²: 14.5179
mean: 2.9375 N
sigma: 0.0346 N



chi²: 3.3044
mean: 2.9322 N
sigma: 0.0363 N

One page with plots per layer, containing tensions and sigma (plus fit).

Data card file in preparation.

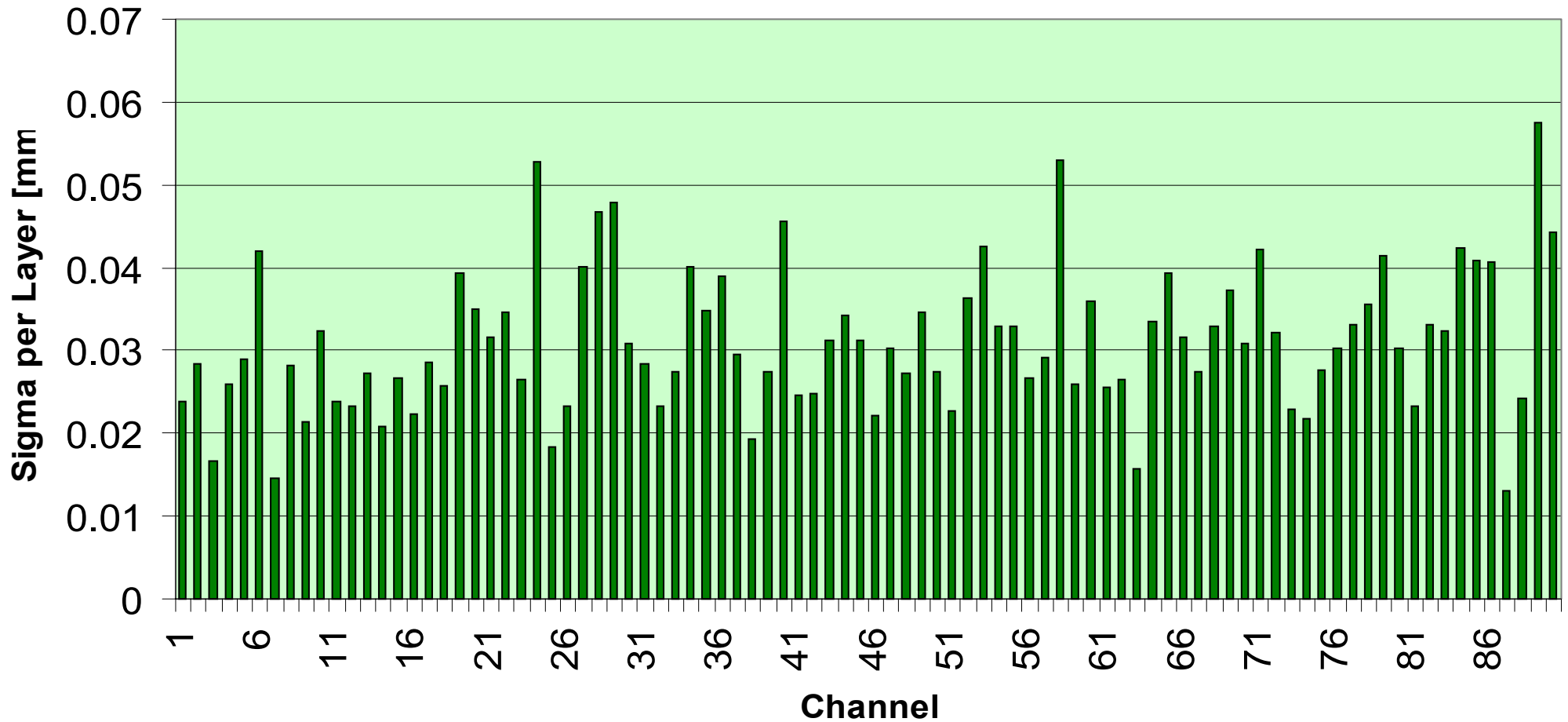


Wire Tension



Wire Tension - Sigma Distribution

SL 001-029

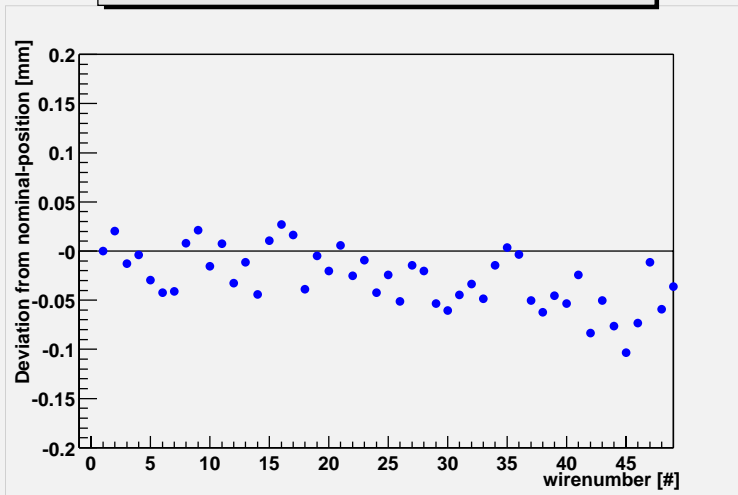




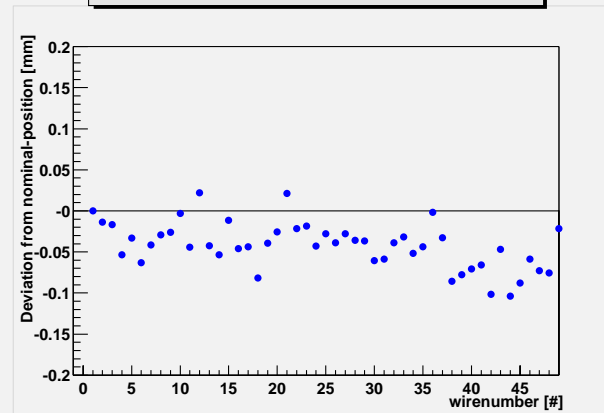
Final Wire Position plots



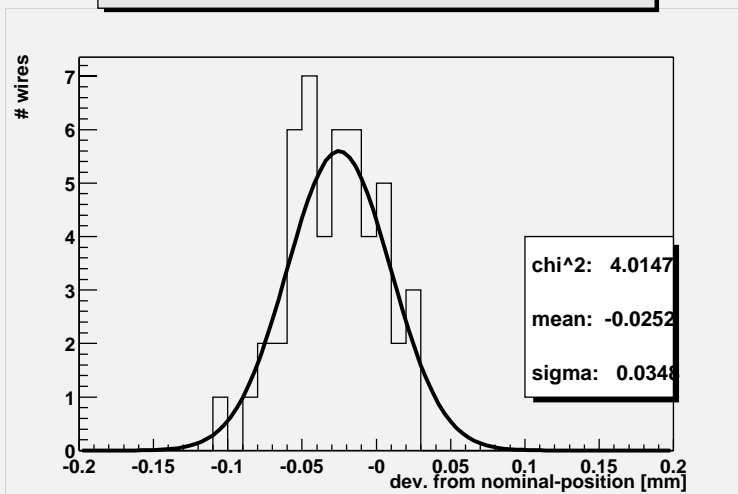
SLPHIINV_11_L1_front



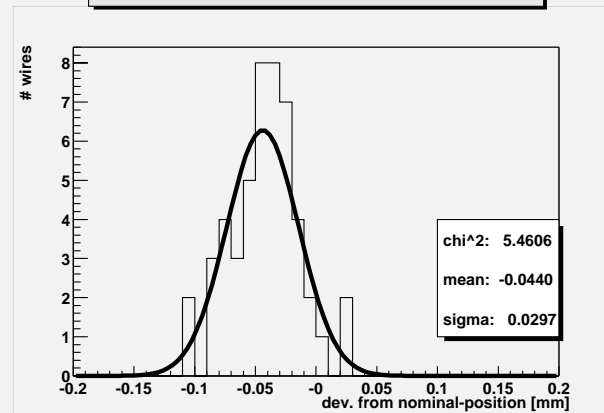
SLPHIINV_11_L1_rear



SLPHIINV_11_L1_front



SLPHIINV_11_L1_rear



Two pages with plots per layer (HV+FE side), containing deviation from nominal position and sigma (plus fit).

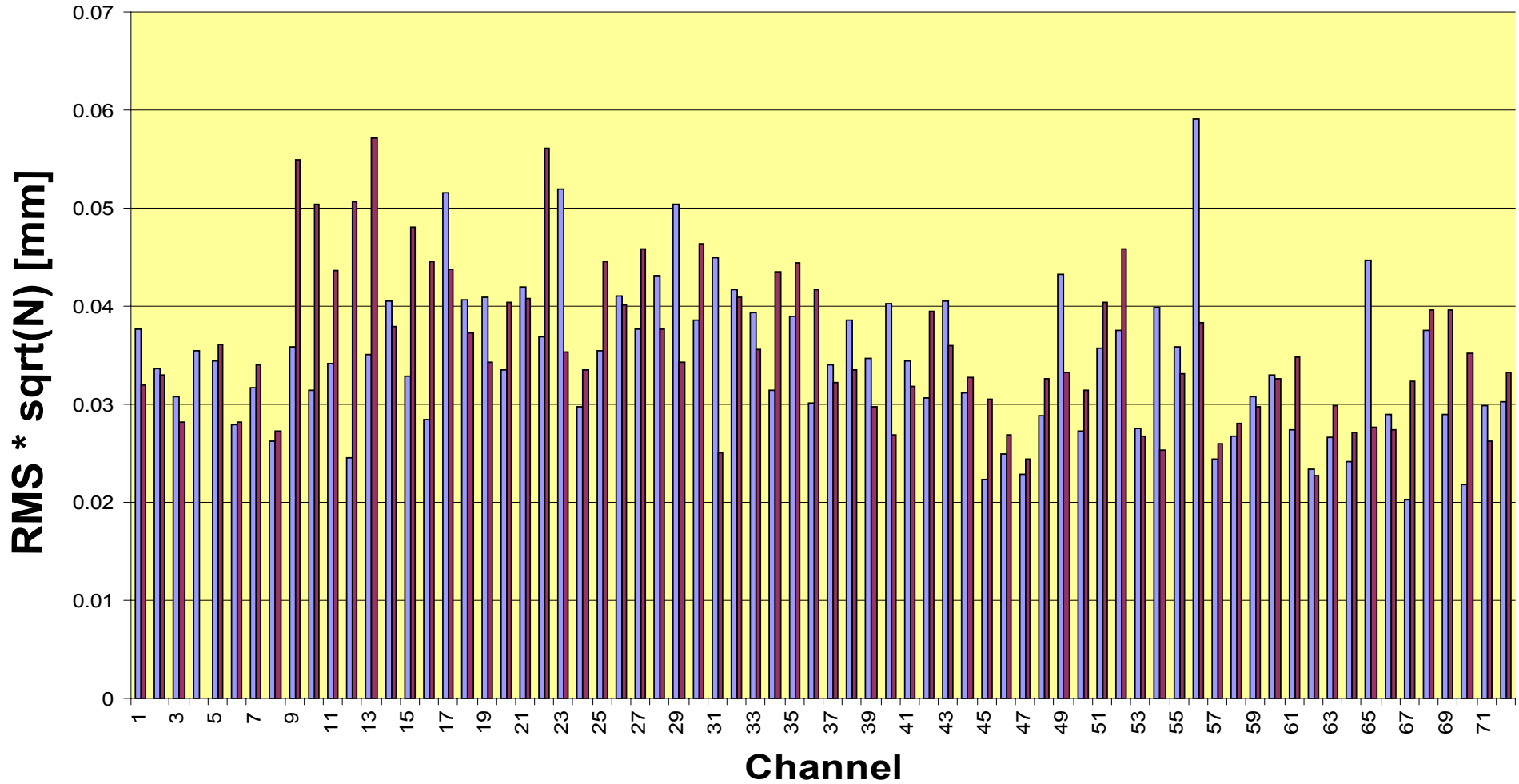
Data card file exists in same directory.



Wire Position Overview

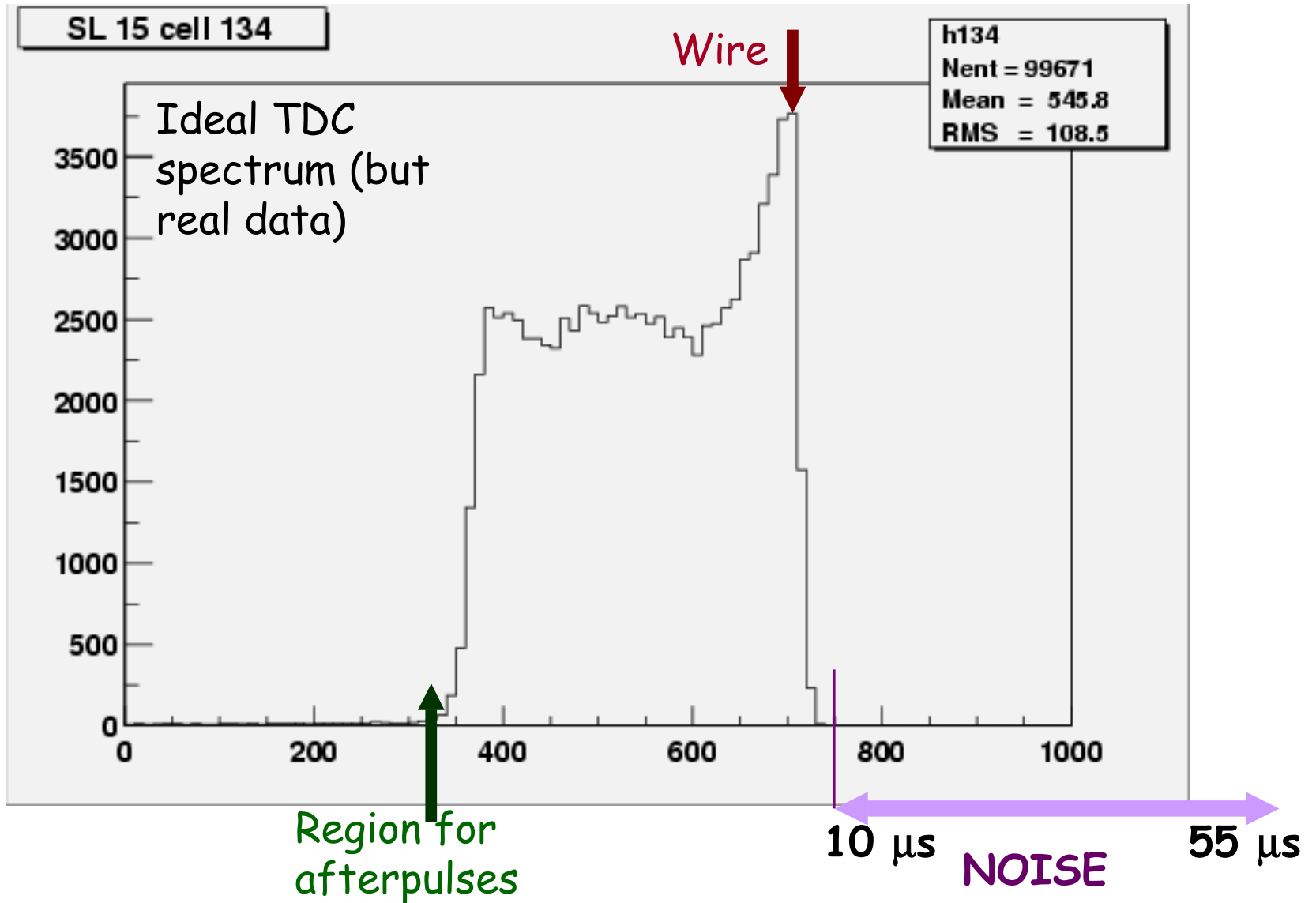


Wire Position Distribution of Sigma





Noise



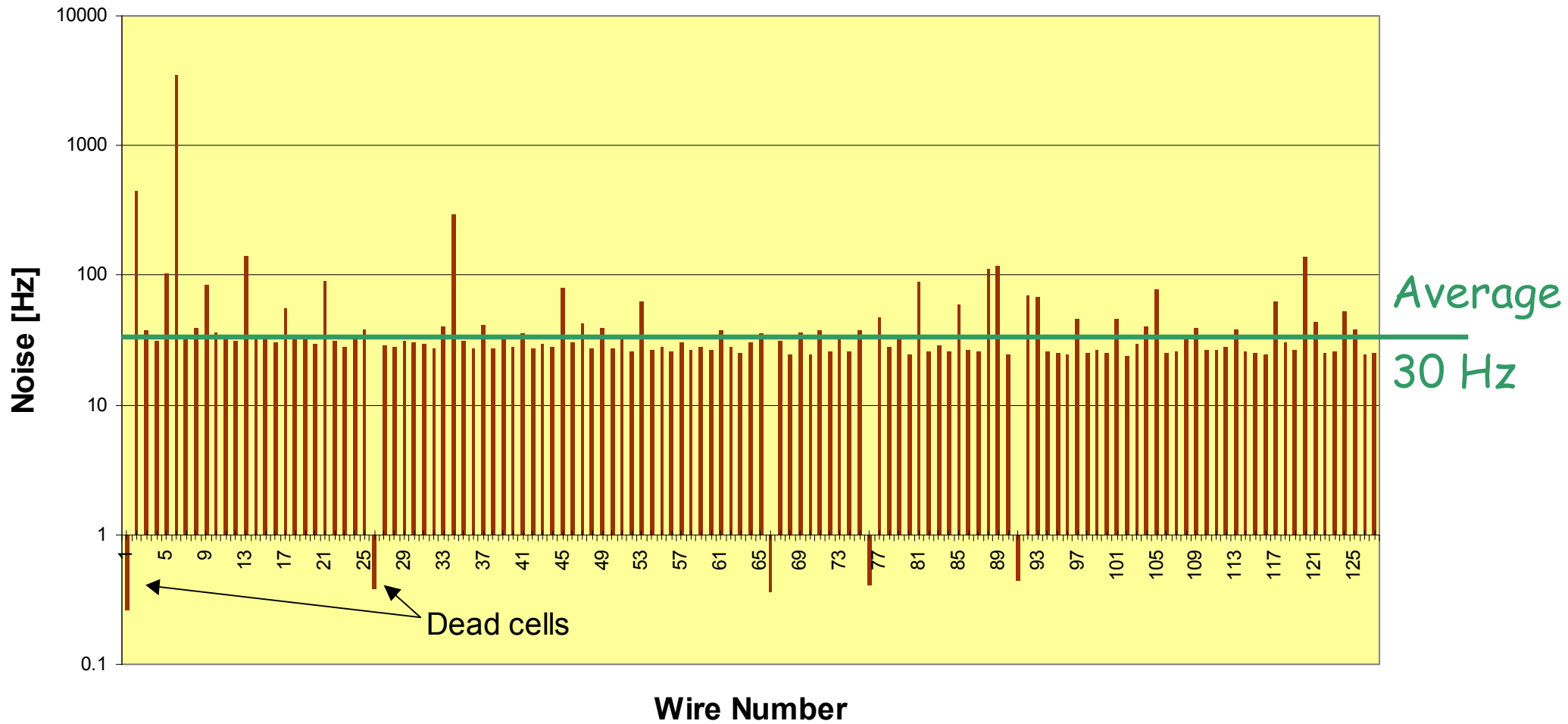
-> see plots

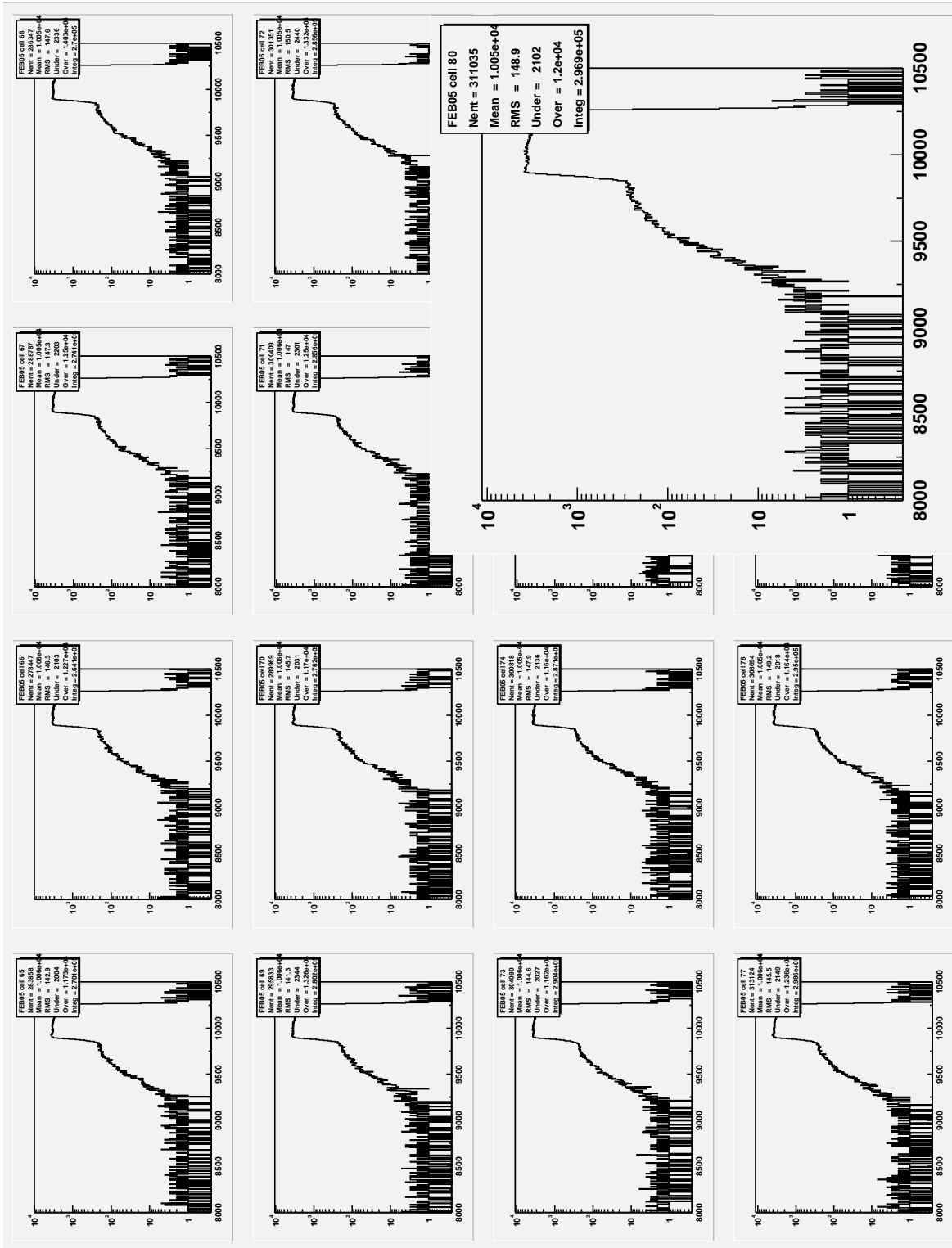


Noise



SL 013 (phi) Noise Distribution



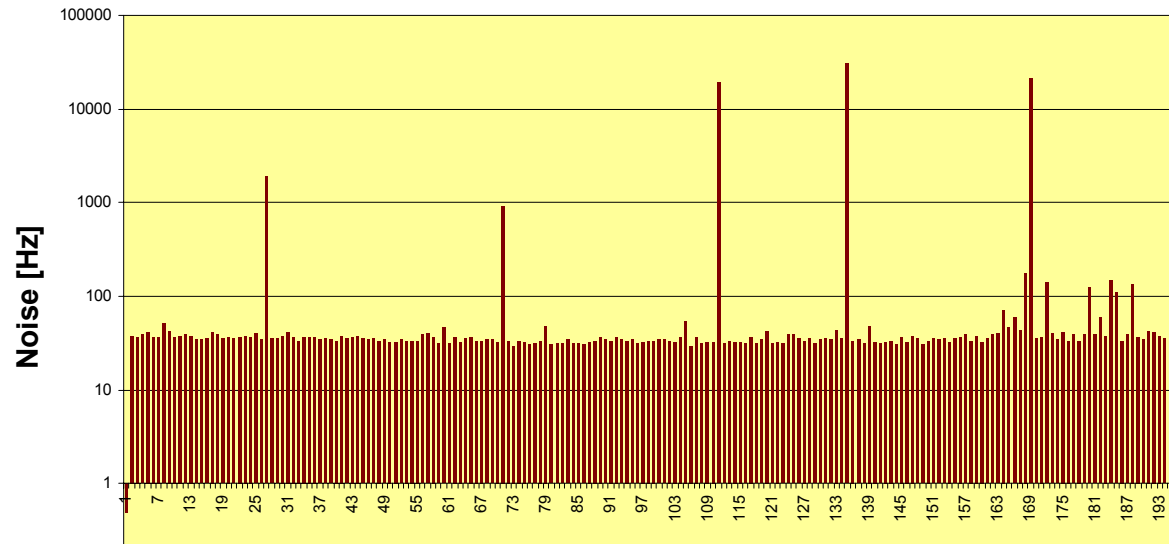




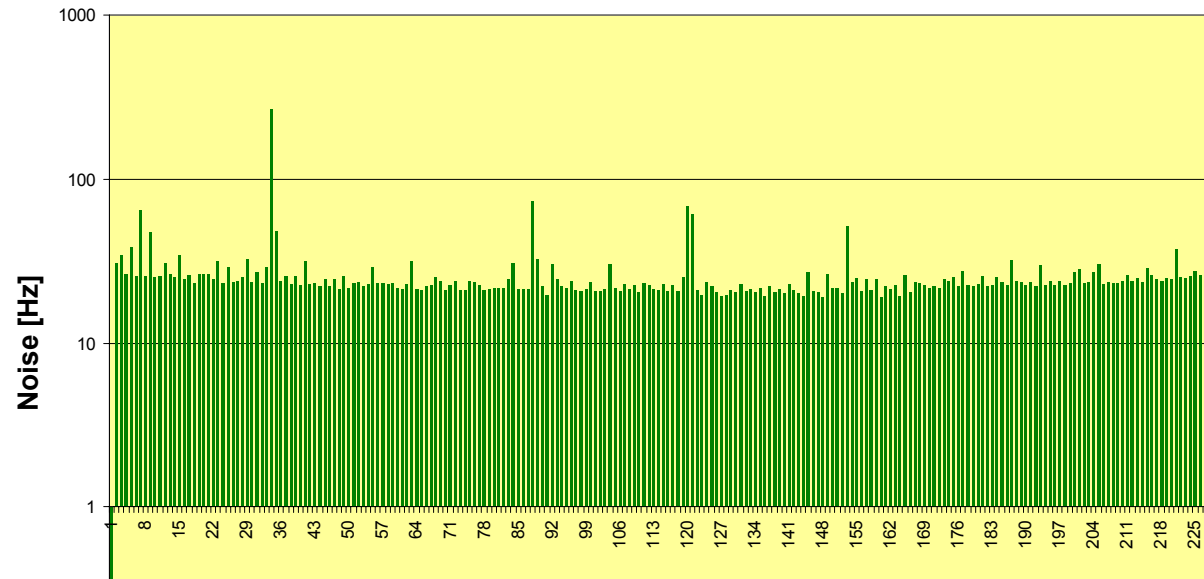
Noise



SL 010 (phi) Noise Distribution



SL 020 (theta) Noise Distribution





Noise first 6 SL



Noise Distribution SL 010, 013, 017, 018, 019, 020

