

# **CMS Padova muon chamber repository for production and test data**

Paolo Checchia, Marina Passaseo  
INFN Padova

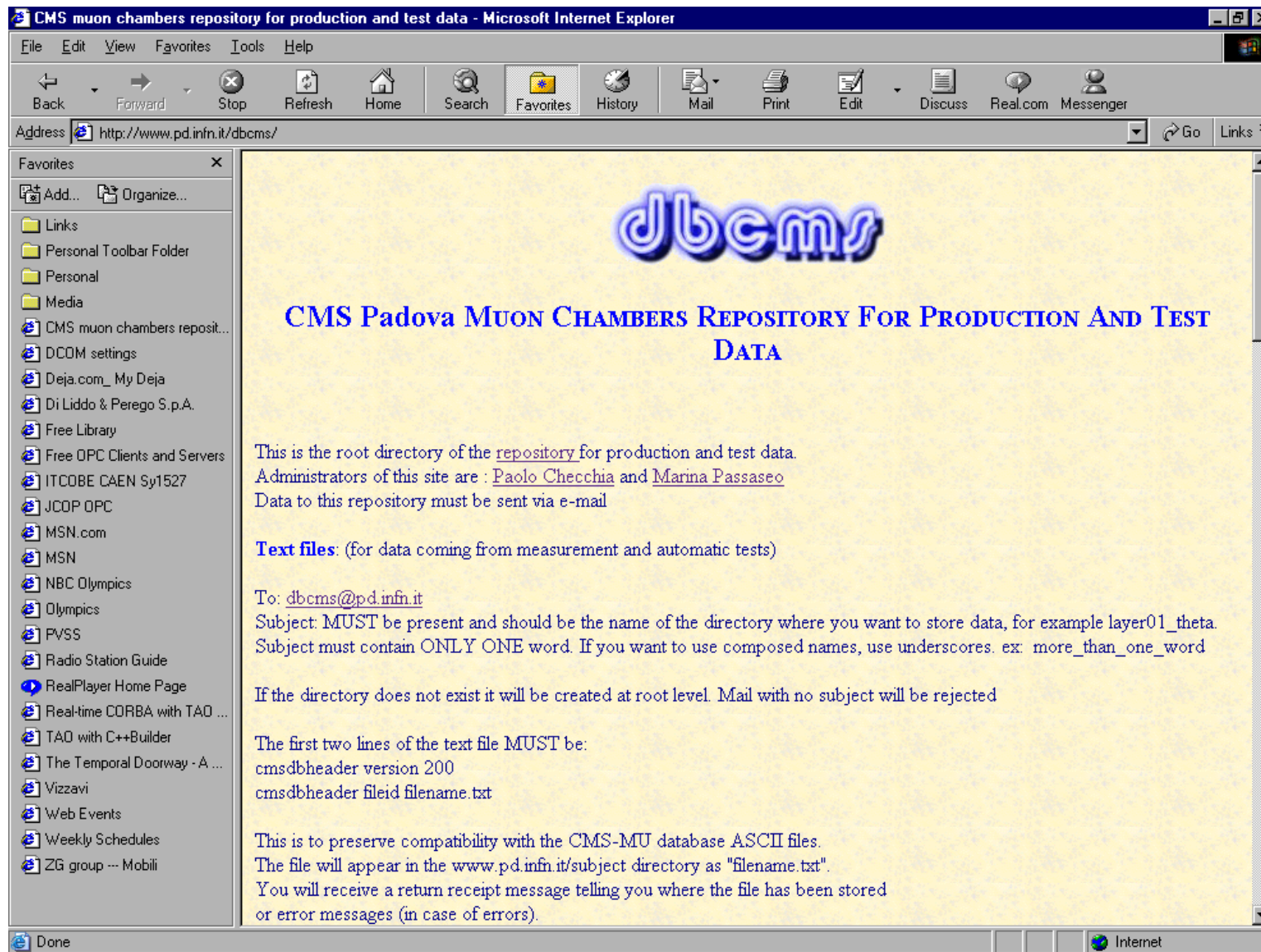
# Data Organization

- Data are organized in directories
- Root directory contains chambers and the objects currently under construction or test.
- Each directory contains data for the object itself and data directories for the objects it is composed of
- Directories naming: for layer, sl and chambers: object name + building order number. For other objects: name+barcode
- Layer, superlayer and chamber: directories contain a file with the barcode
- Data coming from measurements and tests are recorded in ASCII files
- Analysis data is in ASCII files and pictures files

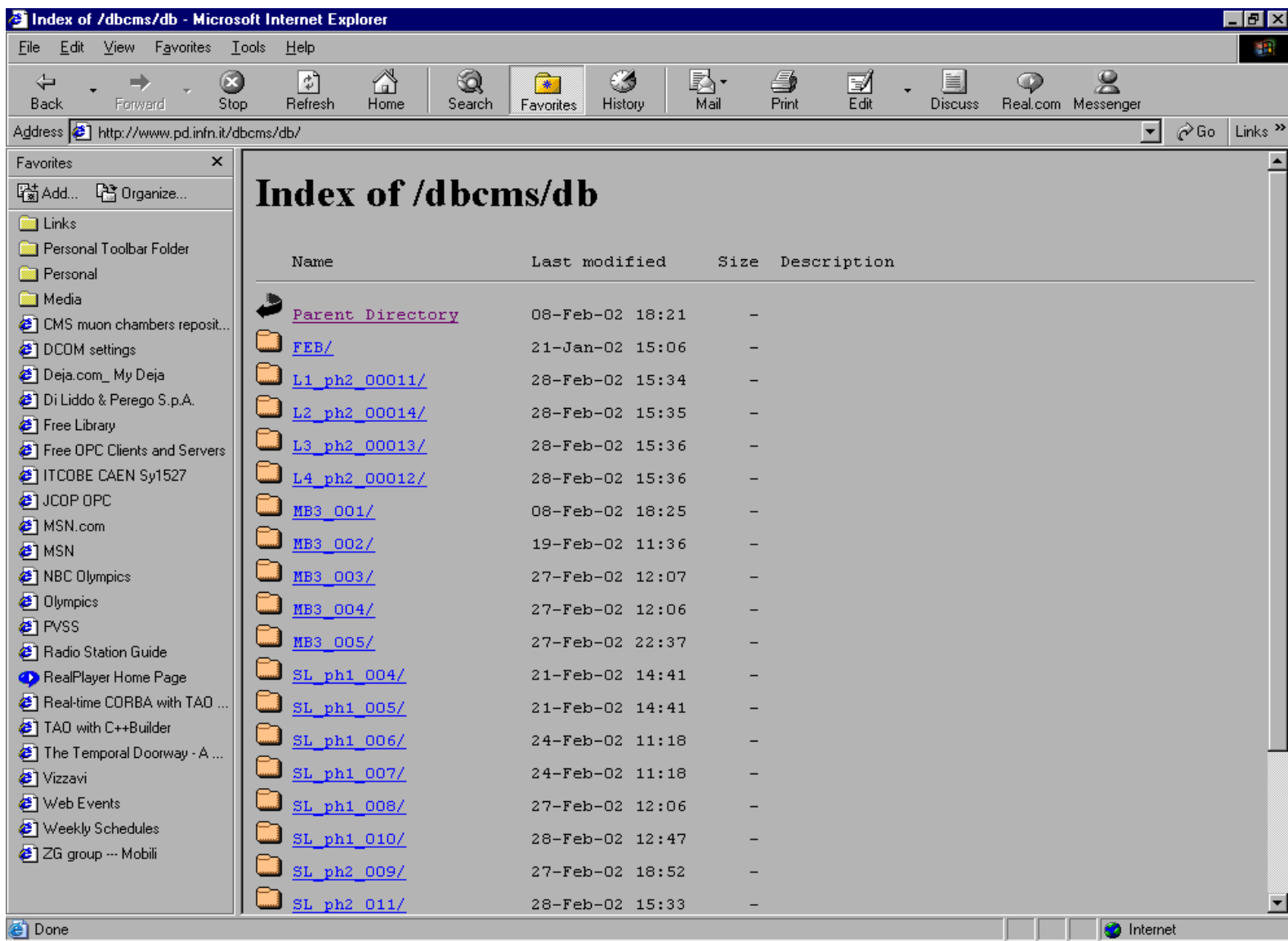
# Data access & data writing

- Data repository is on a web server
- Any browser can be used to look at the data
- The browser itself contains the software to view pictures files.
- Wget command can be used to retrieve files from other computers
- Data (text or binary files) are sent via email.
- From UNIX on the command line or with any mailer.
- From WINDOWS using the SendToDb program or with any mailer.
- Mail are interpreted by an automatic process on the web server and saved in the data repository
- Data backup is performed every night.

# Web Page



















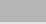


# Root Directory for data



Index of /dbcms/db - Microsoft Internet Explorer





Address: <http://www.pd.infn.it/dbcms/db/>

## Index of /dbcms/db

Name	Last modified	Size	Description
 <a href="#">Parent Directory</a>	08-Feb-02 18:21	-	
 <a href="#">FEB/</a>	21-Jan-02 15:06	-	
 <a href="#">L1_ph2_00011/</a>	28-Feb-02 15:34	-	
 <a href="#">L2_ph2_00014/</a>	28-Feb-02 15:35	-	
 <a href="#">L3_ph2_00013/</a>	28-Feb-02 15:36	-	
 <a href="#">L4_ph2_00012/</a>	28-Feb-02 15:36	-	
 <a href="#">MB3_001/</a>	08-Feb-02 18:25	-	
 <a href="#">MB3_002/</a>	19-Feb-02 11:36	-	
 <a href="#">MB3_003/</a>	27-Feb-02 12:07	-	
 <a href="#">MB3_004/</a>	27-Feb-02 12:06	-	
 <a href="#">MB3_005/</a>	27-Feb-02 22:37	-	
 <a href="#">SL_ph1_004/</a>	21-Feb-02 14:41	-	
 <a href="#">SL_ph1_005/</a>	21-Feb-02 14:41	-	
 <a href="#">SL_ph1_006/</a>	24-Feb-02 11:18	-	
 <a href="#">SL_ph1_007/</a>	24-Feb-02 11:18	-	
 <a href="#">SL_ph1_008/</a>	27-Feb-02 12:06	-	
 <a href="#">SL_ph1_010/</a>	28-Feb-02 12:47	-	
 <a href="#">SL_ph2_009/</a>	27-Feb-02 18:52	-	
 <a href="#">SL_ph2_011/</a>	28-Feb-02 15:33	-	

# Chamber directory

The screenshot shows a Microsoft Internet Explorer window with the title "Index of /dbcms/db/MB3\_001 - Microsoft Internet Explorer". The address bar contains the URL "http://www.pd.infn.it/dbcms/db/MB3\_001/". The main content area displays a directory listing with the following table:

Name	Last modified	Size	Description
 <a href="#">Parent Directory</a>	28-Feb-02 15:36	-	
 <a href="#">SL_ph1_002/</a>	20-Feb-02 16:11	-	
 <a href="#">SL_ph1_003/</a>	20-Feb-02 16:22	-	
 <a href="#">SL_th_001/</a>	20-Feb-02 16:28	-	

The left sidebar shows a "Favorites" list with various web links. The status bar at the bottom indicates "Internet".

# Superlayer directory

Index of /dbcms/db/MB3\_001/SL\_ph1\_002

Name	Last modified	Size	Description
<a href="#">Parent Directory</a>	08-Feb-02 18:25	-	
<a href="#">351020200500002.txt</a>	22-Jan-02 19:19	1k	
<a href="#">L1_ph1_00002/</a>	23-Jan-02 19:26	-	
<a href="#">L2_ph1_00002/</a>	23-Jan-02 19:26	-	
<a href="#">L3_ph1_00002/</a>	23-Jan-02 19:26	-	
<a href="#">L4_ph1_00002/</a>	23-Jan-02 20:15	-	
<a href="#">W_summary.gif</a>	29-Jan-02 18:19	13k	
<a href="#">W_summary.txt</a>	20-Feb-02 16:11	1k	
<a href="#">rif2_FE_2001Jun28_111..</a>	23-Jan-02 18:24	1k	
<a href="#">rif2_HV_2001Jun28_112..</a>	23-Jan-02 18:24	1k	
<a href="#">rif_FE_2001Jun28_1043..</a>	23-Jan-02 18:22	1k	
<a href="#">rif_HV_2001Jun28_1120..</a>	23-Jan-02 18:22	1k	
<a href="#">temp_phi_02.txt</a>	23-Jan-02 18:25	1k	

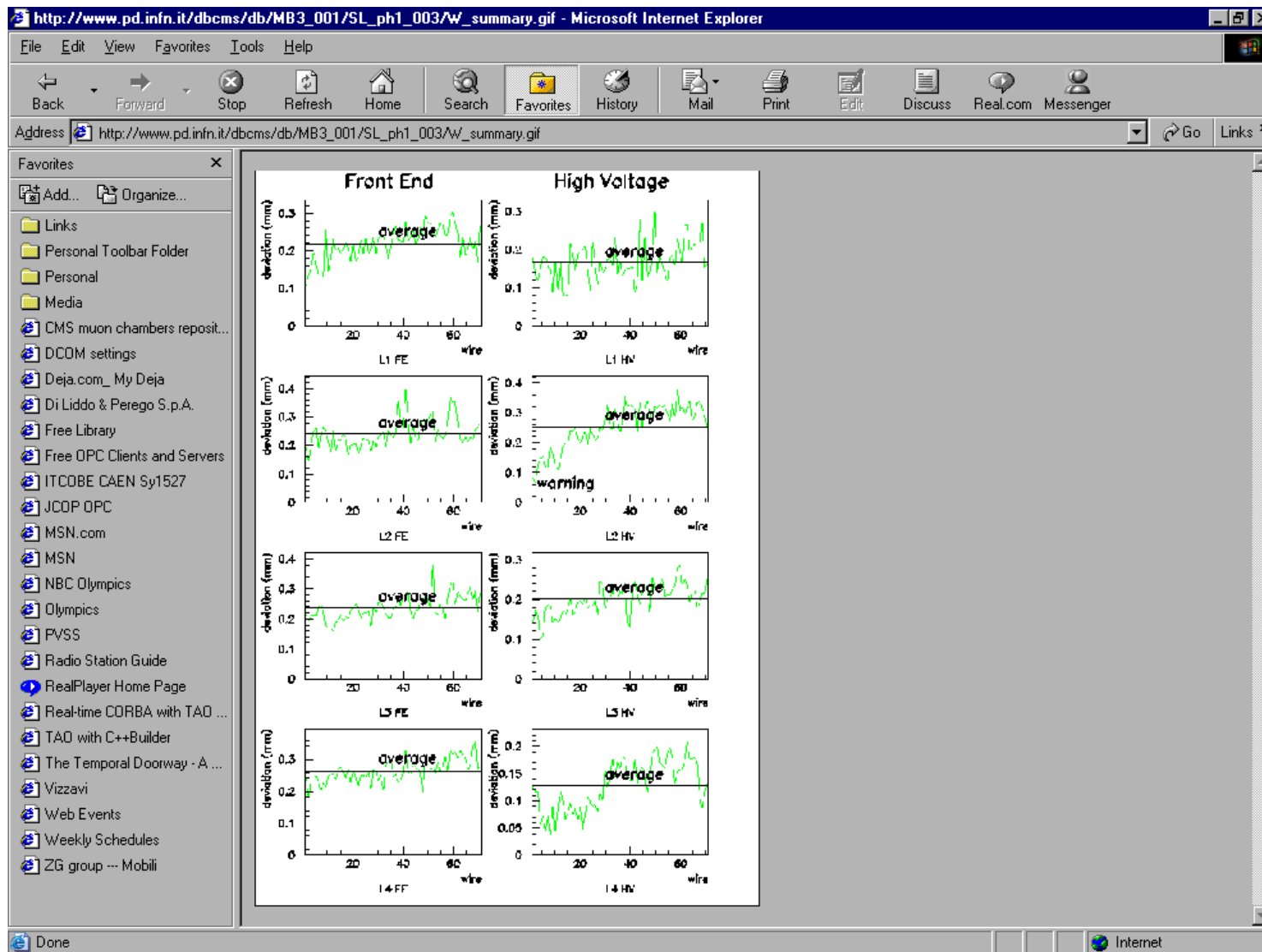
# Layer Directory

Index  
of /dbcms/db/MB3\_001/SL\_ph1\_002/L1\_ph1\_00002

Name	Last modified	Size	Description
<a href="#">Parent Directory</a>	20-Feb-02 16:11	-	
<a href="#">W_FE.txt</a>	23-Jan-02 12:31	2k	
<a href="#">W_FE_L1_O1jun15_1750...</a>	23-Jan-02 12:31	2k	
<a href="#">W_FE_L1_O1jun15_1750...</a>	23-Jan-02 12:31	13k	
<a href="#">W_FE_L1_O1jun15_1750...</a>	22-Jan-02 19:21	2k	
<a href="#">W_FE_L1_O1jun15_1750...</a>	23-Jan-02 12:31	2k	
<a href="#">W_HV.txt</a>	23-Jan-02 12:32	2k	
<a href="#">W_HV_L1_O1jun15_1825...</a>	23-Jan-02 12:32	2k	
<a href="#">W_HV_L1_O1jun15_1825...</a>	23-Jan-02 12:32	12k	
<a href="#">W_HV_L1_O1jun15_1825...</a>	22-Jan-02 19:25	2k	
<a href="#">W_HV_L1_O1jun15_1825...</a>	23-Jan-02 12:32	2k	



# Summary of wires positions



# Text data for analysis

The screenshot shows a Microsoft Internet Explorer window displaying a text file. The address bar shows the URL: [http://www.pd.infn.it/dbcms/db/MB3\\_001/SL\\_ph1\\_003/w\\_summary.txt](http://www.pd.infn.it/dbcms/db/MB3_001/SL_ph1_003/w_summary.txt). The browser's Favorites pane is open on the left, showing a list of links. The main content area displays the following text data:

L1	Mean	FE	0.219	RMS	0.043	Mean	HV	0.168	RMS	0.049
L2	Mean	FE	0.241	RMS	0.049	Mean	HV	0.254	RMS	0.073
L3	Mean	FE	0.237	RMS	0.039	Mean	HV	0.200	RMS	0.038
L4	Mean	FE	0.263	RMS	0.035	Mean	HV	0.128	RMS	0.045

The status bar at the bottom of the browser window shows "Done" and "Internet".

# Front End Boards Page

Index of /dbcms/db/FEB - Microsoft Internet Explorer

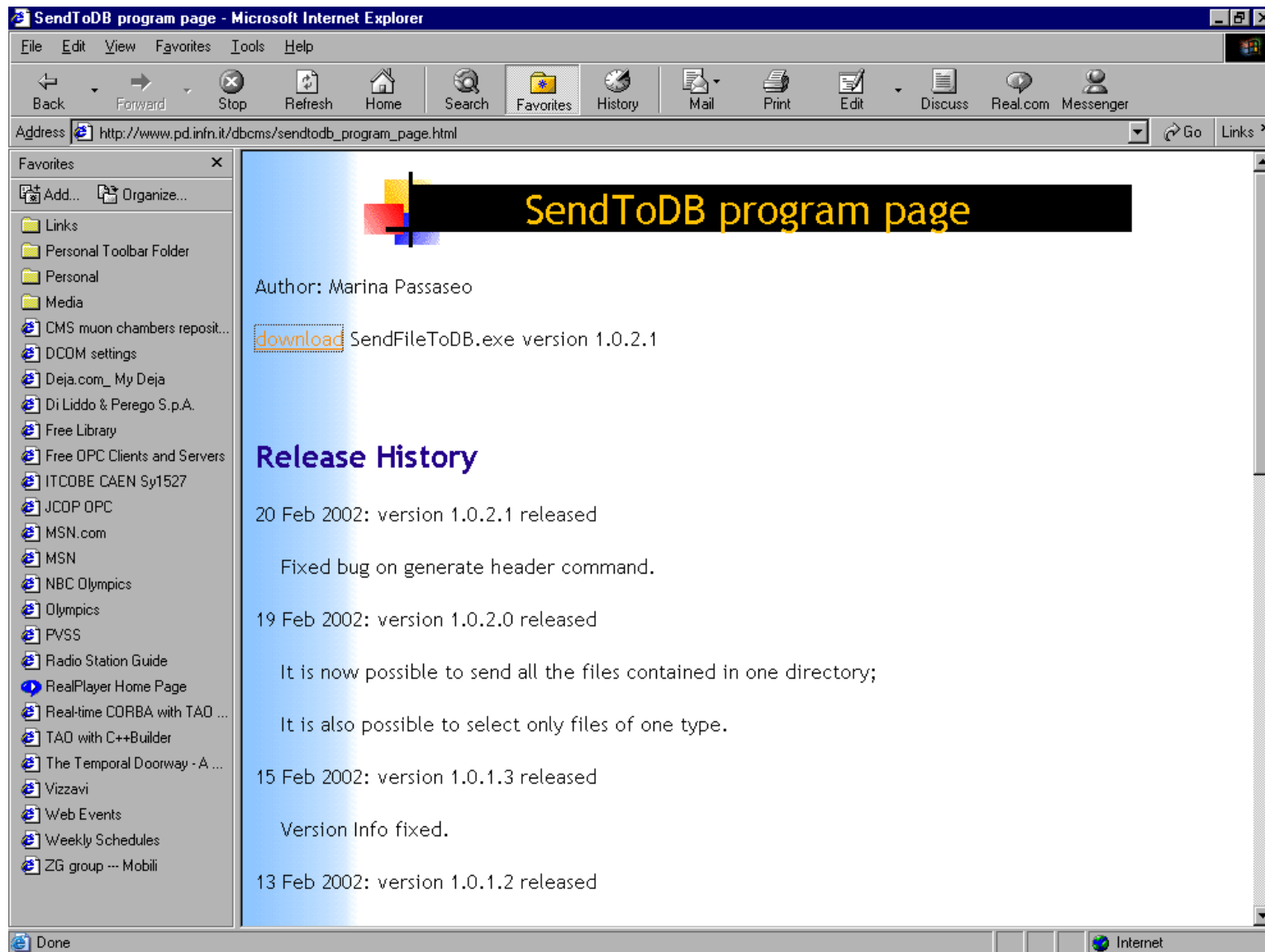
Address: <http://www.pd.infn.it/dbcms/db/FEB/>

## Index of /dbcms/db/FEB

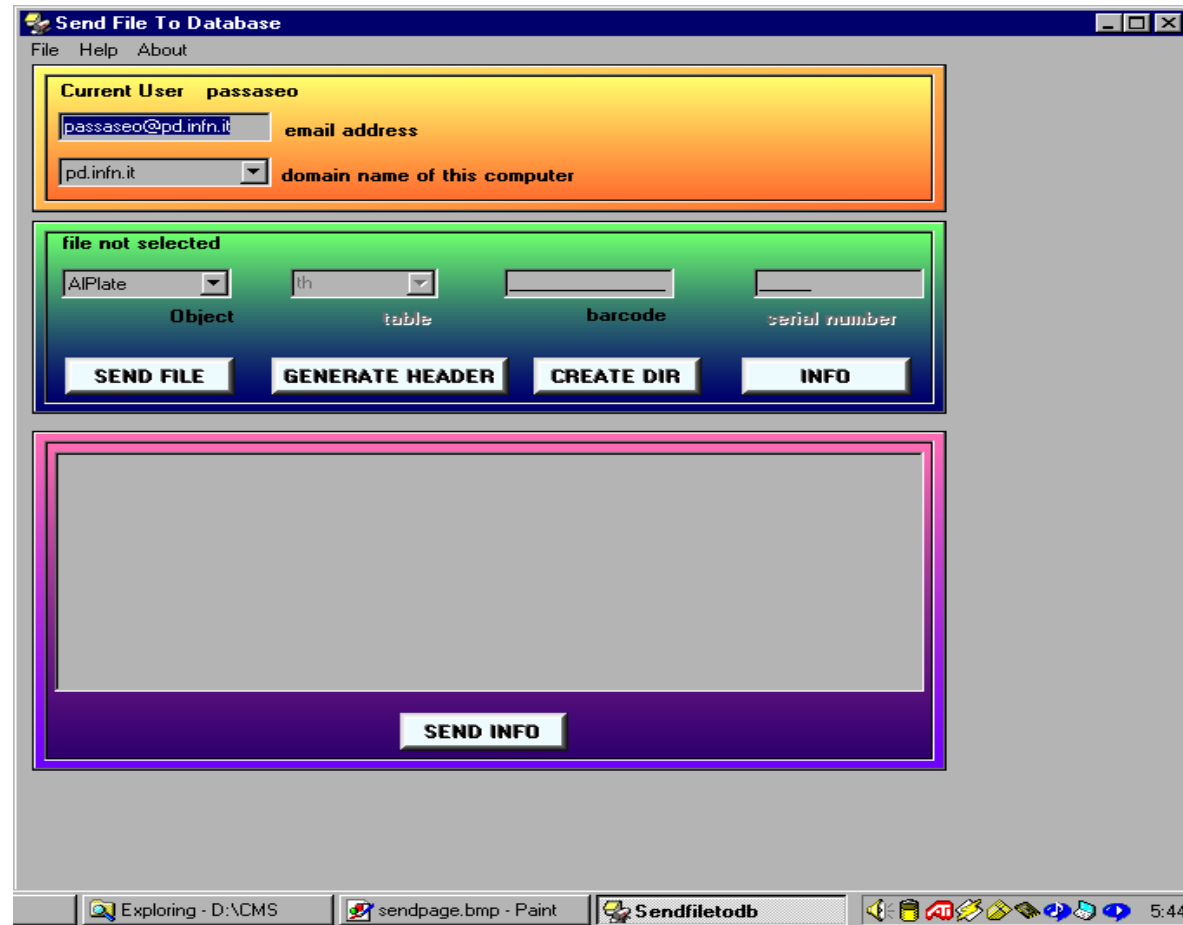
Name	Last modified	Size	Description
<a href="#">Parent Directory</a>	28-Feb-02 15:36	-	
<a href="#">FEB_3295100001.txt</a>	21-Jan-02 15:03	1k	
<a href="#">FEB_3295100002.txt</a>	21-Jan-02 15:03	1k	
<a href="#">FEB_3295100003.txt</a>	21-Jan-02 15:03	1k	
<a href="#">FEB_3295100004.txt</a>	21-Jan-02 15:03	1k	
<a href="#">FEB_3295100005.txt</a>	21-Jan-02 15:03	1k	
<a href="#">FEB_3295100006.txt</a>	21-Jan-02 15:03	1k	
<a href="#">FEB_3295100007.txt</a>	21-Jan-02 15:04	1k	
<a href="#">FEB_3295100008.txt</a>	21-Jan-02 15:04	1k	
<a href="#">FEB_3295100009.txt</a>	21-Jan-02 15:03	1k	
<a href="#">FEB_3295100010.txt</a>	21-Jan-02 15:04	1k	
<a href="#">FEB_3295100011.txt</a>	21-Jan-02 15:03	1k	
<a href="#">FEB_3295100012.txt</a>	21-Jan-02 15:03	1k	
<a href="#">FEB_3295100013.txt</a>	21-Jan-02 15:03	1k	
<a href="#">FEB_3295100014.txt</a>	21-Jan-02 15:03	1k	
<a href="#">FEB_3295100015.txt</a>	21-Jan-02 15:03	1k	
<a href="#">FEB_3295100016.txt</a>	21-Jan-02 15:03	1k	
<a href="#">FEB_3295100017.txt</a>	21-Jan-02 15:04	1k	
<a href="#">FEB_3295100018.txt</a>	21-Jan-02 15:03	1k	

Done Internet

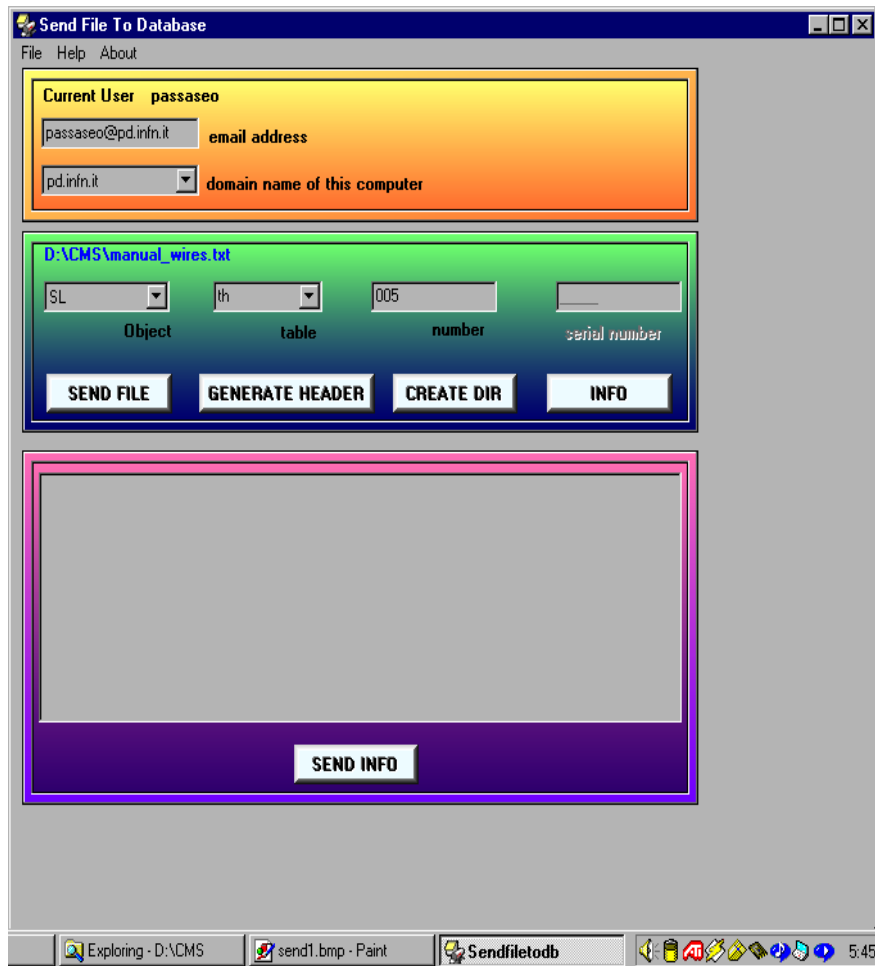
# SendToDB page



# SendToDB screenshot



# SendToDB screenshot



# SendToDB screenshot

